

TRPM5 antibody

Cat. No. GTX54864

宿主	Rabbit
克隆	Polyclonal
同种型	IgG
实验应用	WB, IHC-P
种属反应	Human, Mouse, Rat

引用文献 (1)

实验应用

应用说明

*最佳稀释倍数与浓度应由研究人员确认

Suggested dilution	Recommended dilution
WB	Assay dependent
IHC-P	Assay dependent

以下为常规应用缩写的中文注解

WB: 免疫印迹

ICC/IF: 细胞染色

IHC-P: 石蜡切片

IHC-Fr: 冰冻切片

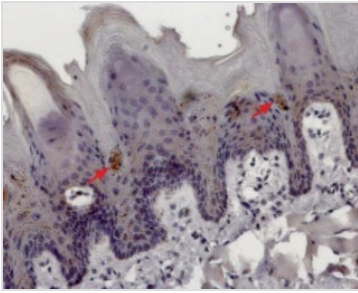
属性

形式	Liquid
存储溶液	PBS, 1% BSA
保存剂	0.05% Sodium azide
存放说明	Store as concentrated solution. Centrifuge briefly prior to opening vial. For short-term storage (1-2 weeks), store at 4°C. For long-term storage, aliquot and store at -20°C or below. Avoid multiple freeze-thaw cycles.
浓度	0.8 mg/ml (Please refer to the vial label for the specific concentration.)
偶联	Unconjugated
RRID	AB_2887901
注意事项	仅供实验室使用。不适用于人类或动物的任何临床, 治疗或诊断用途。不适合动物或人类食用。

For full product information, images and publications, please visit our [website](#).

Date 2025 / 07 / 02 Page 1 of 2

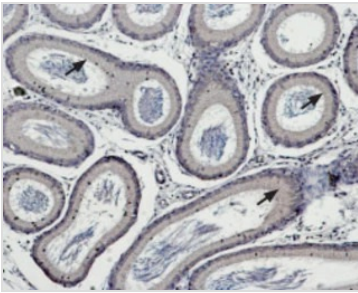
產品圖片



GTX54864 IHC-P Image

IHC-P analysis of rat tongue tissue using GTX54864 TRPM5 antibody. TRPM5 is expressed in discrete groups of cells deep in the sulcus of the papillae. Hematoxylin is used as the counterstain.

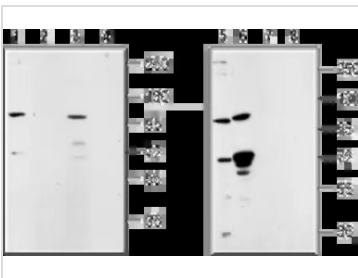
Dilution : 1:100



GTX54864 IHC-P Image

IHC-P analysis of rat testes tissue using GTX54864 TRPM5 antibody. TRPM5 is expressed in principal cells within the epididymal epithelium (arrows). Hematoxylin is used as the counterstain.

Dilution : 1:100



GTX54864 WB Image

WB analysis of rat lung membrane (lanes 1 and 2), rat testes (lanes 3 and 4), mouse ms1 cells (lanes 5 and 7), and LNCaP cell (lanes 6 and 8) lysates using GTX54864 TRPM5 antibody preincubated with or without immunogen peptide.

Dilution : 1:200



For full product information, images and publications, please visit our [website](https://www.genetex.com).