

SORD antibody [AT10F4]

Cat. No. GTX57595

宿主	Mouse
克隆	Monoclonal
同种型	IgG1
实验应用	WB, ICC/IF
种属反应	Human

实验应用

应用说明

*最佳稀释倍数与浓度应由研究人员确认

Suggested dilution	Recommended dilution
WB	Recommended starting dilution is 1:1000.
ICC/IF	Assay dependent

以下为常规应用缩写的中文注解

WB: 免疫印迹

ICC/IF: 细胞染色

IHC-P: 石蜡切片

IHC-Fr: 冰冻切片

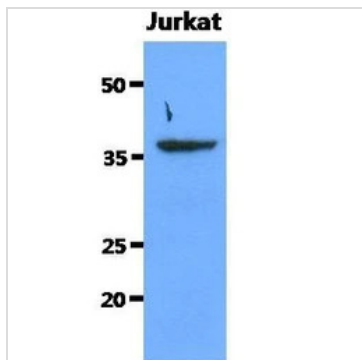
属性

形式	Liquid
存储溶液	PBS, 10% Glycerol
保存剂	0.02% Sodium azide
存放说明	Store as concentrated solution. Centrifuge briefly prior to opening vial. For short-term storage (1-2 weeks), store at 4°C. For long-term storage, aliquot and store at -20°C or below. Avoid multiple freeze-thaw cycles.
浓度	1 mg/ml (Please refer to the vial label for the specific concentration.)
偶联	Unconjugated
注意事项	仅供实验室使用。不适用于人类或动物的任何临床、治疗或诊断用途。不适合动物或人类食用。



For full product information, images and publications, please visit our [website](#).

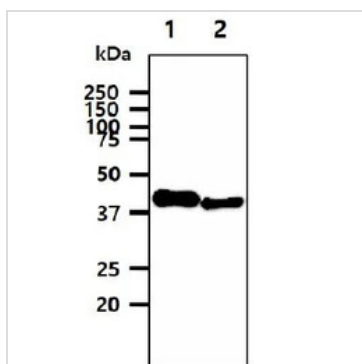
產品圖片

**GTX57595 WB Image**

WB analysis of Jurkat whole cell lysate using GTX57595 SORD antibody.

Loading : 40 μ g

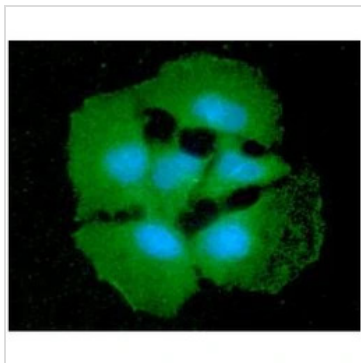
Dilution : 1:1000

**GTX57595 WB Image**

WB analysis of various samples using GTX57595 SORD antibody.

Lane 1 : Recombinant Human SORD protein (20 ng)

Lane 2 : HeLa whole cell lysate (40 μ g)

**GTX57595 ICC/IF Image**

ICC/IF analysis of Hep3B cells using GTX57595 SORD antibody.

Blue: DAPI

Green: Primary antibody

Dilution: 1:100



For full product information, images and publications, please visit our [website](#).