

## Argonautes antibody [GT9003]

Cat. No. GTX60370

宿主	Mouse
克隆	Monoclonal
同种型	IgG1
实验应用	WB, ICC/IF, IP, IHC, RIP
种属反应	Human, Mouse

引用文献 (1)

## 实验应用

## 应用说明

\*最佳稀释倍数与浓度应由研究人员确认

Suggested dilution	Recommended dilution
WB	1:500
ICC/IF	1:500
IP	8 µg per IP
IHC	1:500
RIP	Assay dependent

以下为常规应用缩写的中文注解

WB: 免疫印迹

ICC/IF: 细胞染色

IHC-P: 石蜡切片

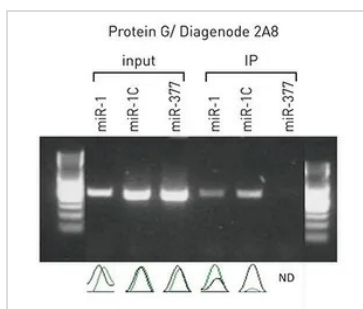
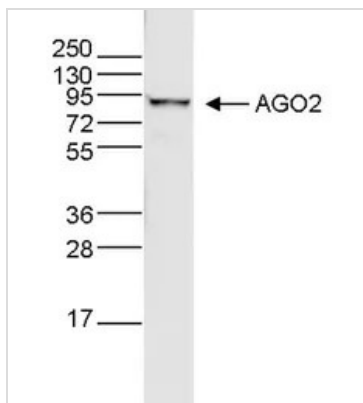
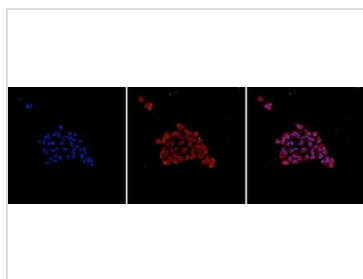
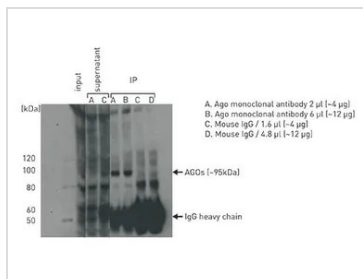
IHC-Fr: 冰冻切片

## 属性

形式	Liquid
存储溶液	PBS
保存剂	0.05% Sodium azide
存放说明	Store as concentrated solution. Centrifuge briefly prior to opening vial. For short-term storage (1-2 weeks), store at 4°C. For long-term storage, aliquot and store at -20°C or below. Avoid multiple freeze-thaw cycles.
浓度	2.4 mg/ml (Please refer to the vial label for the specific concentration.)
偶联	Unconjugated
RRID	AB_2887962
注意事项	仅供实验室使用。不适用于人类或动物的任何临床、治疗或诊断用途。不适合动物或人类食用。

For full product information, images and publications, please visit our [website](#).

產品圖片



For full product information, images and publications, please visit our [website](#).