

Histone H3R17me2K18ac (Asymmetric Di-methyl Arg17/Acetyl Lys18) antibody - CHIP grade

Cat. No. GTX60825

宿主	Rabbit
克隆	Polyclonal
同种型	IgG
实验应用	WB, ICC/IF, Dot, ELISA, ChIP assay
种属反应	Human, Mouse

实验应用

应用说明

*最佳稀释倍数与浓度应由研究人员确认

Suggested dilution	Recommended dilution
WB	1:1,000
ICC/IF	1:500
Dot	1:20,000
ELISA	1:1,000
ChIP assay	1-5 µg

以下为常规应用缩写的中文注解

WB: 免疫印迹

ICC/IF: 细胞染色

IHC-P: 石蜡切片

IHC-Fr: 冰冻切片

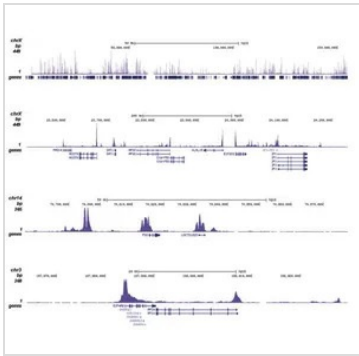
属性

形式	Liquid
存储溶液	PBS
保存剂	0.05% Sodium azide, 0.05% ProClin 300
存放说明	Store as concentrated solution. Centrifuge briefly prior to opening vial. For short-term storage (1-2 weeks), store at 4°C. For long-term storage, aliquot and store at -20°C or below. Avoid multiple freeze-thaw cycles.
浓度	0.94 mg/ml (Please refer to the vial label for the specific concentration.)
偶联	Unconjugated
注意事项	仅供实验室使用。不适用于人类或动物的任何临床、治疗或诊断用途。不适合动物或人类食用。



For full product information, images and publications, please visit our [website](#).

產品圖片



GTX60825 ChIP assay Image

ChIP analysis of HeLa cells using GTX60825 Histone H3R17me2K18ac (Asymmetric Di-methyl Arg17/Acetyl Lys18) antibody - ChIP grade. The IP'd DNA was subsequently analysed on an Illumina Genome Analyzer. Library preparation, cluster generation and sequencing were performed according to the manufacturer's instructions. The 36 bp tags were aligned to the human genome using the ELAND algorithm. Figure 2 shows the peak distribution along the complete human X-chromosome and a zoomin to a 500 kb region (figure 2A and B), and in two regions on chromosome 14 and 3 surrounding the c-fos and EIF4A2 positive control genes (figure 2C and D, respectively).

Antibody amount : 1µg



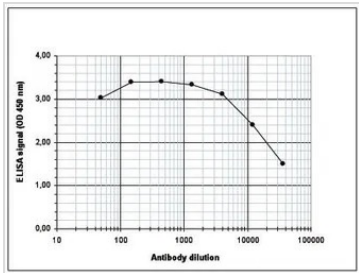
GTX60825 ICC/IF Image

ICC/IF analysis of 4% paraformaldehyde fixed NIH3T3 cells using GTX60825 Histone H3R17me2K18ac (Asymmetric Di-methyl Arg17/Acetyl Lys18) antibody - ChIP grade.

Green : Primary antibody

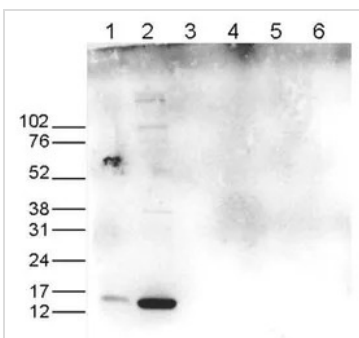
Blue : DAPI

Dilution : 1:500



GTX60825 ELISA Image

ELISA analysis of peptide containing the histone modification of interest using GTX60825 Histone H3R17me2K18ac (Asymmetric Di-methyl Arg17/Acetyl Lys18) antibody - ChIP grade.



GTX60825 WB Image

WB analysis of whole cell (25 µg, lane 1) and histone extracts (15 µg, lane 2) from HeLa cells, and on 1 µg of recombinant histone H2A, H2B, H3 and H4 (lane 3, 4, 5 and 6, respectively) using GTX60825 Histone H3R17me2K18ac (Asymmetric Di-methyl Arg17/Acetyl Lys18) antibody - ChIP grade.

Dilution : 1:1,000



For full product information, images and publications, please visit our [website](#).