

## Histone H3K79me3 (Tri-methyl Lys79) antibody [RM157]

Cat. No. GTX60884

|      |                |
|------|----------------|
| 宿主   | Rabbit         |
| 克隆   | Monoclonal     |
| 同种型  | IgG            |
| 实验应用 | WB, Dot, ELISA |
| 种属反应 | Human          |

## 实验应用

## 应用说明

\*最佳稀释倍数与浓度应由研究人员确认

| Suggested dilution | Recommended dilution  |
|--------------------|-----------------------|
| WB                 | 0.2 µg/mL - 1 µg/mL   |
| Dot                | Assay dependent       |
| ELISA              | 0.1 µg/mL - 0.5 µg/mL |

以下为常规应用缩写的中文注解

WB: 免疫印迹

ICC/IF: 细胞染色

IHC-P: 石蜡切片

IHC-Fr: 冰冻切片

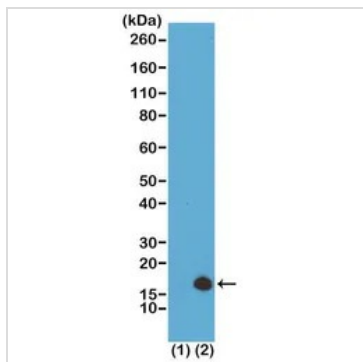
## 属性

|      |  |
|------|--|
| 形式   | Liquid   |
| 存储溶液 | PBS, 1% BSA, 50% Glycerol  |
| 保存剂  | 0.09% Sodium azide   |
| 存放说明 | Store as concentrated solution. Centrifuge briefly prior to opening vial. For short-term storage (1-2 weeks), store at 4°C. For long-term storage, aliquot and store at -20°C or below. Avoid multiple freeze-thaw cycles. |
| 浓度   | Batch dependent (Please refer to the vial label for the specific concentration.)   |
| 偶联   | Unconjugated   |
| 注意事项 | 仅供实验室使用。不适用于人类或动物的任何临床、治疗或诊断用途。不适合动物或人类食用。   |



For full product information, images and publications, please visit our [website](#).

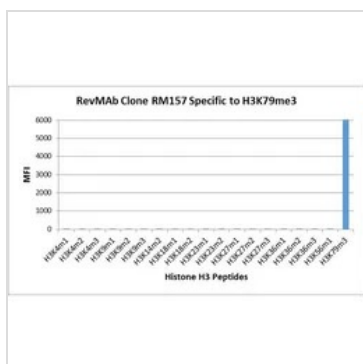
產品圖片



**GTX60884 WB Image**

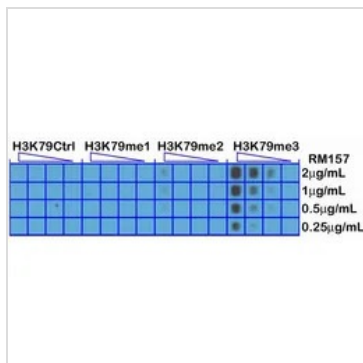
WB analysis of recombinant histone H3.3 (1) and acid extracts of HeLa cells (2) using GTX60884 Histone H3K79me3 (Tri-methyl Lys79) antibody [RM157].

Dilution : 0.5µg/ml



**GTX60884 Image**

The GTX60884 reacts to Histone H3 trimethylated at Lysine 79 (K79me3). No cross reactivity with other methylated lysines in Histone H3.



**GTX60884 Dot Image**

Dot blot analysis of various peptides using GTX60884 Histone H3K79me3 (Tri-methyl Lys79) antibody [RM157]. No cross reactivity with nonmodified Lysine 79 (H3K79Ctrl), monomethylated. Lysine 79 (K79me1), or dimethylated Lysine 79 (K79me2).



For full product information, images and publications, please visit our [website](#).