

## SOX2 antibody [GT1352]

Cat. No. GTX627405

宿主	Mouse
克隆	Monoclonal
同种型	IgG2a
实验应用	WB, ICC/IF, IHC-P, IHC-Fr, FCM
种属反应	Human, Mouse

引用文献 ( 6 )



产品评论 ( 1 )

## 实验应用

## 应用说明

\*最佳稀释倍数与浓度应由研究人员确认

Suggested dilution	Recommended dilution
WB	1:500-1:3000
ICC/IF	1:100-1:1000
IHC-P	1:100-1:1000
IHC-Fr	1:100-1:1000
FCM	1:50-1:200

以下为常规应用缩写的中文注解

WB: 免疫印迹

ICC/IF: 细胞染色

IHC-P: 石蜡切片

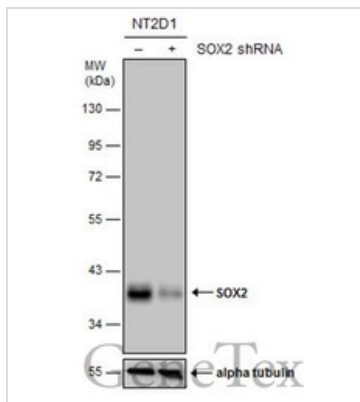
IHC-Fr: 冰冻切片

## 属性

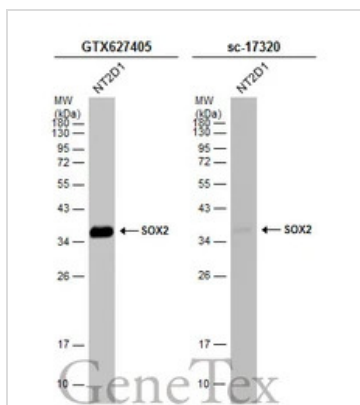
形式	Liquid
存储溶液	PBS, 20% Glycerol
保存剂	No preservatives
存放说明	Store as concentrated solution. Centrifuge briefly prior to opening vial. For short-term storage (1-2 weeks), store at 4°C. For long-term storage, aliquot and store at -20°C or below. Avoid multiple freeze-thaw cycles.
浓度	1 mg/ml (Please refer to the vial label for the specific concentration.)
偶联	Unconjugated
RRID	AB_11165499
注意事项	仅供实验室使用。不适用于人类或动物的任何临床、治疗或诊断用途。不适合动物或人类食用。

For full product information, images and publications, please visit our [website](#).

## 產品圖片

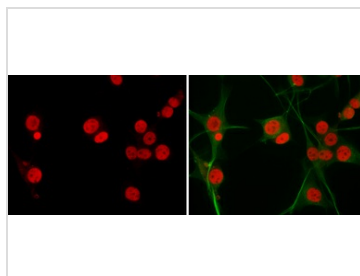
**GTX627405 WB Image**

Non-transfected (–) and transfected (+) NT2D1 whole cell extracts (30 µg) were separated by 10% SDS-PAGE, and the membrane was blotted with SOX2 antibody [GT1352] (GTX627405) diluted at 1:500. The HRP-conjugated anti-mouse IgG antibody (GTX213111-01) was used to detect the primary antibody.

**GTX627405 WB Image**

Whole cell extract (30 µg) was separated by 12% SDS-PAGE, and the membranes were blotted with SOX2 antibody [GT1352] (GTX627405) diluted at 1:1000 and competitor's antibody (sc-17320) diluted at 1:500. The HRP-conjugated anti-mouse IgG antibody (GTX213111-01) was used to detect the primary antibody, and the signal was developed with Trident ECL plus-Enhanced.

\*The competitor is not affiliated with GeneTex and does not endorse this product.

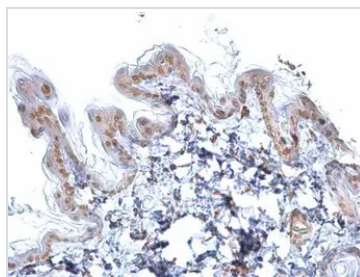
**GTX627405 ICC/IF Image**

SOX2 antibody detects SOX2 protein at nucleus by immunofluorescent analysis.

Sample: U-87 MG cells were fixed in 4% paraformaldehyde at RT for 15 min.

Red: SOX2 protein stained by SOX2 antibody (GTX627405) diluted at 1:200.

Green: beta Tubulin 3/ TUJ1 protein stained by beta Tubulin 3/ TUJ1 antibody (GTX631836) diluted at 1:200.

**GTX627405 IHC-P Image**

SOX2 antibody [GT1352] detects SOX2 protein at nucleus on by immunohistochemical analysis.

Sample: Paraffin-embedded mouse skin.

SOX2 antibody [GT1352] (GTX627405) dilution: 1:500.

Antigen Retrieval: Trilogy™ (EDTA based, pH 8.0) buffer, 15min



For full product information, images and publications, please visit our [website](https://www.genetex.com).