

alpha Tubulin antibody [GT114]

Cat. No. GTX628802

宿主	Mouse
克隆	Monoclonal
同种型	IgG2a
实验应用	WB, ICC/IF, IHC-P, IHC-Fr, FCM
种属反应	Human, Mouse, Rat, Zebrafish, Goat, Drosophila, Crucian carp

引用文献 (196)

★★★★☆ 产品评论 (2)

产品说明

摘要

alpha Tubulin antibody [GT114] detects alpha Tubulin, a cytoskeletal protein widely expressed in cells that is commonly used as a loading control for western blots. The predicted molecular weight of alpha Tubulin protein is 50 kDa. This is a well-cited mouse monoclonal antibody validated for multiple applications including western blot, immunohistochemistry, and immunocytochemistry.

实验应用

应用说明

*最佳稀释倍数与浓度应由研究人员确认

Suggested dilution	Recommended dilution
WB	1:500-1:20000
ICC/IF	1:100-1:1000
IHC-P	1:100-1:1000
IHC-Fr	1:100-1:1000
FCM	Assay dependent

以下为常规应用缩写的中文注解

WB: 免疫印迹

ICC/IF: 细胞染色

IHC-P: 石蜡切片

IHC-Fr: 冰冻切片

属性

形式	Liquid
存储溶液	PBS, 20% Glycerol
保存剂	No preservatives
存放说明	Store as concentrated solution. Centrifuge briefly prior to opening vial. For short-term storage (1-2 weeks), store at 4°C. For long-term storage, aliquot and store at -20°C or below. Avoid multiple freeze-thaw cycles.
浓度	1 mg/ml (Please refer to the vial label for the specific concentration.)
偶联	Unconjugated

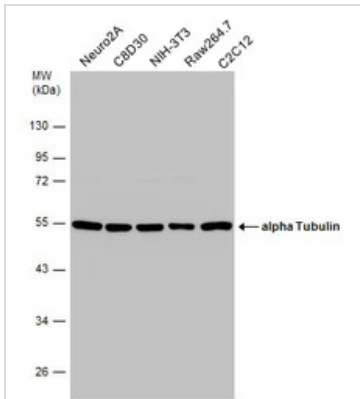


For full product information, images and publications, please visit our [website](#).

RRID AB_2716636

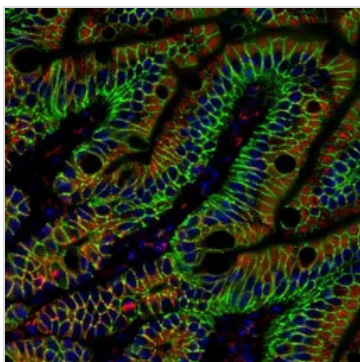
注意事项 仅供实验室使用。不适用于人类或动物的任何临床，治疗或诊断用途。不适合动物或人类食用。

產品图片



GTX628802 WB Image

Various whole cell extracts (30 μ g) were separated by 10% SDS-PAGE, and the membrane was blotted with alpha Tubulin antibody [GT114] (GTX628802) diluted at 1:10000. The HRP-conjugated anti-mouse IgG antibody (GTX213111-01) was used to detect the primary antibody.



GTX628802 IHC-P Image

alpha Tubulin antibody [GT114] detects alpha Tubulin protein at cytoplasm in mouse colon by immunohistochemical analysis.

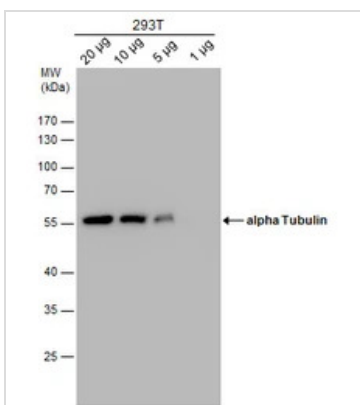
Sample: Paraffin-embedded mouse colon.

Red: alpha Tubulin antibody [GT114] (GTX628802) diluted at 1:500.

Green: beta Catenin antibody [N1N2-2] (GTX101435) diluted at 1:500.

Blue: Hoechst 33342 staining.

Antigen Retrieval: Trilogy™ (EDTA based, pH 8.0) buffer, 15min



GTX628802 WB Image

alpha Tubulin antibody detects alpha Tubulin protein by western blot analysis. Varied amount of 293T Whole cell extracts was separated by 10% SDS-PAGE, and the membrane was blotted with alpha Tubulin antibody (GTX628802) at a dilution of 1:10000. The HRP-conjugated anti-mouse IgG antibody (GTX213111-01) was used to detect the primary antibody.



For full product information, images and publications, please visit our [website](#).