

SAMHD1 antibody [GT954]

Cat. No. GTX628891

宿主	Mouse
克隆	Monoclonal
同种型	IgG1
实验应用	WB, IHC-P
种属反应	Human

实验应用

应用说明

*最佳稀释倍数与浓度应由研究人员确认

Suggested dilution	Recommended dilution
WB	1:500-1:3000
IHC-P	1:100-1:1000

以下为常规应用缩写的中文注解

WB: 免疫印迹

ICC/IF: 细胞染色

IHC-P: 石蜡切片

IHC-Fr: 冰冻切片

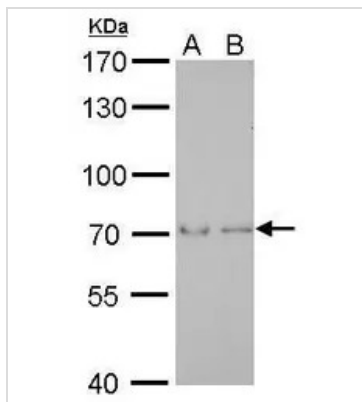
属性

形式	Liquid
存储溶液	PBS
保存剂	No preservatives
存放说明	Store as concentrated solution. Centrifuge briefly prior to opening vial. For short-term storage (1-2 weeks), store at 4°C. For long-term storage, aliquot and store at -20°C or below. Avoid multiple freeze-thaw cycles.
浓度	1 mg/ml (Please refer to the vial label for the specific concentration.)
偶联	Unconjugated
RRID	AB_2888068
注意事项	仅供实验室使用。不适用于人类或动物的任何临床, 治疗或诊断用途。不适合动物或人类食用。



For full product information, images and publications, please visit our [website](#).

產品圖片

**GTX628891 WB Image**

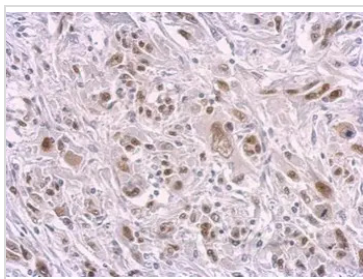
SAMHD1 antibody [GT954] detects SAMHD1 protein by Western blot analysis.

A. 30 µg THP-1 whole cell lysate/extract

B. 30 µg NCI-H929 whole cell lysate/extract

7.5 % SDS-PAGE

SAMHD1 antibody [GT954] (GTX628891) dilution: 1:1000

**GTX628891 IHC-P Image**

SAMHD1 antibody [GT954] detects SAMHD1 protein at nucleus on U251 xenograft by immunohistochemical analysis.

Sample: Paraffin-embedded U251 xenograft.

SAMHD1 antibody [GT954] (GTX628891) dilution: 1:200.

Antigen Retrieval: Trilogy™ (EDTA based, pH 8.0) buffer, 15min



For full product information, images and publications, please visit our [website](#).