

beta Actin antibody [GT5512]

Cat. No. GTX629630

宿主	Mouse
克隆	Monoclonal
同种型	IgG1
实验应用	WB, ICC/IF, IHC-P, IP
种属反应	Human, Mouse, Rat, Zebrafish, Yeast, Rabbit, Goat, Drosophila, Cat, Dog, Monkey, Xenopus

引用文献 (177)

★★★★★ 产品评论 (9)

实验应用

应用说明

*最佳稀释倍数与浓度应由研究人员确认

Suggested dilution	Recommended dilution
WB	1:500-1:20000
ICC/IF	1:100-1:1000
IHC-P	1:100-1:1000
IP	Assay dependent

以下为常规应用缩写的中文注解

WB: 免疫印迹

ICC/IF: 细胞染色

IHC-P: 石蜡切片

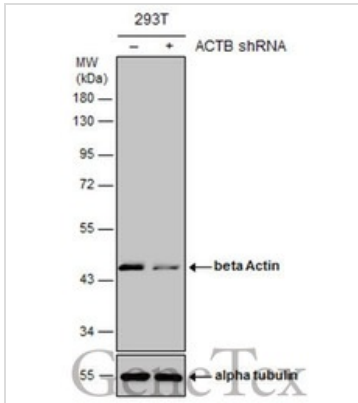
IHC-Fr: 冰冻切片

属性

形式	Liquid
存储溶液	PBS
保存剂	No preservative
存放说明	Store as concentrated solution. Centrifuge briefly prior to opening vial. For short-term storage (1-2 weeks), store at 4°C. For long-term storage, aliquot and store at -20°C or below. Avoid multiple freeze-thaw cycles.
浓度	1 mg/ml (Please refer to the vial label for the specific concentration.)
偶联	Unconjugated
RRID	AB_2728646
注意事项	仅供实验室使用。不适用于人类或动物的任何临床、治疗或诊断用途。不适合动物或人类食用。

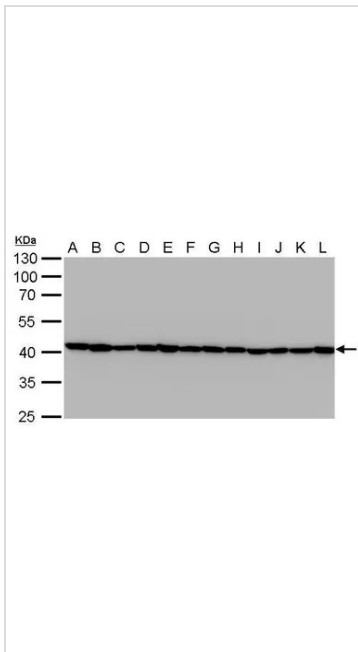
For full product information, images and publications, please visit our [website](#).

產品圖片



GTX629630 WB Image

Non-transfected (–) and transfected (+) 293T whole cell extracts (10 µg) were separated by 10% SDS-PAGE, and the membrane was blotted with beta Actin antibody [GT5512] (GTX629630) diluted at 1:20000. The HRP-conjugated anti-mouse IgG antibody (GTX213111-01) was used to detect the primary antibody.



GTX629630 WB Image

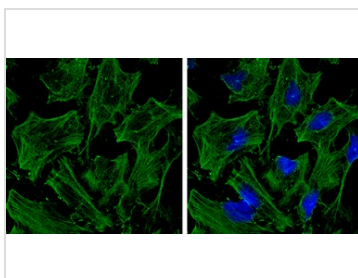
Beta Actin antibody [GT5512] detects beta Actin protein by western blot analysis.

- A. 30 µg Jurkat whole cell lysate/extract
- B. 30 µg Raji whole cell lysate/extract
- C. 30 µg 293T whole cell lysate/extract
- D. 30 µg A431 whole cell lysate/extract
- E. 30 µg HeLa whole cell lysate/extract
- F. 30 µg HepG2 whole cell lysate/extract
- G. 30 µg H1299 whole cell lysate/extract
- H. 30 µg HCT116 whole cell lysate/extract
- I. 30 µg MCF-7 whole cell lysate/extract
- J. 30 µg NT2D1 whole cell lysate/extract
- K. 30 µg PC-3 whole cell lysate/extract
- L. 30 µg U87-MG whole cell lysate/extract

10% SDS-PAGE

Beta Actin antibody [GT5512] (GTX629630) dilution: 1:20000

The HRP-conjugated anti-mouse IgG antibody (GTX213111-01) was used to detect the primary antibody.



GTX629630 ICC/IF Image

beta Actin antibody [GT5512] detects beta Actin protein at cytoskeleton by immunofluorescent analysis.

Sample: HeLa cells were fixed in 0.5% Triton X-100 for 1 min, then ice-cold methanol for 5 min.

Green: beta Actin protein stained by beta Actin antibody [GT5512] (GTX629630) diluted at 1:500.

Blue: Hoechst 33342 staining.



For full product information, images and publications, please visit our [website](https://www.genetex.com).