

DCK antibody [GT7710]

Cat. No. GTX632062

宿主	Mouse
克隆	Monoclonal
同种型	IgG1
实验应用	WB, IHC-P
种属反应	Human, Mouse, Rat

引用文献 (1)

实验应用

应用说明

*最佳稀释倍数与浓度应由研究人员确认

Suggested dilution	Recommended dilution
WB	1:1000-1:10000
IHC-P	1:100-1:1000

以下为常规应用缩写的中文注解

WB: 免疫印迹

ICC/IF: 细胞染色

IHC-P: 石蜡切片

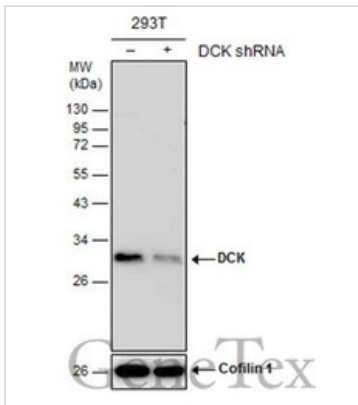
IHC-Fr: 冰冻切片

属性

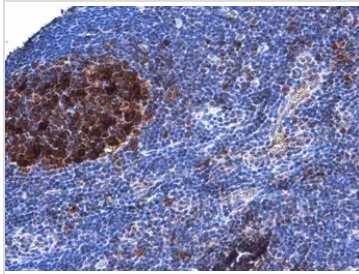
形式	Liquid
存储溶液	PBS
保存剂	No preservatives
存放说明	Store as concentrated solution. Centrifuge briefly prior to opening vial. For short-term storage (1-2 weeks), store at 4°C. For long-term storage, aliquot and store at -20°C or below. Avoid multiple freeze-thaw cycles.
浓度	1.33 mg/ml (Please refer to the vial label for the specific concentration.)
偶联	Unconjugated
RRID	AB_2888284
注意事项	仅供实验室使用。不适用于人类或动物的任何临床, 治疗或诊断用途。不适合动物或人类食用。

For full product information, images and publications, please visit our [website](#).

產品圖片

**GTX632062 WB Image**

Non-transfected (-) and transfected (+) 293T whole cell extracts (30 μ g) were separated by 12% SDS-PAGE, and the membrane was blotted with DCK antibody [GT7710] (GTX632062) diluted at 1:500.

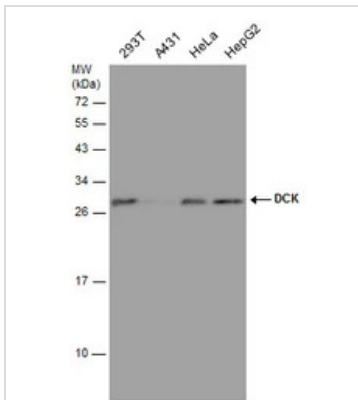
**GTX632062 IHC-P Image**

DCK antibody [GT7710] detects DCK protein at nucleus by immunohistochemical analysis.

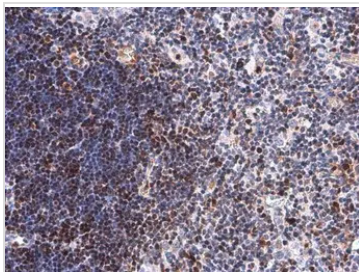
Sample: Paraffin-embedded rat lymph node.

DCK stained by DCK antibody [GT7710] (GTX632062) diluted at 1:200.

Antigen Retrieval: Citrate buffer, pH 6.0, 15 min

**GTX632062 WB Image**

Various whole cell extracts (30 μ g) were separated by 12% SDS-PAGE, and the membrane was blotted with DCK antibody [GT7710] (GTX632062) diluted at 1:500.

**GTX632062 IHC-P Image**

DCK antibody [GT7710] detects DCK protein at nucleus by immunohistochemical analysis.

Sample: Paraffin-embedded mouse thymus gland.

DCK stained by DCK antibody [GT7710] (GTX632062) diluted at 1:200.

Antigen Retrieval: Citrate buffer, pH 6.0, 15 min



For full product information, images and publications, please visit our [website](#).