

ME1 antibody [GT736]

Cat. No. GTX632188

宿主	Mouse
克隆	Monoclonal
同种型	IgG2b
实验应用	WB
种属反应	Human

★★★★★ 产品评论 (1)

实验应用

应用说明

*最佳稀释倍数与浓度应由研究人员确认

Suggested dilution	Recommended dilution
WB	1:500-1:3000

以下为常规应用缩写的中文注解

WB: 免疫印迹

ICC/IF: 细胞染色

IHC-P: 石蜡切片

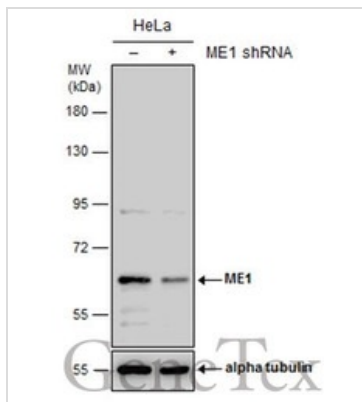
IHC-Fr: 冰冻切片

属性

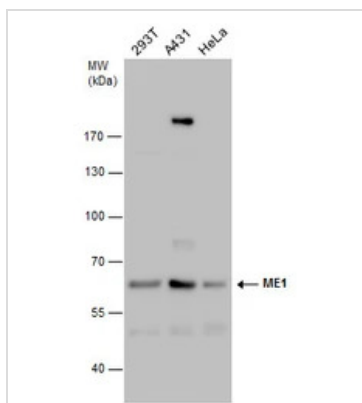
形式	Liquid
存储溶液	PBS
保存剂	No preservatives
存放说明	Store as concentrated solution. Centrifuge briefly prior to opening vial. For short-term storage (1-2 weeks), store at 4°C. For long-term storage, aliquot and store at -20°C or below. Avoid multiple freeze-thaw cycles.
浓度	2.57 mg/ml (Please refer to the vial label for the specific concentration.)
偶联	Unconjugated
RRID	AB_2888294
注意事项	仅供实验室使用。不适用于人类或动物的任何临床，治疗或诊断用途。不适合动物或人类食用。

For full product information, images and publications, please visit our [website](#).

產品圖片

**GTX632188 WB Image**

Non-transfected (-) and transfected (+) HeLa whole cell extracts (30 μ g) were separated by 7.5% SDS-PAGE, and the membrane was blotted with ME1 antibody [GT736] (GTX632188) diluted at 1:500.

**GTX632188 WB Image**

ME1 antibody [GT736] detects ME1 [GT736] protein by western blot analysis. Various whole cell extracts (30 μ g) were separated by 7.5% SDS-PAGE, and the membrane was blotted with ME1 antibody [GT736] (GTX632188) diluted at a dilution of 1:500.



For full product information, images and publications, please visit our [website](#).