

CACNB3 antibody [7D1]

Cat. No. GTX632268

宿主	Mouse
克隆	Monoclonal
同种型	IgG1
实验应用	WB, ICC/IF, FCM
种属反应	Human, Monkey

实验应用

应用说明

*最佳稀释倍数与浓度应由研究人员确认

Suggested dilution	Recommended dilution
WB	1:500-1:3000
ICC/IF	Assay dependent
FCM	Assay dependent

以下为常规应用缩写的中文注解

WB: 免疫印迹

ICC/IF: 细胞染色

IHC-P: 石蜡切片

IHC-Fr: 冰冻切片

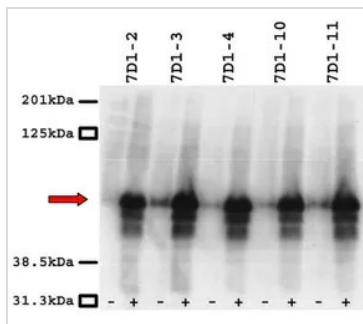
属性

形式	Liquid
存储溶液	PBS
保存剂	No preservatives
存放说明	Store as concentrated solution. Centrifuge briefly prior to opening vial. For short-term storage (1-2 weeks), store at 4°C. For long-term storage, aliquot and store at -20°C or below. Avoid multiple freeze-thaw cycles.
浓度	1.79 mg/ml (Please refer to the vial label for the specific concentration.)
偶联	Unconjugated
RRID	AB_2888303
注意事项	仅供实验室使用。不适用于人类或动物的任何临床, 治疗或诊断用途。不适合动物或人类食用。



For full product information, images and publications, please visit our [website](#).

產品圖片

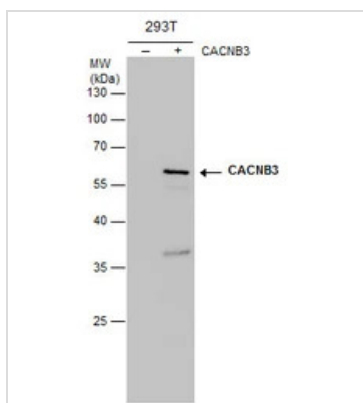


GTX632268 WB Image

WB analysis of cos1 cell transfected with CACNB3 using GTX632268 CACNB3 antibody [7D1].

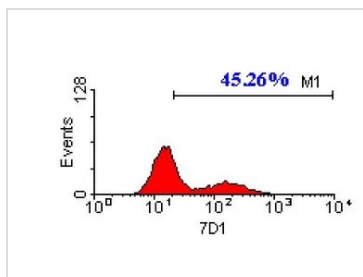
+ : Transfected

- : Endogenous



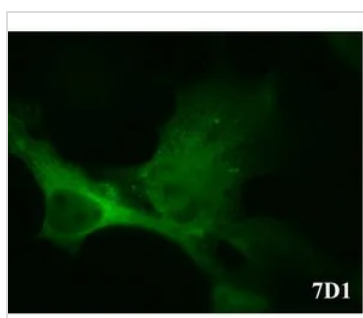
GTX632268 WB Image

CACNB3 antibody detects CACNB3 protein by western blot analysis. Non-transfected (-) and CACNB3-transfected (+) 293T whole cell extracts (30 µg) were separated by 10% SDS-PAGE, and the membrane was blotted with CACNB3 antibody (GTX632268) at a dilution of 1:1000.



GTX632268 FCM Image

FACS analysis of cos1 cells transfected with CACNB3 using GTX632268 CACNB3 antibody [7D1].



GTX632268 ICC/IF Image

ICC/IF analysis of cos-1 cells overexpressed with β3 using GTX632268 CACNB3 antibody [7D1].



For full product information, images and publications, please visit our [website](#).