

Talin-1 antibody [GT24212]

Cat. No. GTX634334

宿主	Mouse
克隆	Monoclonal
同种型	IgG1
实验应用	WB, IHC-P
种属反应	Human, Rat

实验应用

应用说明

*最佳稀释倍数与浓度应由研究人员确认

Suggested dilution	Recommended dilution
WB	1:500-1:3000
IHC-P	1:100-1:1000

以下为常规应用缩写的中文注解

WB: 免疫印迹

ICC/IF: 细胞染色

IHC-P: 石蜡切片

IHC-Fr: 冰冻切片

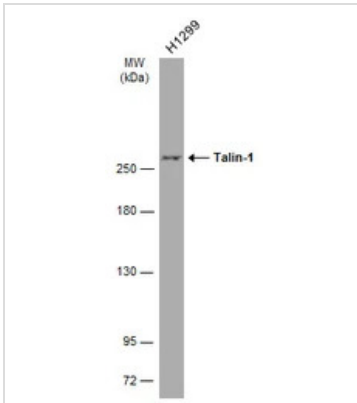
属性

形式	Liquid
存储溶液	PBS
保存剂	No preservatives
存放说明	Store as concentrated solution. Centrifuge briefly prior to opening vial. For short-term storage (1-2 weeks), store at 4°C. For long-term storage, aliquot and store at -20°C or below. Avoid multiple freeze-thaw cycles.
浓度	1 mg/ml (Please refer to the vial label for the specific concentration.)
偶联	Unconjugated
RRID	AB_2888437
注意事项	仅供实验室使用。不适用于人类或动物的任何临床, 治疗或诊断用途。不适合动物或人类食用。

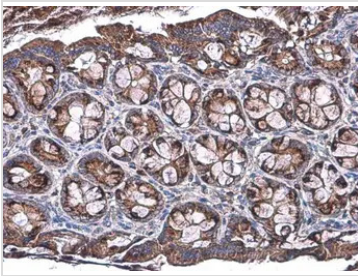


For full product information, images and publications, please visit our [website](#).

產品图片

**GTX634334 WB Image**

Whole cell extract (30 µg) was separated by 5% SDS-PAGE, and the membrane was blotted with Talin-1 antibody [GT24212] (GTX634334) diluted at 1:1000. The HRP-conjugated anti-mouse IgG antibody (GTX213111-01) was used to detect the primary antibody.

**GTX634334 IHC-P Image**

Talin-1 antibody [GT24212] detects Talin-1 protein at cytoplasm by immunohistochemical analysis.

Sample: Paraffin-embedded rat colon.

Talin-1 stained by Talin-1 antibody [GT24212] (GTX634334) diluted at 1:1000.

Antigen Retrieval: Citrate buffer, pH 6.0, 15 min



For full product information, images and publications, please visit our [website](#).