

PI3 kinase p85 alpha antibody [HL1414]

Cat. No. GTX636880

宿主	Rabbit
克隆	Monoclonal
同种型	IgG
实验应用	WB, ICC/IF, IHC-P
种属反应	Human, Mouse

实验应用

应用说明

*最佳稀释倍数与浓度应由研究人员确认

Suggested dilution	Recommended dilution
WB	1:500-1:3000
ICC/IF	Assay dependent
IHC-P	Assay dependent

以下为常规应用缩写的中文注解

WB: 免疫印迹

ICC/IF: 细胞染色

IHC-P: 石蜡切片

IHC-Fr: 冰冻切片

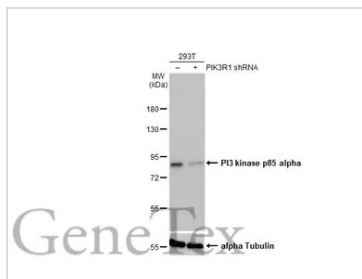
属性

形式	Liquid
存储溶液	PBS
保存剂	No preservative
存放说明	Store as concentrated solution. Centrifuge briefly prior to opening vial. For short-term storage (1-2 weeks), store at 4°C. For long-term storage, aliquot and store at -20°C or below. Avoid multiple freeze-thaw cycles.
浓度	1 mg/ml (Please refer to the vial label for the specific concentration.)
偶联	Unconjugated
注意事项	仅供实验室使用。不适用于人类或动物的任何临床、治疗或诊断用途。不适合动物或人类食用。

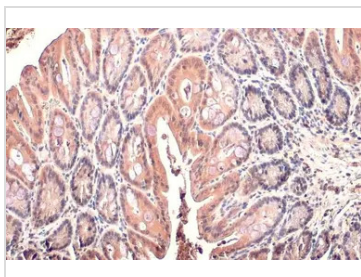


For full product information, images and publications, please visit our [website](#).

產品圖片

**GTX636880 WB Image**

Non-transfected (–) and transfected (+) 293T whole cell extracts (50 µg) were separated by 7.5% SDS-PAGE, and the membrane was blotted with PI3 kinase p85 alpha antibody [HL1414] (GTX636880) diluted at 1:3000. The HRP-conjugated anti-rabbit IgG antibody (GTX213110-01) was used to detect the primary antibody.

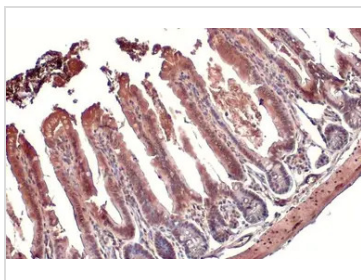
**GTX636880 IHC-P Image**

PI3 kinase p85 alpha antibody [HL1414] detects PI3 kinase p85 alpha protein at cytoplasm by immunohistochemical analysis.

Sample: Paraffin-embedded mouse colon.

PI3 kinase p85 alpha stained by PI3 kinase p85 alpha antibody [HL1414] (GTX636880) diluted at 1:100.

Antigen Retrieval: Citrate buffer, pH 6.0, 15 min

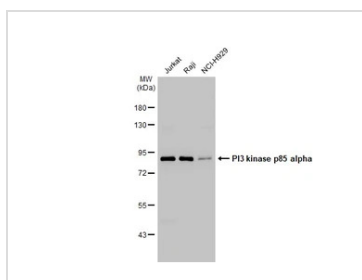
**GTX636880 IHC-P Image**

PI3 kinase p85 alpha antibody [HL1414] detects PI3 kinase p85 alpha protein at cytoplasm by immunohistochemical analysis.

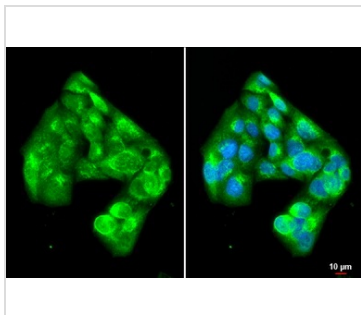
Sample: Paraffin-embedded mouse intestine.

PI3 kinase p85 alpha stained by PI3 kinase p85 alpha antibody [HL1414] (GTX636880) diluted at 1:100.

Antigen Retrieval: Citrate buffer, pH 6.0, 15 min

**GTX636880 WB Image**

Various whole cell extracts (30 µg) were separated by 7.5% SDS-PAGE, and the membrane was blotted with PI3 kinase p85 alpha antibody [HL1414] (GTX636880) diluted at 1:1000. The HRP-conjugated anti-rabbit IgG antibody (GTX213110-01) was used to detect the primary antibody.

**GTX636880 ICC/IF Image**

PI3 kinase p85 alpha antibody [HL1414] detects PI3 kinase p85 alpha protein at Golgi apparatus and cytoplasm by immunofluorescent analysis.

Sample: HepG2 cells were fixed in 4% paraformaldehyde at RT for 15 min.

Green: PI3 kinase p85 alpha stained by PI3 kinase p85 alpha antibody [HL1414] (GTX636880) diluted at 1:500.

Blue: Fluoroshield with DAPI (GTX30920).

Scale bar= 10µm.



For full product information, images and publications, please visit our [website](https://www.genetex.com).