

Enterovirus D68 VP1 antibody [HL1997]

Cat. No. GTX637898

宿主	Rabbit
克隆	Monoclonal
同种型	IgG
实验应用	WB, ICC/IF, ELISA, Lateral Flow, Sandwich ELISA
种属反应	Enterovirus D68

引用文献 (1)

实验应用

应用说明

*最佳稀释倍数与浓度应由研究人员确认

Suggested dilution	Recommended dilution
WB	1:500-1:3000
ICC/IF	Assay dependent
ELISA	Assay dependent
Lateral Flow	Assay dependent
Sandwich ELISA	Assay dependent

**Note : Capture: GTX633770, Detection: GTX637898 or Capture: GTX637898, Detection: GTX633770
Capture : GTX633688 / GTX633770, Detection : GTX637898. Please notice that GTX637898 needs to be conjugated to HRP to function as the detection antibody when paired with GTX633688 / GTX633770. Please contact us for custom HRP-conjugated antibody.**

以下为常规应用缩写的中文注解

WB: 免疫印迹

ICC/IF: 细胞染色

IHC-P: 石蜡切片

IHC-Fr: 冰冻切片

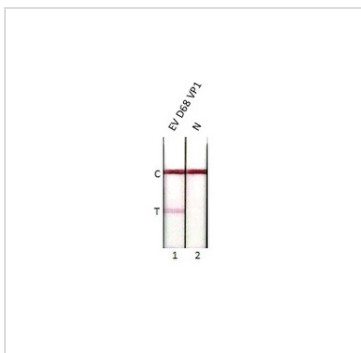
属性

形式	Liquid
存储溶液	PBS
保存剂	No preservatives
存放说明	Store as concentrated solution. Centrifuge briefly prior to opening vial. For short-term storage (1-2 weeks), store at 4°C. For long-term storage, aliquot and store at -20°C or below. Avoid multiple freeze-thaw cycles.
浓度	1 mg/ml (Please refer to the vial label for the specific concentration.)
偶联	Unconjugated
注意事项	仅供实验室使用。不适用于人类或动物的任何临床，治疗或诊断用途。不适合动物或人类食用。



For full product information, images and publications, please visit our [website](#).

產品圖片



GTX637898 Lateral Flow Image

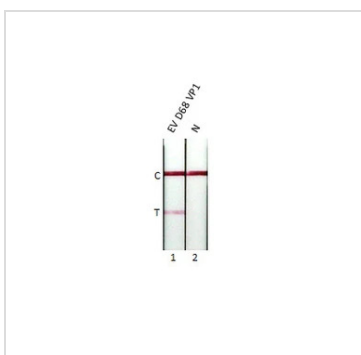
Detection of enterovirus D68 VP1 protein by lateral flow assay using the monoclonal antibody pair.

Capture: Enterovirus D68 VP1 antibody (GTX633770 [GT1843])

Detection: Enterovirus D68 VP1 antibody (GTX637898 [HL1997])

Samples (80 ng) :

1. Enterovirus D68 VP1 protein (GTX138561-pro)
2. Lysis buffer



GTX637898 Lateral Flow Image

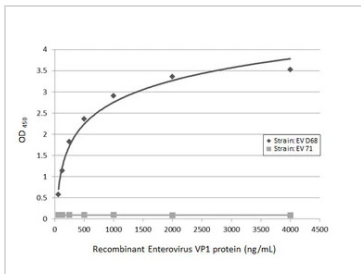
Detection of enterovirus D68 VP1 protein by lateral flow assay using the monoclonal antibody pair.

Capture: Enterovirus D68 VP1 antibody (GTX637898 [HL1997])

Detection: Enterovirus D68 VP1 antibody (GTX633770 [GT1843])

Samples (80 ng) :

1. Enterovirus D68 VP1 protein (GTX138561-pro)
2. Lysis buffer

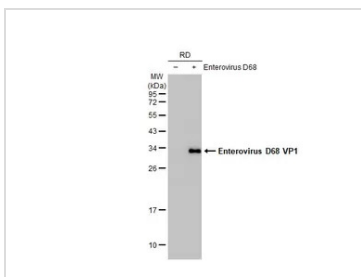


GTX637898 ELISA Image

Sandwich ELISA detection of recombinant full-length VP1 protein(s) derived from different strains of Enterovirus (ie., D68; 71) using antibodies as below.

Capture: Enterovirus D68 VP1 antibody [GT11610] (GTX633688) (5 µg/mL)

Detection: Enterovirus D68 VP1 antibody [HL1997] (GTX637898) (1 µg/mL)



GTX637898 WB Image

Non-infected (-) and infected (+) RD whole cell extracts (30 µg) were separated by 12% SDS-PAGE, and the membrane was blotted with Enterovirus D68 VP1 antibody [HL1997] (GTX637898) diluted at 1:1000. The HRP-conjugated anti-rabbit IgG antibody (GTX213110-01) was used to detect the primary antibody.



For full product information, images and publications, please visit our [website](#).