

KDM6A antibody [HL2068]

Cat. No. GTX637972

| | |
|------|-------------------|
| 宿主 | Rabbit |
| 克隆 | Monoclonal |
| 同种型 | IgG |
| 实验应用 | WB, ICC/IF, IHC-P |
| 种属反应 | Human, Mouse, Dog |

实验应用

应用说明

*最佳稀释倍数与浓度应由研究人员确认

| Suggested dilution | Recommended dilution |
|--------------------|----------------------|
| WB | 1:500-1:3000 |
| ICC/IF | Assay dependent |
| IHC-P | Assay dependent |

以下为常规应用缩写的中文注解

WB: 免疫印迹

ICC/IF: 细胞染色

IHC-P: 石蜡切片

IHC-Fr: 冰冻切片

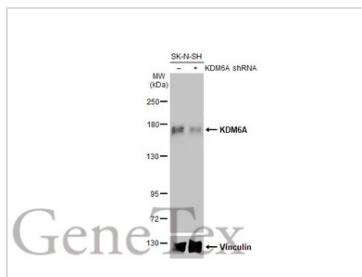
属性

| | |
|------|--|
| 形式 | Liquid |
| 存储溶液 | PBS |
| 保存剂 | No preservatives |
| 存放说明 | Store as concentrated solution. Centrifuge briefly prior to opening vial. For short-term storage (1-2 weeks), store at 4°C. For long-term storage, aliquot and store at -20°C or below. Avoid multiple freeze-thaw cycles. |
| 浓度 | 1 mg/ml (Please refer to the vial label for the specific concentration.) |
| 偶联 | Unconjugated |
| 注意事项 | 仅供实验室使用。不适用于人类或动物的任何临床, 治疗或诊断用途。不适合动物或人类食用。 |

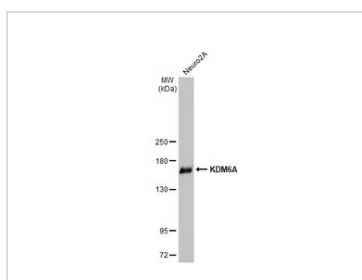


For full product information, images and publications, please visit our [website](#).

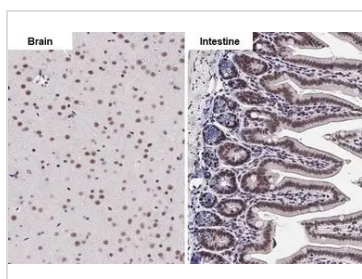
產品圖片

**GTX637972 WB Image**

Non-transfected (-) and transfected (+) SK-N-SH whole cell extracts (42 μ g) were separated by 5% SDS-PAGE, and the membrane was blotted with KDM6A antibody [HL2068] (GTX637972) diluted at 1:1000. The HRP-conjugated anti-rabbit IgG antibody (GTX213110-01) was used to detect the primary antibody.

**GTX637972 WB Image**

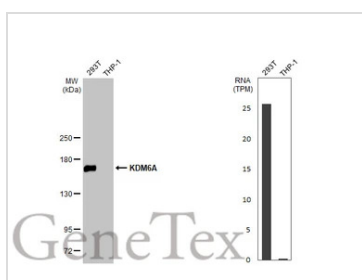
Various whole cell extracts (50 μ g) was separated by 5% SDS-PAGE, and the membrane was blotted with KDM6A antibody [HL2068] (GTX637972) diluted at 1:1000. The HRP-conjugated anti-rabbit IgG antibody (GTX213110-01) was used to detect the primary antibody.

**GTX637972 IHC-P Image**

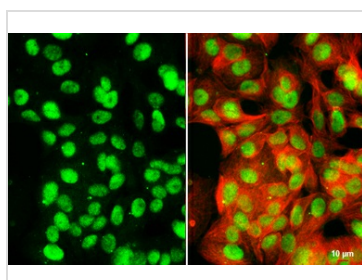
KDM6A antibody [HL2068] detects KDM6A protein at nucleus by immunohistochemical analysis. Sample: Paraffin-embedded mouse tissues.

KDM6A stained by KDM6A antibody [HL2068] (GTX637972) diluted at 1:100.

Antigen Retrieval: Citrate buffer, pH 6.0, 15 min

**GTX637972 WB Image**

Various whole cell extracts (30 μ g) were separated by 5% SDS-PAGE, and the membrane was blotted with KDM6A antibody [HL2068] (GTX637972) diluted at 1:1000. The HRP-conjugated anti-rabbit IgG antibody (GTX213110-01) was used to detect the primary antibody. Corresponding RNA expression data for the same cell lines are based on Human Protein Atlas program.

**GTX637972 ICC/IF Image**

KDM6A antibody [HL2068] detects KDM6A protein at nucleus by immunofluorescent analysis.

Sample: MCF-7 cells were fixed in ice-cold MeOH for 5 min.

Green: KDM6A stained by KDM6A antibody [HL2068] (GTX637972) diluted at 1:500.

Red: alpha Tubulin, a cytoskeleton marker, stained by alpha Tubulin antibody [GT114] (GTX628802) diluted at 1:1000.

Scale bar= 10 μ m.



For full product information, images and publications, please visit our [website](#).