

PKC gamma antibody [HL2227]

Cat. No. GTX638272

宿主	Rabbit
克隆	Monoclonal
同种型	IgG
实验应用	WB, ICC/IF, IHC-Fr
种属反应	Human, Mouse, Rat

★★★★★ 产品评论 (1)

实验应用

应用说明

*最佳稀释倍数与浓度应由研究人员确认

Suggested dilution	Recommended dilution
WB	1:500-1:3000
ICC/IF	Assay dependent
IHC-Fr	Assay dependent

以下为常规应用缩写的中文注解

WB: 免疫印迹

ICC/IF: 细胞染色

IHC-P: 石蜡切片

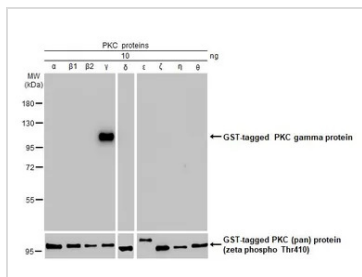
IHC-Fr: 冰冻切片

属性

形式	Liquid
存储溶液	PBS
保存剂	No preservatives
存放说明	Store as concentrated solution. Centrifuge briefly prior to opening vial. For short-term storage (1-2 weeks), store at 4°C. For long-term storage, aliquot and store at -20°C or below. Avoid multiple freeze-thaw cycles.
浓度	1 mg/ml (Please refer to the vial label for the specific concentration.)
偶联	Unconjugated
注意事项	仅供实验室使用。不适用于人类或动物的任何临床, 治疗或诊断用途。不适合动物或人类食用。

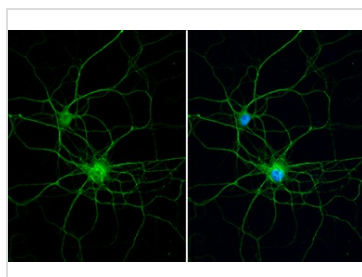
For full product information, images and publications, please visit our [website](#).

產品圖片



GTX638272 WB Image

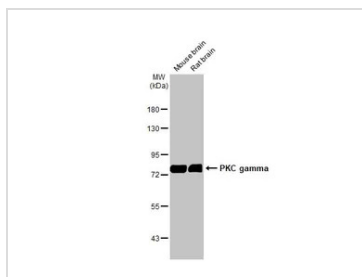
PKC proteins (10 ng) were separated by 7.5% SDS-PAGE, and the membrane was blotted with PKC gamma antibody [HL2227] (GTX638272) diluted at 1:1000. The HRP-conjugated anti-rabbit IgG antibody (GTX213110-01) was used to detect the primary antibody, and the signal was developed with Trident ECL plus-Enhanced.



GTX638272 ICC/IF Image

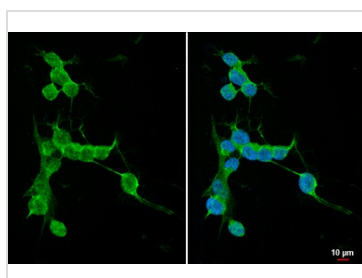
PKC gamma antibody [HL2227] detects PKC gamma protein at neurite by immunofluorescent analysis. Sample: DIV9 rat E18 primary hippocampal neuron cells were fixed in 4% paraformaldehyde at RT for 15 min.

Green: PKC gamma stained by PKC gamma antibody [HL2227] (GTX638272) diluted at 1:250.
Blue: Fluoroshield with DAPI (GTX30920).



GTX638272 WB Image

Various tissue extracts (50 μg) were separated by 7.5% SDS-PAGE, and the membrane was blotted with PKC gamma antibody [HL2227] (GTX638272) diluted at 1:5000. The HRP-conjugated anti-rabbit IgG antibody (GTX213110-01) was used to detect the primary antibody.



GTX638272 ICC/IF Image

PKC gamma antibody [HL2227] detects PKC gamma protein at cytoplasm by immunofluorescent analysis. Sample: SH-SY5Y cells were fixed in 4% paraformaldehyde at RT for 15 min.

Green: PKC gamma stained by PKC gamma antibody [HL2227] (GTX638272) diluted at 1:500.
Blue: Fluoroshield with DAPI (GTX30920).



For full product information, images and publications, please visit our [website](#).