

Wnt10b antibody [HL2370]

Cat. No. GTX638576

| | |
|------|------------------------------|
| 宿主 | Rabbit |
| 克隆 | Monoclonal |
| 同种型 | IgG |
| 实验应用 | WB, ICC/IF, IHC-P |
| 种属反应 | Human, Mouse, Rat, Zebrafish |

实验应用

应用说明

*最佳稀释倍数与浓度应由研究人员确认

| Suggested dilution | Recommended dilution |
|--------------------|----------------------|
| WB | 1:500-1:10000 |
| ICC/IF | Assay dependent |
| IHC-P | Assay dependent |

以下为常规应用缩写的中文注解

WB: 免疫印迹

ICC/IF: 细胞染色

IHC-P: 石蜡切片

IHC-Fr: 冰冻切片

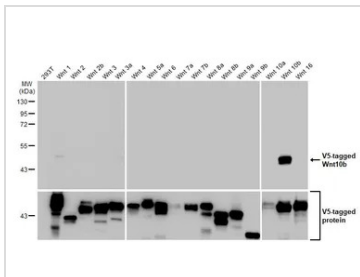
属性

| | |
|------|--|
| 形式 | Liquid |
| 存储溶液 | PBS |
| 保存剂 | No preservative |
| 存放说明 | Store as concentrated solution. Centrifuge briefly prior to opening vial. For short-term storage (1-2 weeks), store at 4°C. For long-term storage, aliquot and store at -20°C or below. Avoid multiple freeze-thaw cycles. |
| 浓度 | 1 mg/ml (Please refer to the vial label for the specific concentration.) |
| 偶联 | Unconjugated |
| 注意事项 | 仅供实验室使用。不适用于人类或动物的任何临床、治疗或诊断用途。不适合动物或人类食用。 |



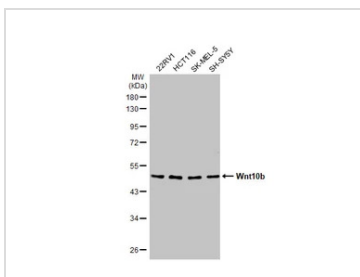
For full product information, images and publications, please visit our [website](#).

產品圖片



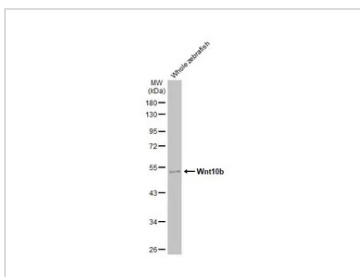
GTX638576 WB Image

Non-transfected (–) and transfected (+) 293T whole cell extracts (30 µg) were separated by 10% SDS-PAGE, and the membrane was blotted with Wnt10b antibody [HL2370] (GTX638576) diluted at 1:5000. The HRP-conjugated anti-rabbit IgG antibody (GTX213110-01) was used to detect the primary antibody.



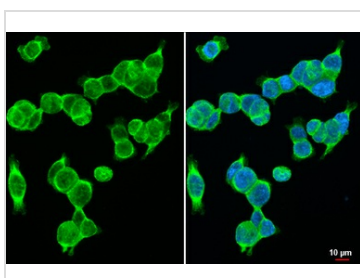
GTX638576 WB Image

Various whole cell extracts (30 µg) were separated by 10% SDS-PAGE, and the membrane was blotted with Wnt10b antibody [HL2370] (GTX638576) diluted at 1:500. The HRP-conjugated anti-rabbit IgG antibody (GTX213110-01) was used to detect the primary antibody, and the signal was developed with Trident ECL plus-Enhanced.



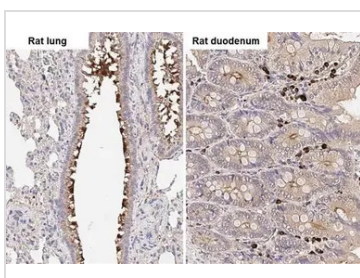
GTX638576 WB Image

Whole zebrafish extract (30 µg) was separated by 10% SDS-PAGE, and the membrane was blotted with Wnt10b antibody [HL2370] (GTX638576) diluted at 1:1000. The HRP-conjugated anti-rabbit IgG antibody (GTX213110-01) was used to detect the primary antibody, and the signal was developed with Trident ECL plus-Enhanced.



GTX638576 ICC/IF Image

Wnt10b antibody [HL2370] detects Wnt10b protein at cell membrane by immunofluorescent analysis. Sample: HCT116 cells were fixed in 4% paraformaldehyde at RT for 15 min. Green: Wnt10b stained by Wnt10b antibody [HL2370] (GTX638576) diluted at 1:500. Blue: Fluoroshield with DAPI (GTX30920).



GTX638576 IHC-P Image

Wnt10b antibody [HL2370] detects Wnt10b protein by immunohistochemical analysis. Sample: Paraffin-embedded rat tissues. Wnt10b stained by Wnt10b antibody [HL2370] (GTX638576) diluted at 1:100. Antigen Retrieval: Citrate buffer, pH 6.0, 15 min



For full product information, images and publications, please visit our [website](https://www.genetex.com).