

Vasa antibody [HL2485-MS]

Cat. No. GTX639347

宿主	Mouse
克隆	Monoclonal
同种型	IgG
实验应用	IHC-Wm
种属反应	Zebrafish

实验应用

应用说明

*最佳稀释倍数与浓度应由研究人员确认

Suggested dilution	Recommended dilution
IHC-Wm	Assay dependent

以下为常规应用缩写的中文注解

WB: 免疫印迹

ICC/IF: 细胞染色

IHC-P: 石蜡切片

IHC-Fr: 冰冻切片

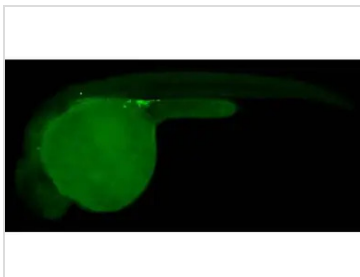
属性

形式	Liquid
存储溶液	PBS
保存剂	No preservatives
存放说明	Store as concentrated solution. Centrifuge briefly prior to opening vial. For short-term storage (1-2 weeks), store at 4°C. For long-term storage, aliquot and store at -20°C or below. Avoid multiple freeze-thaw cycles.
浓度	1 mg/ml (Please refer to the vial label for the specific concentration.)
偶联	Unconjugated
注意事项	仅供实验室使用。不适用于人类或动物的任何临床, 治疗或诊断用途。不适合动物或人类食用。



For full product information, images and publications, please visit our [website](#).

產品圖片

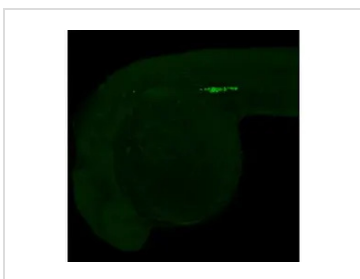
**GTX639347 IHC-Wm Image**

Vasa antibody [HL2485-MS] detects Vasa protein on whole mount zebrafish by immunohistochemical analysis.

Sample: Paraformaldehyde-fixed 1 day-post-fertilization zebrafish embryo.

Green: Vasa stained by Vasa antibody [HL2485-MS] (GTX639347) diluted at 1:50.

Antigen Retrieval: Tris-HCl buffer, pH 9.0, 20 min at 70°C

**GTX639347 IHC-Wm Image**

Vasa antibody [HL2485-MS] detects Vasa protein on whole mount zebrafish by immunohistochemical analysis.

Sample: Paraformaldehyde-fixed 1 day-post-fertilization zebrafish embryo.

Green: Vasa stained by Vasa antibody [HL2485-MS] (GTX639347) diluted at 1:100.

Antigen Retrieval: Tris-HCl buffer, pH 9.0, 20 min at 70°C



For full product information, images and publications, please visit our [website](#).