

CCR7 antibody [HL3074]

Cat. No. GTX640520

宿主	Rabbit
克隆	Monoclonal
同种型	IgG
实验应用	ICC/IF, IHC-P
种属反应	Human

实验应用

应用说明

*最佳稀释倍数与浓度应由研究人员确认

Suggested dilution	Recommended dilution
ICC/IF	1:100-1:1000
IHC-P	1:100-1:1000

以下为常规应用缩写的中文注解

WB: 免疫印迹

ICC/IF: 细胞染色

IHC-P: 石蜡切片

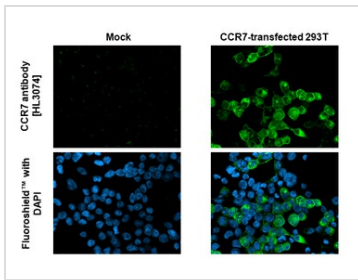
IHC-Fr: 冰冻切片

属性

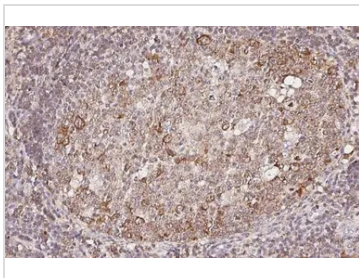
形式	Liquid
存储溶液	PBS
保存剂	No preservative
存放说明	Store as concentrated solution. Centrifuge briefly prior to opening vial. For short-term storage (1-2 weeks), store at 4°C. For long-term storage, aliquot and store at -20°C or below. Avoid multiple freeze-thaw cycles.
浓度	1 mg/ml (Please refer to the vial label for the specific concentration.)
偶联	Unconjugated
注意事项	仅供实验室使用。不适用于人类或动物的任何临床、治疗或诊断用途。不适合动物或人类食用。



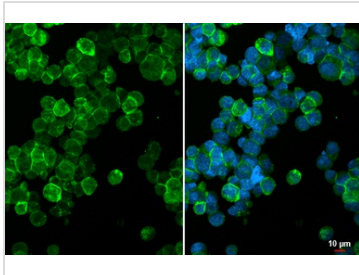
For full product information, images and publications, please visit our [website](#).

產品圖片

GTX640520 ICC/IF Image

CCR7 antibody [HL3074] detects CCR7 protein by immunofluorescent analysis.
 Sample: Mock and transfected 293T cells were fixed in ice-cold MeOH for 5 min.
 Green: CCR7 stained by CCR7 antibody [HL3074] (GTX640520) diluted at 1:500.
 Blue: Fluoroshield with DAPI (GTX30920).


GTX640520 IHC-P Image

CCR7 antibody [HL3074] detects CCR7 protein by immunohistochemical analysis.
 Sample: Paraffin-embedded human spleen.
 CCR7 stained by CCR7 antibody [HL3074] (GTX640520) diluted at 1:100.
 Antigen Retrieval: Citrate buffer, pH 6.0, 15 min


GTX640520 ICC/IF Image

CCR7 antibody [HL3074] detects CCR7 protein by immunofluorescent analysis.
 Sample: MJ cells were fixed in ice-cold MeOH for 5 min.
 Green: CCR7 stained by CCR7 antibody [HL3074] (GTX640520) diluted at 1:100.
 Blue: Fluoroshield with DAPI (GTX30920).



For full product information, images and publications, please visit our [website](https://www.genetex.com).