

## GABA Transporter 1 / GAT1 antibody [HL3475]

**Cat. No. GTX641360**

宿主	Rabbit
克隆	Monoclonal
同种型	IgG
实验应用	WB, IHC-P, IHC-Fr
种属反应	Human, Mouse, Rat

## 实验应用

## 应用说明

\*最佳稀释倍数与浓度应由研究人员确认

Suggested dilution	Recommended dilution
WB	1:500-1:3000
IHC-P	Assay dependent
IHC-Fr	Assay dependent

以下为常规应用缩写的中文注解

WB: 免疫印迹

ICC/IF: 细胞染色

IHC-P: 石蜡切片

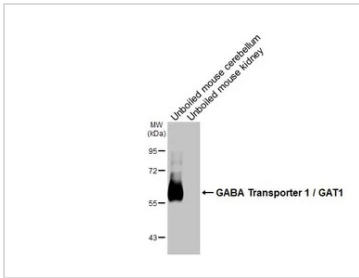
IHC-Fr: 冰冻切片

## 属性

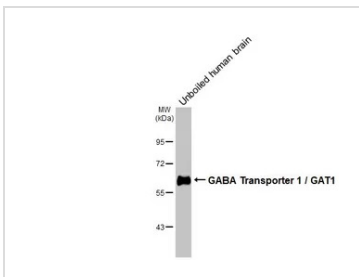
形式	Liquid
存储溶液	PBS
保存剂	No preservative
存放说明	Store as concentrated solution. Centrifuge briefly prior to opening vial. For short-term storage (1-2 weeks), store at 4°C. For long-term storage, aliquot and store at -20°C or below. Avoid multiple freeze-thaw cycles.
浓度	1 mg/ml (Please refer to the vial label for the specific concentration.)
偶联	Unconjugated
注意事项	仅供实验室使用。不适用于人类或动物的任何临床、治疗或诊断用途。不适合动物或人类食用。



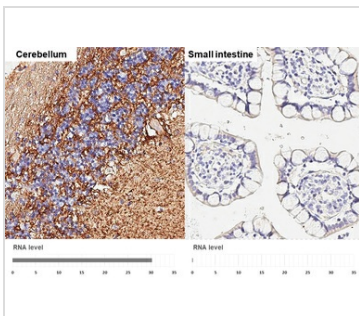
For full product information, images and publications, please visit our [website](#).

**產品圖片**

**GTX641360 WB Image**

Unboiled various tissue extracts (50 µg) were separated by 7.5% SDS-PAGE, and the membrane was blotted with GABA Transporter 1 / GAT1 antibody [HL3475] (GTX641360) diluted at 1:1000. The HRP-conjugated anti-rabbit IgG antibody (GTX213110-01) was used to detect the primary antibody.


**GTX641360 WB Image**

Unboiled human tissue extract was separated by 7.5% SDS-PAGE, and the membrane was blotted with GABA Transporter 1 / GAT1 antibody [HL3475] (GTX641360) diluted at 1:1000. The HRP-conjugated anti-rabbit IgG antibody (GTX213110-01) was used to detect the primary antibody.


**GTX641360 IHC-P Image**

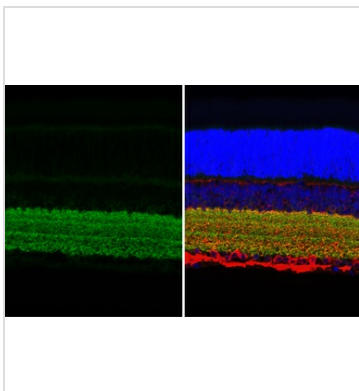
GABA Transporter 1 / GAT1 antibody [HL3475] detects GABA Transporter 1 / GAT1 protein by immunohistochemical analysis.

Sample: Paraffin-embedded human tissues.

GABA Transporter 1 / GAT1 stained by GABA Transporter 1 / GAT1 antibody [HL3475] (GTX641360) diluted at 1:200.

Antigen Retrieval: Citrate buffer, pH 6.0, 15 min

Corresponding RNA levels (RPKM) in the tissues are based on NCBI database.


**GTX641360 IHC-P Image**

GABA Transporter 1 / GAT1 antibody [HL3475] detects GABA Transporter 1 / GAT1 protein by immunohistochemical analysis.

Sample: Paraffin-embedded rat eye.

Green: GABA Transporter 1 / GAT1 stained by GABA Transporter 1 / GAT1 antibody [HL3475] (GTX641360) diluted at 1:250.

Red: beta Tubulin 3/ Tuj1 stained by beta Tubulin 3/ Tuj1 antibody [GT11710] (GTX631836) diluted at 1:500.

Blue: Fluoroshield with DAPI (GTX30920).

Antigen Retrieval: Citrate buffer, pH 6.0, 15 min



For full product information, images and publications, please visit our [website](https://www.genetex.com).