

Latrophilin 2 antibody [HL4090]

Cat. No. GTX642529

宿主	Rabbit
克隆	Monoclonal
同种型	IgG
实验应用	WB, IHC-P, IHC-Fr
种属反应	Human, Mouse

★★★★★ 产品评论 (1)

实验应用

应用说明

*最佳稀释倍数与浓度应由研究人员确认

Suggested dilution	Recommended dilution
WB	1:1000-1:10000
IHC-P	Assay dependent
IHC-Fr	Assay dependent

以下为常规应用缩写的中文注解

WB: 免疫印迹

ICC/IF: 细胞染色

IHC-P: 石蜡切片

IHC-Fr: 冰冻切片

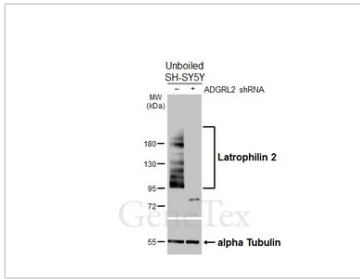
属性

形式	Liquid
存储溶液	PBS
保存剂	No preservatives
存放说明	Store as concentrated solution. Centrifuge briefly prior to opening vial. For short-term storage (1-2 weeks), store at 4°C. For long-term storage, aliquot and store at -20°C or below. Avoid multiple freeze-thaw cycles.
浓度	1 mg/ml (Please refer to the vial label for the specific concentration.)
偶联	Unconjugated
注意事项	仅供实验室使用。不适用于人类或动物的任何临床, 治疗或诊断用途。不适合动物或人类食用。



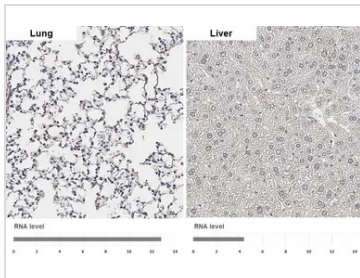
For full product information, images and publications, please visit our [website](#).

產品圖片



GTX642529 WB Image

Non-transfected (-) and transfected (+) unboiled SH-SY5Y whole cell extracts (30 µg) were separated by 7.5% SDS-PAGE, and the membrane was blotted with Latrophilin 2 antibody [HL4090] (GTX642529) diluted at 1:1000. The HRP-conjugated anti-rabbit IgG antibody (GTX213110-01) was used to detect the primary antibody.



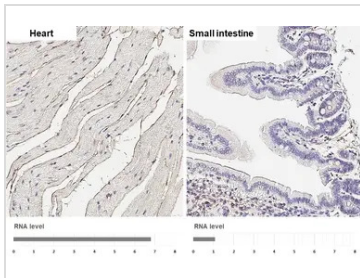
GTX642529 IHC-P Image

Latrophilin 2 antibody [HL4090] detects Latrophilin 2 protein by immunohistochemical analysis. Sample: Paraffin-embedded mouse tissues.

Latrophilin 2 stained by Latrophilin 2 antibody [HL4090] (GTX642529) diluted at 1:200.

Antigen Retrieval: Citrate buffer, pH 6.0, 15 min

Corresponding RNA levels (RPKM) in the tissues are based on NCBI database.



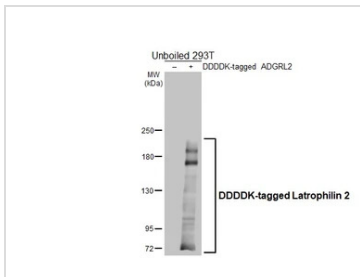
GTX642529 IHC-P Image

Latrophilin 2 antibody [HL4090] detects Latrophilin 2 protein by immunohistochemical analysis. Sample: Paraffin-embedded mouse tissues.

Latrophilin 2 stained by Latrophilin 2 antibody [HL4090] (GTX642529) diluted at 1:200.

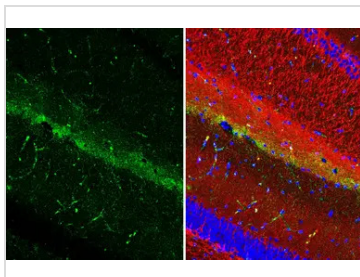
Antigen Retrieval: Citrate buffer, pH 6.0, 15 min

Corresponding RNA levels (RPKM) in the tissues are based on NCBI database.



GTX642529 WB Image

Non-transfected (-) and transfected (+) unboiled 293T whole cell extracts (30 µg) were separated by 5% SDS-PAGE, and the membrane was blotted with Latrophilin 2 antibody [HL4090] (GTX642529) diluted at 1:5000. The HRP-conjugated anti-rabbit IgG antibody (GTX213110-01) was used to detect the primary antibody.



GTX642529 IHC-P Image

Latrophilin 2 antibody [HL4090] detects Latrophilin 2 protein by immunohistochemical analysis. Sample: Paraffin-embedded mouse hippocampal CA1.

Green: Latrophilin 2 stained by Latrophilin 2 antibody [HL4090] (GTX642529) diluted at 1:400.

Red: beta Tubulin 3/ Tuj1 antibody [GT11710] (GTX631836) diluted at 1:500.

Blue: Fluoroshield with DAPI (GTX30920).

Antigen Retrieval: Tris-EDTA buffer, pH 9.0, 15 min



For full product information, images and publications, please visit our [website](#).