

## TAS1R2 antibody [HL4180]

Cat. No. GTX642994

宿主	Rabbit
克隆	Monoclonal
同种型	IgG
实验应用	WB, ICC/IF
种属反应	Human

## 实验应用

## 应用说明

\*最佳稀释倍数与浓度应由研究人员确认

Suggested dilution	Recommended dilution
WB	1:500-1:3000
ICC/IF	Assay dependent

以下为常规应用缩写的中文注解

WB: 免疫印迹

ICC/IF: 细胞染色

IHC-P: 石蜡切片

IHC-Fr: 冰冻切片

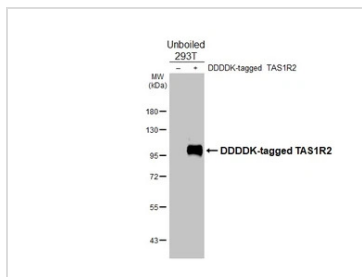
## 属性

形式	Liquid
存储溶液	PBS
保存剂	No preservatives
存放说明	Store as concentrated solution. Centrifuge briefly prior to opening vial. For short-term storage (1-2 weeks), store at 4°C. For long-term storage, aliquot and store at -20°C or below. Avoid multiple freeze-thaw cycles.
浓度	1 mg/ml
偶联	Unconjugated
注意事项	仅供实验室使用。不适用于人类或动物的任何临床，治疗或诊断用途。不适合动物或人类食用。

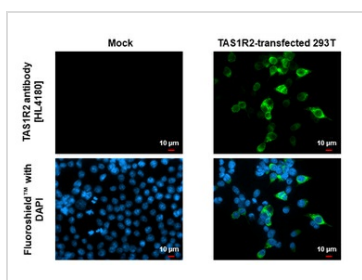


For full product information, images and publications, please visit our [website](#).

## 產品圖片

**GTX642994 WB Image**

Non-transfected (-) and transfected (+) unboiled 293T whole cell extracts (30  $\mu$ g) were separated by 7.5% SDS-PAGE, and the membrane was blotted with TAS1R2 antibody [HL4180] (GTX642994) diluted at 1:1000. The HRP-conjugated anti-rabbit IgG antibody (GTX213110-01) was used to detect the primary antibody.

**GTX642994 ICC/IF Image**

TAS1R2 antibody [HL4180] detects TAS1R2 protein by immunofluorescent analysis. Sample: Mock and transfected 293T cells were fixed in ice-cold MeOH for 5 min. Green: TAS1R2 stained by TAS1R2 antibody [HL4180] (GTX642994) diluted at 1:500. Blue: Fluoroshield with DAPI (GTX30920).



For full product information, images and publications, please visit our [website](#).