

Flotillin 1 antibody [HL4250]

Cat. No. GTX643486

宿主	Rabbit
克隆	Monoclonal
同种型	IgG
实验应用	WB, IHC-P
种属反应	Human, Mouse, Rat

实验应用

应用说明

*最佳稀释倍数与浓度应由研究人员确认

Suggested dilution	Recommended dilution
WB	Assay dependent
IHC-P	1:100-1:1000

Note : Antigen retrieval: Tris-EDTA (pH9.0) is recommended.

以下为常规应用缩写的中文注解

WB: 免疫印迹

ICC/IF: 细胞染色

IHC-P: 石蜡切片

IHC-Fr: 冰冻切片

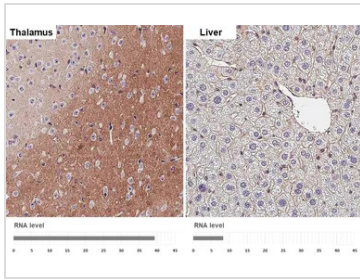
属性

形式	Liquid
存储溶液	PBS
保存剂	No preservatives
存放说明	Store as concentrated solution. Centrifuge briefly prior to opening vial. For short-term storage (1-2 weeks), store at 4°C. For long-term storage, aliquot and store at -20°C or below. Avoid multiple freeze-thaw cycles.
浓度	1 mg/ml
偶联	Unconjugated
注意事项	仅供实验室使用。不适用于人类或动物的任何临床, 治疗或诊断用途。不适合动物或人类食用。



For full product information, images and publications, please visit our [website](#).

產品圖片

**GTX643486 IHC-P Image**

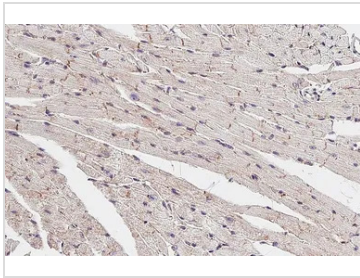
Flotillin 1 antibody [HL4250] detects Flotillin 1 protein by immunohistochemical analysis.

Sample: Paraffin-embedded mouse tissues.

Flotillin 1 stained by Flotillin 1 antibody [HL4250] (GTX643486) diluted at 1:200.

Antigen Retrieval: Tris-EDTA buffer, pH 9.0, 15 min

Corresponding RNA levels (RPKM) in the tissues are based on NCBI database.

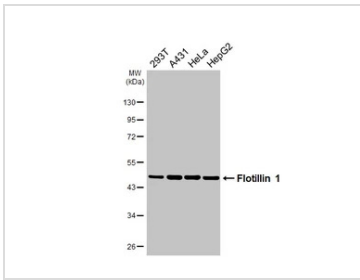
**GTX643486 IHC-P Image**

Flotillin 1 antibody [HL4250] detects Flotillin 1 protein by immunohistochemical analysis.

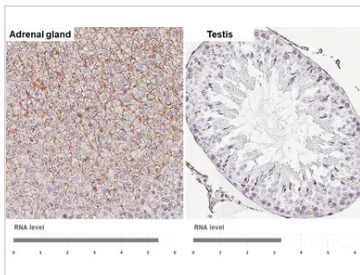
Sample: Paraffin-embedded mouse heart.

Flotillin 1 stained by Flotillin 1 antibody [HL4250] (GTX643486) diluted at 1:200.

Antigen Retrieval: Tris-EDTA buffer, pH 9.0, 15 min

**GTX643486 WB Image**

Various whole cell extracts (30 µg) were separated by 10% SDS-PAGE, and the membrane was blotted with Flotillin 1 antibody [HL4250] (GTX643486) diluted at 1:1000. The HRP-conjugated anti-rabbit IgG antibody (GTX213110-01) was used to detect the primary antibody.

**GTX643486 IHC-P Image**

Flotillin 1 antibody [HL4250] detects Flotillin 1 protein by immunohistochemical analysis.

Sample: Paraffin-embedded rat tissues.

Flotillin 1 stained by Flotillin 1 antibody [HL4250] (GTX643486) diluted at 1:200.

Antigen Retrieval: Tris-EDTA buffer, pH 9.0, 15 min

Corresponding RNA levels (RPKM) in the tissues are based on NCBI database.

**GTX643486 IHC-P Image**

Flotillin 1 antibody [HL4250] detects Flotillin 1 protein by immunohistochemical analysis.

Sample: Paraffin-embedded rat heart.

Flotillin 1 stained by Flotillin 1 antibody [HL4250] (GTX643486) diluted at 1:200.

Antigen Retrieval: Tris-EDTA buffer, pH 9.0, 15 min



For full product information, images and publications, please visit our [website](#).