

## ATP5D antibody [HL4372]

Cat. No. GTX643629

宿主	Rabbit
克隆	Monoclonal
同种型	IgG
实验应用	WB, IHC-P
种属反应	Human, Mouse, Rat, Zebrafish

## 实验应用

## 应用说明

\*最佳稀释倍数与浓度应由研究人员确认

Suggested dilution	Recommended dilution
WB	1:500-1:3000
IHC-P	Assay dependent

以下为常规应用缩写的中文注解

WB: 免疫印迹

ICC/IF: 细胞染色

IHC-P: 石蜡切片

IHC-Fr: 冰冻切片

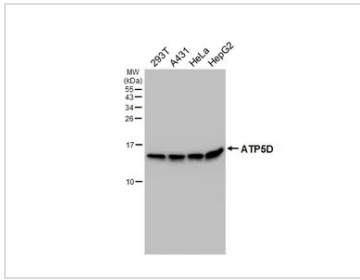
## 属性

形式	Liquid
存储溶液	PBS
保存剂	No preservatives
存放说明	Store as concentrated solution. Centrifuge briefly prior to opening vial. For short-term storage (1-2 weeks), store at 4°C. For long-term storage, aliquot and store at -20°C or below. Avoid multiple freeze-thaw cycles.
浓度	1 mg/ml (Please refer to the vial label for the specific concentration.)
偶联	Unconjugated
注意事项	仅供实验室使用。不适用于人类或动物的任何临床、治疗或诊断用途。不适合动物或人类食用。



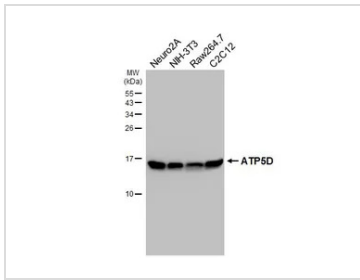
For full product information, images and publications, please visit our [website](#).

產品圖片



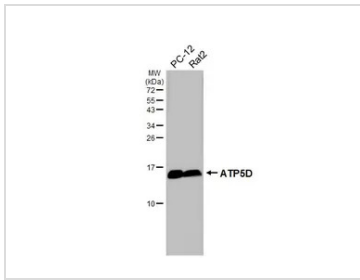
**GTX643629 WB Image**

Various whole cell extracts (30 µg) were separated by 15% SDS-PAGE, and the membrane was blotted with ATP5D antibody [HL4372] (GTX643629) diluted at 1:1000. The HRP-conjugated anti-rabbit IgG antibody (GTX213110-01) was used to detect the primary antibody.



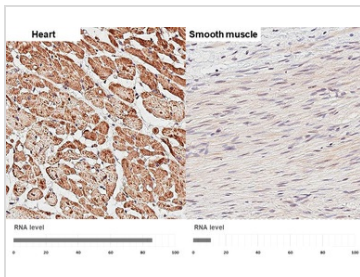
**GTX643629 WB Image**

Various whole cell extracts (30 µg) were separated by 15% SDS-PAGE, and the membrane was blotted with ATP5D antibody [HL4372] (GTX643629) diluted at 1:1000. The HRP-conjugated anti-rabbit IgG antibody (GTX213110-01) was used to detect the primary antibody.



**GTX643629 WB Image**

Various whole cell extracts (30 µg) were separated by 15% SDS-PAGE, and the membrane was blotted with ATP5D antibody [HL4372] (GTX643629) diluted at 1:1000. The HRP-conjugated anti-rabbit IgG antibody (GTX213110-01) was used to detect the primary antibody.



**GTX643629 IHC-P Image**

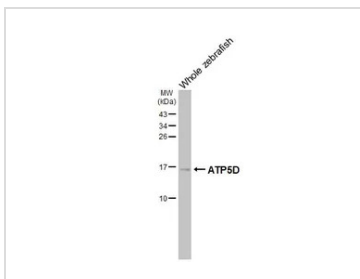
ATP5D antibody [HL4372] detects ATP5D protein by immunohistochemical analysis.

Sample: Paraffin-embedded human tissues.

ATP5D stained by ATP5D antibody [HL4372] (GTX643629) diluted at 1:200.

Antigen Retrieval: Citrate buffer, pH 6.0, 15 min

Corresponding RNA levels (nTPM) in the tissues are based on Human Protein Atlas program.



**GTX643629 WB Image**

Whole zebrafish extract (30 µg) was separated by 15% SDS-PAGE, and the membrane was blotted with ATP5D antibody [HL4372] (GTX643629) diluted at 1:1000. The HRP-conjugated anti-rabbit IgG antibody (GTX213110-01) was used to detect the primary antibody, and the signal was developed with Trident femto Western HRP Substrate.



For full product information, images and publications, please visit our [website](#).