

## eIF2 alpha (phospho Ser51) antibody

**Cat. No. GTX66600**

宿主	Rabbit
克隆	Polyclonal
同种型	IgG
实验应用	WB, IP
种属反应	Human

## 实验应用

## 应用说明

\*最佳稀释倍数与浓度应由研究人员确认

Suggested dilution	Recommended dilution
WB	1:1000 - 1:2000
IP	1:50 - 1:100

以下为常规应用缩写的中文注解

WB: 免疫印迹

ICC/IF: 细胞染色

IHC-P: 石蜡切片

IHC-Fr: 冰冻切片

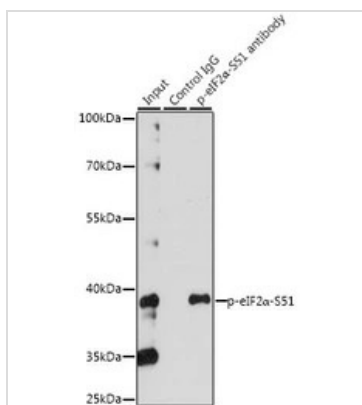
## 属性

形式	Liquid
存储溶液	PBS, 50% Glycerol
保存剂	0.09% Sodium azide
存放说明	Store as concentrated solution. Centrifuge briefly prior to opening vial. For short-term storage (1-2 weeks), store at 4°C. For long-term storage, aliquot and store at -20°C or below. Avoid multiple freeze-thaw cycles.
浓度	Batch dependent (Please refer to the vial label for the specific concentration.)
偶联	Unconjugated
注意事项	仅供实验室使用。不适用于人类或动物的任何临床，治疗或诊断用途。不适合动物或人类食用。



For full product information, images and publications, please visit our [website](#).

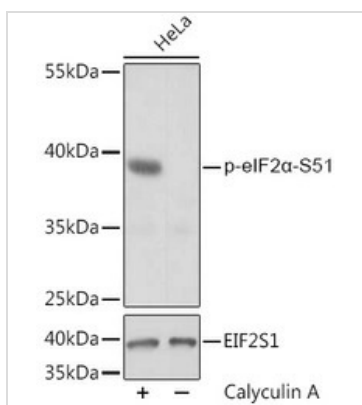
## 產品圖片

**GTX66600 IP Image**

IP analysis of HeLa cell lysate using GTX66600 eIF2 alpha (phospho Ser51) antibody.

Antibody amount : 3 $\mu$ g / 200 $\mu$ g lysate

Dilution : 1:1000

**GTX66600 WB Image**

WB analysis of HeLa cells treated by Calyculin A (100nM) for 30 minutes after serum-starvation overnight using GTX66600 eIF2 alpha (phospho Ser51) antibody.

Dilution : 1:2000

Loading : 25 $\mu$ g per lane



For full product information, images and publications, please visit our [website](#).