

Human ASL protein, His tag

Cat. No. GTX67238-pro

Species Human

Package
100 µg

实验应用

Observed MW 52 kDa.

属性

形式 Liquid

存储溶液 20mM Tris-HCl, 100mM NaCl, 10% Glycerol, 2mM DTT

保存剂 No preservative

存放说明 Store as concentrated solution. Centrifuge briefly prior to opening vial. For short-term storage (1-2 weeks), store at 4°C. For long-term storage, aliquot and store at -20°C or below. Avoid multiple freeze-thaw cycles.

浓度 0.5 mg/ml (Please refer to the vial label for the specific concentration.)

Region/Sequence

Full length protein, N-terminal His-Tag; MGSSHHHHHH SSGLVPRGSH MASESGKLWG GRFVGAVDPI MEKFNASIAY DRHLWEVDVQ GSKAYSRGLE KAGLLTKAEM DQILHGLDKV AEEWAQGTK LNSNDEDIHT ANERRKELI GATAGKLHTG RSRNDQVTD LRLWMRQTC TLSGLLWELI RTMVDRAEAE RDVLFPGYTH LQRAQPIRWS HWILSHAVAL TRDSERLLEV RKRINVLPLG SGAIAGNPLG VDRELLRAEL NFGAITLNSM DATSERDFVA EFLFWASLCM THLSRMAEDL ILYCTKEFSF VQLSDAYSTG SSLMPQKKNP DSLELIRSKA GRVFGRCAGL LMTLGLPST YNKDLQEDKE AVFEVSDTMS AVLQVATGVI STLQIHQENM GQALSPDMLA TDLAYYLVRK GMPFRQAHEA SGKAVFMAET KGVALNQLSL QELQTISPLF SGDVICWWDY GHSVEQYGAL GGTARSSVDW QIRQVRALLQ AQQA

表达系统 E. coli

纯度 > 95% by SDS-PAGE.

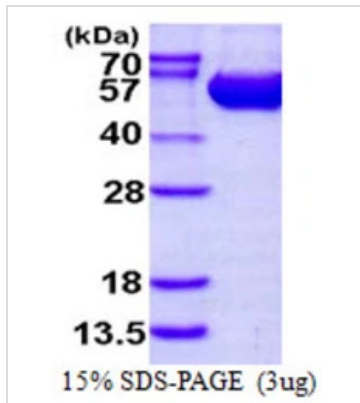
偶联 Unconjugated

注意事项 仅供实验室使用。不适用于人类或动物的任何临床、治疗或诊断用途。不适合动物或人类食用。



For full product information, images and publications, please visit our [website](#).

產品圖片

**GTX67238-pro Image**

3 μ g Human ASL protein (GTX67238-pro) by SDS-PAGE under reducing condition and visualized by coomassie blue stain.



For full product information, images and publications, please visit our [website](#).