

FEN1 antibody [4E7]

Cat. No. GTX70185

宿主	Mouse
克隆	Monoclonal
同种型	IgG1
实验应用	WB, ICC/IF, IP, ChIP assay
种属反应	Human, Mouse

引用文献 (26)

实验应用

应用说明

*最佳稀释倍数与浓度应由研究人员确认

Suggested dilution	Recommended dilution
WB	1:500-1:3000
ICC/IF	Assay dependent
IP	Assay dependent
ChIP assay	Assay dependent

以下为常规应用缩写的中文注解

WB: 免疫印迹

ICC/IF: 细胞染色

IHC-P: 石蜡切片

IHC-Fr: 冰冻切片

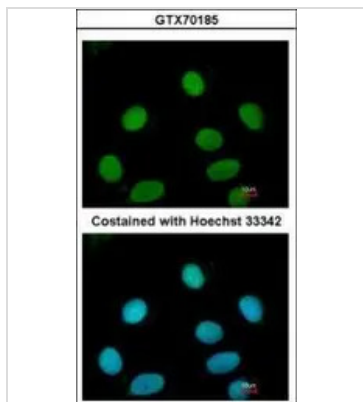
属性

形式	Liquid
存储溶液	PBS
保存剂	No preservatives
存放说明	Store as concentrated solution. Centrifuge briefly prior to opening vial. For short-term storage (1-2 weeks), store at 4°C. For long-term storage, aliquot and store at -20°C or below. Avoid multiple freeze-thaw cycles.
浓度	1.73 mg/ml (Please refer to the vial label for the specific concentration.)
偶联	Unconjugated
RRID	AB_370522
注意事项	仅供实验室使用。不适用于人类或动物的任何临床, 治疗或诊断用途。不适合动物或人类食用。



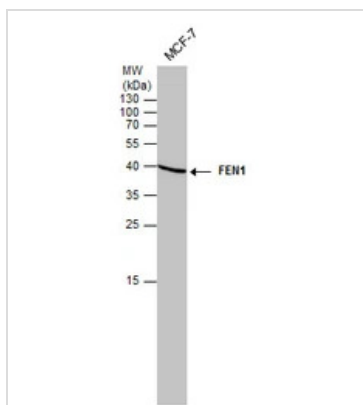
For full product information, images and publications, please visit our [website](#).

產品圖片



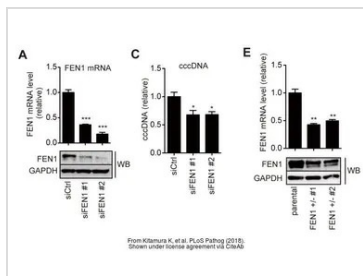
GTX70185 ICC/IF Image

Immunofluorescence analysis of paraformaldehyde-fixed MCF7, using FEN1 [4E7](GTX70185) antibody at 1:200 dilution.



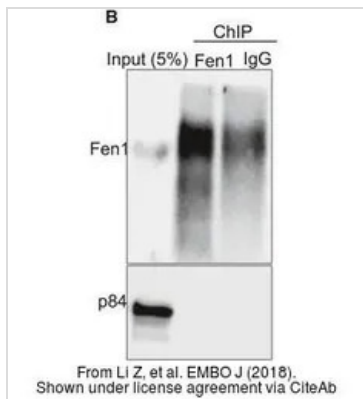
GTX70185 WB Image

Whole cell extract (30 µg) was separated by 12% SDS-PAGE, and the membrane was blotted with FEN1 antibody (GTX70185) diluted at 1:500. The HRP-conjugated anti-mouse IgG antibody (GTX213111-01) was used to detect the primary antibody.



GTX70185 WB Image

The data was published in the journal PLoS Pathog in 2018. [PMID: 29928064](https://pubmed.ncbi.nlm.nih.gov/29928064/)



GTX70185 WB ChIP assay Image

The data was published in the journal EMBO J in 2018. [PMID: 29773570](https://pubmed.ncbi.nlm.nih.gov/29773570/)



For full product information, images and publications, please visit our [website](https://www.genetex.com).