

## GST tag antibody [3G10]

Cat. No. GTX70195

宿主	Mouse
克隆	Monoclonal
同种型	IgG1
实验应用	WB, IP
种属反应	Species independent

引用文献 (6)

## 实验应用

## 应用说明

\*最佳稀释倍数与浓度应由研究人员确认

Suggested dilution	Recommended dilution
WB	0.1 - 2 µg/ml
IP	Assay dependent

以下为常规应用缩写的中文注解

WB: 免疫印迹

ICC/IF: 细胞染色

IHC-P: 石蜡切片

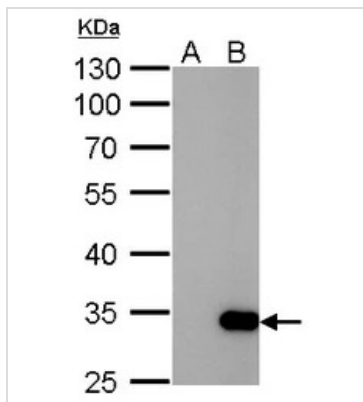
IHC-Fr: 冰冻切片

## 属性

形式	Liquid
存储溶液	PBS
保存剂	No preservatives
存放说明	Store as concentrated solution. Centrifuge briefly prior to opening vial. For short-term storage (1-2 weeks), store at 4°C. For long-term storage, aliquot and store at -20°C or below. Avoid multiple freeze-thaw cycles.
浓度	1 mg/ml (Please refer to the vial label for the specific concentration.)
偶联	Unconjugated
RRID	AB_371442
注意事项	仅供实验室使用。不适用于人类或动物的任何临床, 治疗或诊断用途。不适合动物或人类食用。

For full product information, images and publications, please visit our [website](#).

產品圖片



**GTX70195 WB Image**

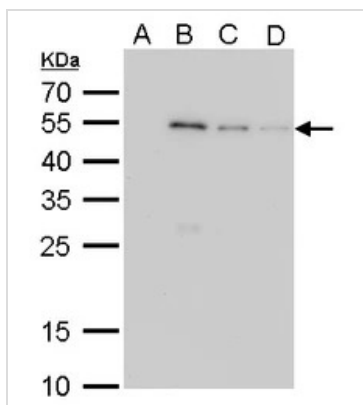
GST tag antibody [3G10] detects GST tag protein by Western blot analysis.

A. Non-induced cell lysate from E. coli expressing GST-tagged proteins

B. IPTG-induced cell lysate from E. coli expressing GST-tagged proteins

10 % SDS-PAGE

GST tag antibody [3G10] (GTX70195) dilution: 1:10000



**GTX70195 WB Image**

GST tag antibody [3G10] detects GST tag protein by Western blot analysis.

A. 2 µg His-recombinant protein

B. 2 µg GST-recombinant protein

C. 1 µg GST-recombinant protein

D. 0.5 µg GST-recombinant protein

10 % SDS-PAGE

GST tag antibody [3G10] (GTX70195) dilution: 1:5000



For full product information, images and publications, please visit our [website](#).