

GPX7 antibody [2704]

Cat. No. GTX70266

宿主	Mouse
克隆	Monoclonal
同种型	IgG2a
实验应用	WB, IHC-P, IHC
种属反应	Human, Mouse

引用文献 (6)

实验应用

应用说明

*最佳稀释倍数与浓度应由研究人员确认

Suggested dilution	Recommended dilution
WB	1:500-1:2000
IHC-P	1:200-1:500
IHC	Assay dependent

以下为常规应用缩写的中文注解

WB: 免疫印迹

ICC/IF: 细胞染色

IHC-P: 石蜡切片

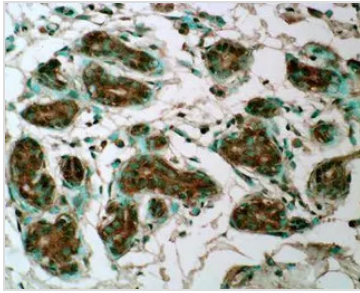
IHC-Fr: 冰冻切片

属性

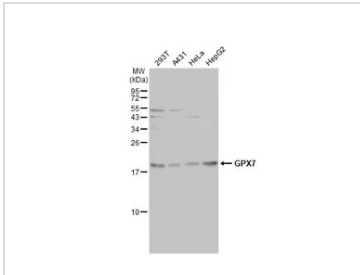
形式	Liquid
存储溶液	PBS, 20% Glycerol
保存剂	No preservatives
存放说明	Store as concentrated solution. Centrifuge briefly prior to opening vial. For short-term storage (1-2 weeks), store at 4°C. For long-term storage, aliquot and store at -20°C or below. Avoid multiple freeze-thaw cycles.
浓度	1 mg/ml (Please refer to the vial label for the specific concentration.)
偶联	Unconjugated
RRID	AB_370819
注意事项	仅供实验室使用。不适用于人类或动物的任何临床, 治疗或诊断用途。不适合动物或人类食用。

For full product information, images and publications, please visit our [website](#).

產品图片

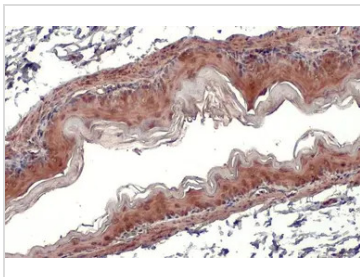


GTX70266 IHC Image



GTX70266 WB Image

Various whole cell extracts (30 μ g) were separated by 15% SDS-PAGE, and the membrane was blotted with GPX7 antibody [2704] (GTX70266) diluted at 1:1000. The HRP-conjugated anti-mouse IgG antibody (GTX213111-01) was used to detect the primary antibody, and the signal was developed with Trident ECL plus-Enhanced.



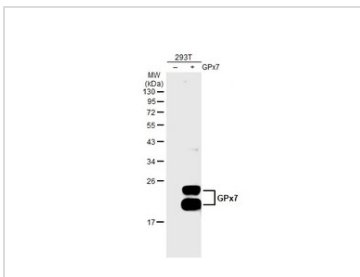
GTX70266 IHC-P Image

GPX7 antibody [2704] detects GPX7 protein at cytoplasm by immunohistochemical analysis.

Sample: Paraffin-embedded mouse stomach.

GPX7 stained by GPX7 antibody [2704] (GTX70266) diluted at 1:100.

Antigen Retrieval: Citrate buffer, pH 6.0, 15 min



GTX70266 WB Image

Non-transfected (-) and transfected (+) 293T whole cell extracts (30 μ g) were separated by 12% SDS-PAGE, and the membrane was blotted with GPX7 antibody [2704] (GTX70266) diluted at 1:500. The HRP-conjugated anti-mouse IgG antibody (GTX213111-01) was used to detect the primary antibody.



For full product information, images and publications, please visit our [website](#).