

## GPR108 antibody

Cat. No. GTX71565

宿主	Rabbit
克隆	Polyclonal
同种型	IgG
实验应用	IHC-P
种属反应	Human, Mouse, Rat, Bovine, Hamster

## 实验应用

## 应用说明

\*最佳稀释倍数与浓度应由研究人员确认

Suggested dilution	Recommended dilution
IHC-P	30 µg/ml

以下为常规应用缩写的中文注解

WB: 免疫印迹

ICC/IF: 细胞染色

IHC-P: 石蜡切片

IHC-Fr: 冰冻切片

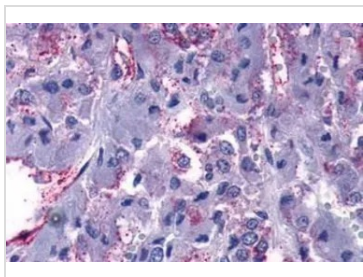
## 属性

形式	Liquid
存储溶液	PBS
保存剂	0.1% Sodium azide
存放说明	Store as concentrated solution. Centrifuge briefly prior to opening vial. For short-term storage (1-2 weeks), store at 4°C. For long-term storage, aliquot and store at -20°C or below. Avoid multiple freeze-thaw cycles.
浓度	1 mg/ml (Please refer to the vial label for the specific concentration.)
偶联	Unconjugated
RRID	AB_375813
注意事项	仅供实验室使用。不适用于人类或动物的任何临床，治疗或诊断用途。不适合动物或人类食用。

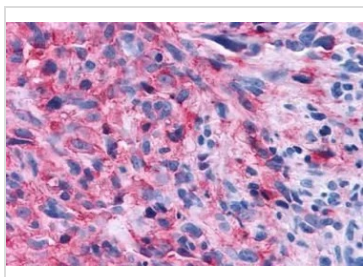


For full product information, images and publications, please visit our [website](#).

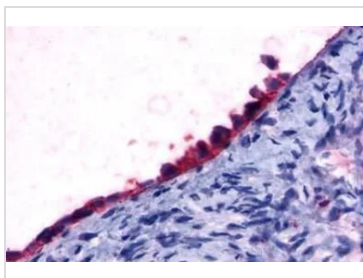
## 產品圖片

**GTX71565 IHC-P Image**

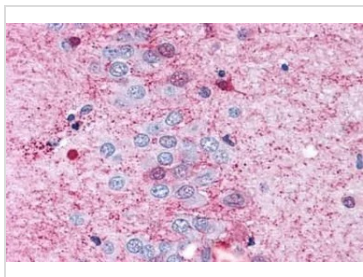
IHC-P analysis of human adrenal tissue using GTX71565 GPR108 antibody.  
Antigen retrieval : Heat-induced antigen retrieval

**GTX71565 IHC-P Image**

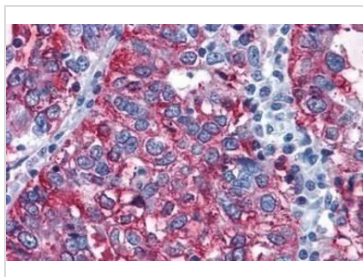
IHC-P analysis of brain, glioblastoma tissue using GTX71565 GPR108 antibody.

**GTX71565 IHC-P Image**

IHC-P analysis of human ovary, surface epithelium tissue using GTX71565 GPR108 antibody.  
Antigen retrieval : Heat-induced antigen retrieval

**GTX71565 IHC-P Image**

IHC-P analysis of brain, hippocampus, dentate gyrus tissue using GTX71565 GPR108 antibody.

**GTX71565 IHC-P Image**

IHC-P analysis of human ovary, carcinoma tissue using GTX71565 GPR108 antibody.  
Antigen retrieval : Heat-induced antigen retrieval



For full product information, images and publications, please visit our [website](#).