

## Involucrin antibody [SY5]

Cat. No. GTX72415

宿主	Mouse
克隆	Monoclonal
同种型	IgG1
实验应用	ICC/IF, IHC-P, IHC-Fr, ELISA
种属反应	Human, Rat, Dog, Pig, Monkey, Gorilla, Owl

引用文献 (3)

## 实验应用

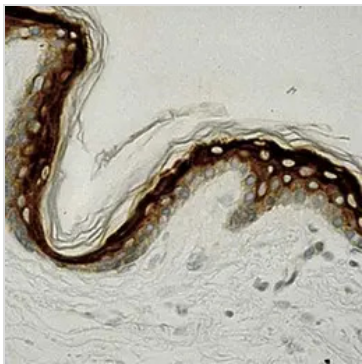
## 应用说明

ELISA (For coating, order Ab without BSA).

## 属性

形式	Liquid
存储溶液	PBS, 0.2% BSA
保存剂	0.09% Sodium azide
存放说明	Store as concentrated solution. Centrifuge briefly prior to opening vial. Store at 4°C. DO NOT FREEZE.
浓度	0.2 mg/ml (Please refer to the vial label for the specific concentration.)
偶联	Unconjugated
RRID	AB_383614
注意事项	仅供实验室使用。不适用于人类或动物的任何临床，治疗或诊断用途。不适合动物或人类食用。

## 产品图片



GTX72415 IHC-P Image

Formalin fixed paraffin embedded human skin stained with Involucrin antibody (cat. # GTX72415).



For full product information, images and publications, please visit our [website](#).