

AS160 / TBC1D4 (phospho Thr642) antibody

Cat. No. GTX76675

宿主	Rabbit
克隆	Polyclonal
同种型	IgG
实验应用	WB, IHC
种属反应	Human, Mouse, Rat

引用文献 (6)

实验应用

应用说明

*最佳稀释倍数与浓度应由研究人员确认

Suggested dilution	Recommended dilution
WB	Assay dependent
IHC	Assay dependent

以下为常规应用缩写的中文注解

WB: 免疫印迹

ICC/IF: 细胞染色

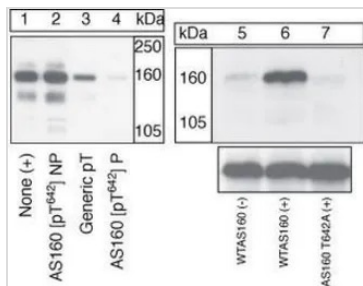
IHC-P: 石蜡切片

IHC-Fr: 冰冻切片

属性

形式	Liquid
存储溶液	PBS, 0.1% BSA, 50% Glycerol
保存剂	0.05% Sodium azide
存放说明	Store as concentrated solution. Centrifuge briefly prior to opening vial. For short-term storage (1-2 weeks), store at 4°C. For long-term storage, aliquot and store at -20°C or below. Avoid multiple freeze-thaw cycles.
浓度	Batch dependent (Please refer to the vial label for the specific concentration.)
偶联	Unconjugated
RRID	AB_510219
注意事项	仅供实验室使用。不适用于人类或动物的任何临床, 治疗或诊断用途。不适合动物或人类食用。

For full product information, images and publications, please visit our [website](#).

產品图片

GTX76675 WB Image

WB (peptide competition) analysis of 3T3-L1 cells (Lane 1-4) or COS cells over-expressing WT AS160 (Lane 5, 6) or mutant AS160 T642A (Lane 7), treated with PI-3-Kinase inhibitor LY294002 (Lane 5) or insulin (Lane 1-4, 6-7) using GTX76675 AS160 / TBC1D4 (phospho Thr642) antibody prior incubated with the non-phosphopeptide corresponding to the phosphopeptide immunogen (Lane 2), a generic phosphothreonine-containing peptide (Lane 3), or the phosphopeptide immunogen (Lane 4) control. The data show that only the immunogen phosphopeptide blocks the signal, demonstrating the specificity of the antibody.



For full product information, images and publications, please visit our [website](#).