

RPL18A antibody, C-term

Cat. No. GTX80536

| | |
|------|----------------|
| 宿主 | Rabbit |
| 克隆 | Polyclonal |
| 同种型 | IgG |
| 实验应用 | WB, IHC-P, FCM |
| 种属反应 | Human, Mouse |

实验应用

应用说明

*最佳稀释倍数与浓度应由研究人员确认

| Suggested dilution | Recommended dilution |
|--------------------|----------------------|
| WB | 1:1000 |
| IHC-P | 1:50-1:100 |
| FCM | 1:10-1:50 |

以下为常规应用缩写的中文注解

WB: 免疫印迹

ICC/IF: 细胞染色

IHC-P: 石蜡切片

IHC-Fr: 冰冻切片

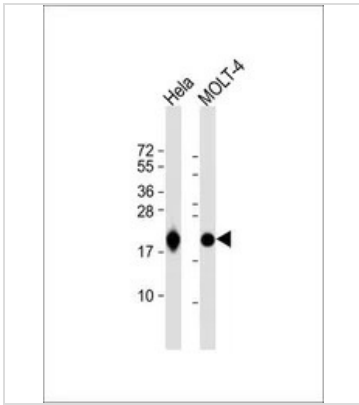
属性

| | |
|------|--|
| 形式 | Liquid |
| 存储溶液 | PBS |
| 保存剂 | 0.09% Sodium azide |
| 存放说明 | Store as concentrated solution. Centrifuge briefly prior to opening vial. For short-term storage (1-2 weeks), store at 4°C. For long-term storage, aliquot and store at -20°C or below. Avoid multiple freeze-thaw cycles. |
| 浓度 | Batch dependent (Please refer to the vial label for the specific concentration.) |
| 偶联 | Unconjugated |
| 注意事项 | 仅供实验室使用。不适用于人类或动物的任何临床, 治疗或诊断用途。不适合动物或人类食用。 |



For full product information, images and publications, please visit our [website](#).

產品圖片



GTX80536 WB Image

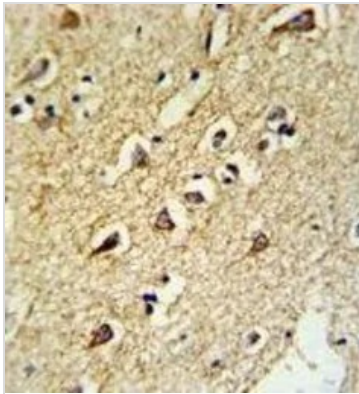
WB analysis of various samples using GTX80536 RPL18A antibody, C-term.

Lane 1: HeLa whole cell lysate

Lane 2: MOLT-4 whole cell lysate

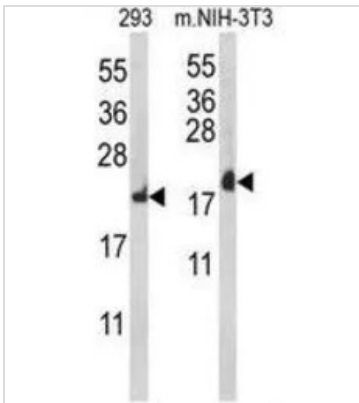
Loading : 20 µg per lane

Dilution : 1:1000



GTX80536 IHC-P Image

IHC-P analysis of human brain tissue using GTX80536 RPL18A antibody, C-term.



GTX80536 WB Image

WB analysis of 293 and NIH-3T3 cell lysate (35ug/lane) using GTX80536 RPL18A antibody, C-term.



For full product information, images and publications, please visit our [website](#).