

Wnt5a antibody [6F2]

Cat. No. GTX83127

宿主	Mouse
克隆	Monoclonal
同种型	IgG1
实验应用	WB, ICC/IF, IHC-P, IHC-Fr, ELISA
种属反应	Human, Rat

引用文献 (1)

实验应用

应用说明

*最佳稀释倍数与浓度应由研究人员确认

Suggested dilution	Recommended dilution
WB	1/500 - 1/2000
ICC/IF	1/200 - 1/1000
IHC-P	1/200 - 1/1000
IHC-Fr	Assay dependent
ELISA	1/10000

以下为常规应用缩写的中文注解

WB: 免疫印迹

ICC/IF: 细胞染色

IHC-P: 石蜡切片

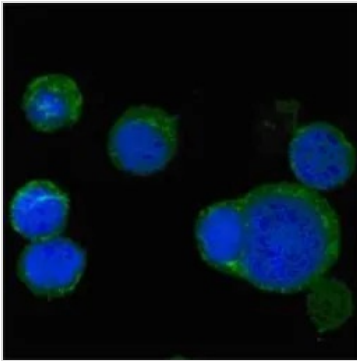
IHC-Fr: 冰冻切片

属性

形式	Liquid
存储溶液	Ascites
保存剂	0.03% Sodium azide
存放说明	Store as concentrated solution. Centrifuge briefly prior to opening vial. For short-term storage (1-2 weeks), store at 4°C. For long-term storage, aliquot and store at -20°C or below. Avoid multiple freeze-thaw cycles.
偶联	Unconjugated
注意事项	仅供实验室使用。不适用于人类或动物的任何临床, 治疗或诊断用途。不适合动物或人类食用。

For full product information, images and publications, please visit our [website](#).

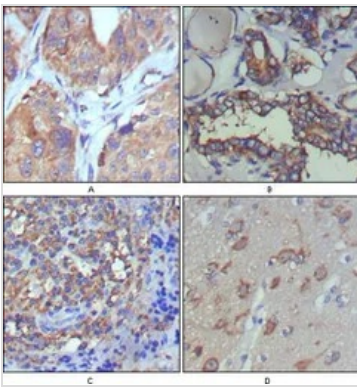
產品圖片

**GTX83127 ICC/IF Image**

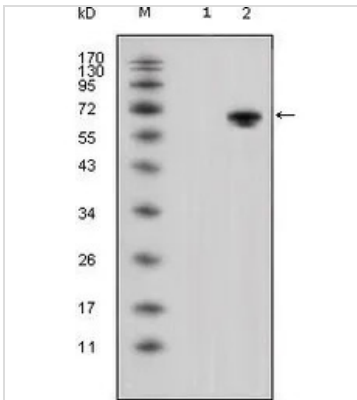
ICC/IF analysis of PC12 cells using GTX83127 WNT5A antibody [6F2].

Green : WNT5A

Blue: DRAQ5 fluorescent DNA dye

**GTX83127 IHC-P Image**

IHC-P analysis of human lung cancer (A), thyroid cancer (B), lymph node (C) and brain (D) using GTX83127 WNT5A antibody [6F2].

**GTX83127 WB Image**

WB analysis of HEK293 (1) and WNT5A-hlgFc transfected HEK293 cell lysate (2) using GTX83127 WNT5A antibody [6F2].



For full product information, images and publications, please visit our [website](#).