

## Pirh2 antibody [1H10]

**Cat. No. GTX83290**

宿主	Mouse
克隆	Monoclonal
同种型	IgG1
实验应用	WB, ICC/IF, IHC-P, FCM, ELISA
种属反应	Human, Rat

## 实验应用

## 应用说明

\*最佳稀释倍数与浓度应由研究人员确认

Suggested dilution	Recommended dilution
WB	1/500 - 1/2000
ICC/IF	1/200 - 1/1000
IHC-P	1/200 - 1/1000
FCM	1/200 - 1/400
ELISA	1/10000

以下为常规应用缩写的中文注解

WB: 免疫印迹

ICC/IF: 细胞染色

IHC-P: 石蜡切片

IHC-Fr: 冰冻切片

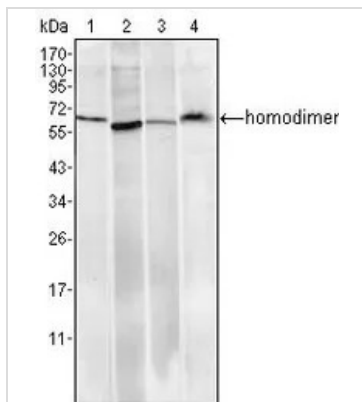
## 属性

形式	Liquid
存储溶液	Ascites
保存剂	0.03% Sodium azide
存放说明	Store as concentrated solution. Centrifuge briefly prior to opening vial. For short-term storage (1-2 weeks), store at 4°C. For long-term storage, aliquot and store at -20°C or below. Avoid multiple freeze-thaw cycles.
偶联	Unconjugated
注意事项	仅供实验室使用。不适用于人类或动物的任何临床, 治疗或诊断用途。不适合动物或人类食用。

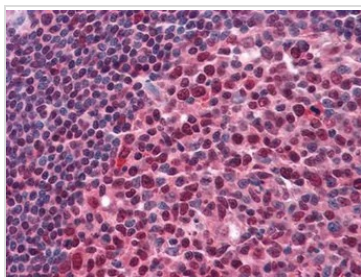


For full product information, images and publications, please visit our [website](#).

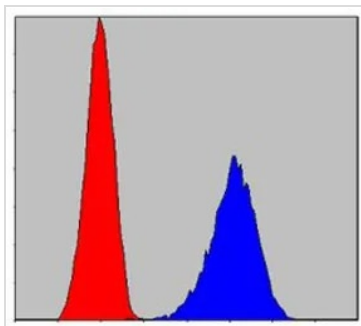
## 產品圖片

**GTX83290 WB Image**

WB analysis of HeLa (1), A549 (2), MCF-7 (3) and PC-12 (4) cell lysate using GTX83290 Pirh2 antibody [1H10].

**GTX83290 IHC-P Image**

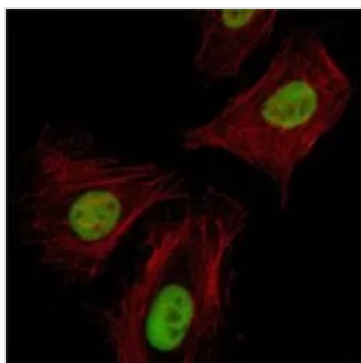
IHC-P analysis of human Tonsil tissue using GTX83290 Pirh2 antibody [1H10].

**GTX83290 FCM Image**

FACS analysis of PC-12 cells using GTX83290 Pirh2 antibody [1H10].

Blue : Pirh2

Red : negative control

**GTX83290 ICC/IF Image**

ICC/IF analysis of HeLa cells using GTX83290 Pirh2 antibody [1H10].

Green : Pirh2

Red: Actin filaments



For full product information, images and publications, please visit our [website](#).