

SOX17 antibody [3B10]

Cat. No. GTX83580

宿主	Mouse
克隆	Monoclonal
同种型	IgG1
实验应用	WB, ICC/IF, FCM
种属反应	Human, Mouse, Dog

引用文献 (11)

实验应用

应用说明

*最佳稀释倍数与浓度应由研究人员确认

Suggested dilution	Recommended dilution
WB	1:5000
ICC/IF	1:50-1:100
FCM	1:100

以下为常规应用缩写的中文注解

WB: 免疫印迹

ICC/IF: 细胞染色

IHC-P: 石蜡切片

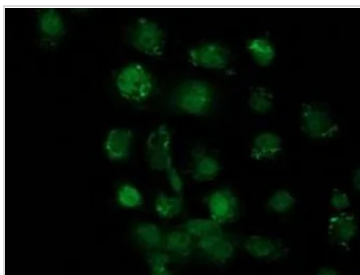
IHC-Fr: 冰冻切片

属性

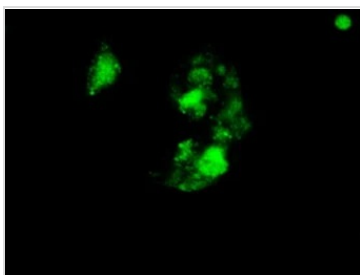
形式	Liquid
存储溶液	PBS, 1% BSA, 50% Glycerol
保存剂	0.02% Sodium azide
存放说明	Store as concentrated solution. Centrifuge briefly prior to opening vial. For short-term storage (1-2 weeks), store at 4°C. For long-term storage, aliquot and store at -20°C or below. Avoid multiple freeze-thaw cycles.
浓度	1 mg/ml (Please refer to the vial label for the specific concentration.)
偶联	Unconjugated
注意事项	仅供实验室使用。不适用于人类或动物的任何临床, 治疗或诊断用途。不适合动物或人类食用。

For full product information, images and publications, please visit our [website](#).

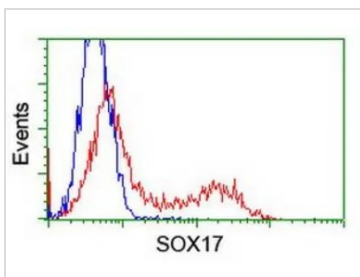
產品圖片

**GTX83580 ICC/IF Image**

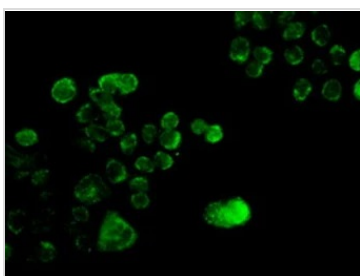
ICC/IF analysis of COS7 cells transiently transfected with SOX17 plasmid using GTX83580 SOX17 antibody [3B10].

**GTX83580 ICC/IF Image**

ICC/IF analysis of HepG2 cells using GTX83580 SOX17 antibody [3B10].

**GTX83580 FCM Image**

FACS analysis of HEK293T cells transfected with either SOX17 plasmid(Red) or empty vector control plasmid(Blue) using GTX83580 SOX17 antibody [3B10].

**GTX83580 ICC/IF Image**

ICC/IF analysis of HT29 cells using GTX83580 SOX17 antibody [3B10].



For full product information, images and publications, please visit our [website](#).