

L1CAM antibody [1H3]

Cat. No. GTX84244

宿主	Mouse
克隆	Monoclonal
同种型	IgG1
实验应用	WB, ICC/IF, FCM, IP
种属反应	Human

实验应用

应用说明

*最佳稀释倍数与浓度应由研究人员确认

Suggested dilution	Recommended dilution
WB	1:500-1:1000
ICC/IF	1:100
FCM	1:100
IP	2-4ug/mg

以下为常规应用缩写的中文注解

WB: 免疫印迹

ICC/IF: 细胞染色

IHC-P: 石蜡切片

IHC-Fr: 冰冻切片

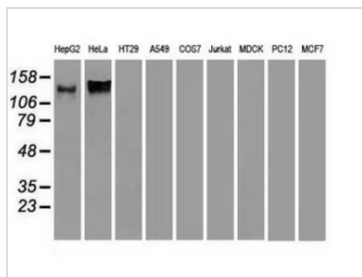
属性

形式	Liquid
存储溶液	PBS, 1% BSA, 50% Glycerol
保存剂	0.02% Sodium azide
存放说明	Store as concentrated solution. Centrifuge briefly prior to opening vial. For short-term storage (1-2 weeks), store at 4°C. For long-term storage, aliquot and store at -20°C or below. Avoid multiple freeze-thaw cycles.
浓度	1 mg/ml (Please refer to the vial label for the specific concentration.)
偶联	Unconjugated
注意事项	仅供实验室使用。不适用于人类或动物的任何临床、治疗或诊断用途。不适合动物或人类食用。



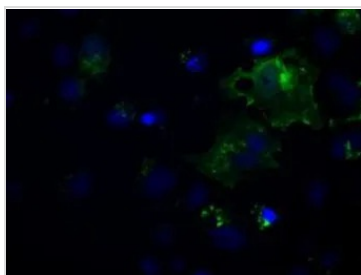
For full product information, images and publications, please visit our [website](#).

產品圖片



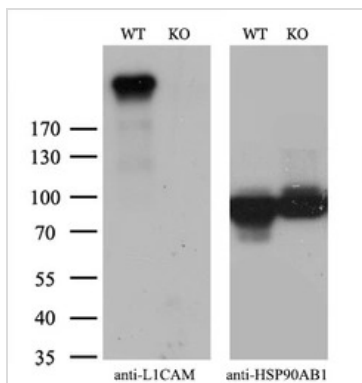
GTX84244 WB Image

WB analysis of various cell lines using GTX84244 L1CAM antibody [1H3].
Loading : 35 ug per lane



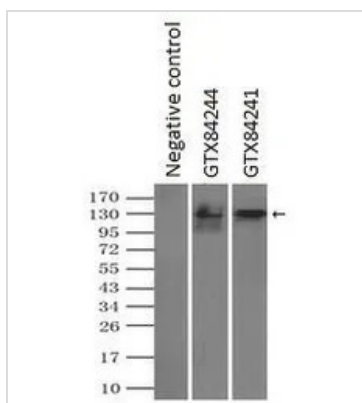
GTX84244 ICC/IF Image

ICC/IF analysis of COS7 cells transiently transfected with L1CAM plasmid using GTX84244 L1CAM antibody [1H3].



GTX84244 WB Image

WB analysis of wild type and L1CAM knock out HeLa cell lysate(10µg per lane) using GTX84244 L1CAM antibody [1H3].
Dilution : 1:1000



GTX84244 IP Image

IP analysis of DDDDK tagged L1CAM overexpressed HEK293T lysate using GTX84244 L1CAM antibody [1H3].After extensive wash to remove any non-specific binding, the immuno-precipitated products were analyzed with rabbit anti-DDDDK polyclonal antibody.
IP reaction : 2µg antibody / 500µl cell lysate



For full product information, images and publications, please visit our [website](#).