

## MMP23 (cleaved Tyr79) antibody

**Cat. No. GTX86949**

|      |            |
|------|------------|
| 宿主   | Rabbit     |
| 克隆   | Polyclonal |
| 同种型  | IgG        |
| 实验应用 | WB         |
| 种属反应 | Human      |

## 实验应用

## 应用说明

\*最佳稀释倍数与浓度应由研究人员确认

| Suggested dilution | Recommended dilution |
|--------------------|----------------------|
| WB                 | 1:500~1:1000         |

以下为常规应用缩写的中文注解

WB: 免疫印迹

ICC/IF: 细胞染色

IHC-P: 石蜡切片

IHC-Fr: 冰冻切片

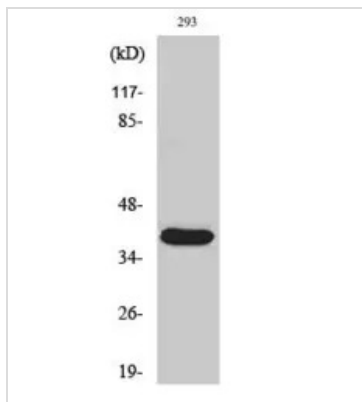
## 属性

|      |  |
|------|--|
| 形式   | Liquid   |
| 存储溶液 | PBS, 150mM NaCl, 50% Glycerol  |
| 保存剂  | 0.02% Sodium azide   |
| 存放说明 | Store as concentrated solution. Centrifuge briefly prior to opening vial. For short-term storage (1-2 weeks), store at 4°C. For long-term storage, aliquot and store at -20°C or below. Avoid multiple freeze-thaw cycles. |
| 浓度   | Batch dependent (Please refer to the vial label for the specific concentration.)   |
| 偶联   | Unconjugated   |
| 注意事项 | For laboratory use only. Not for any clinical, therapeutic, or diagnostic use in humans or animals. Not for animal or human consumption.   |



For full product information, images and publications, please visit our [website](#).

## 產品圖片

**GTX86949 WB Image**

WB analysis of 293 cells treated with etoposide using GTX86949 MMP23 (cleaved Tyr79) antibody.



For full product information, images and publications, please visit our [website](#).