

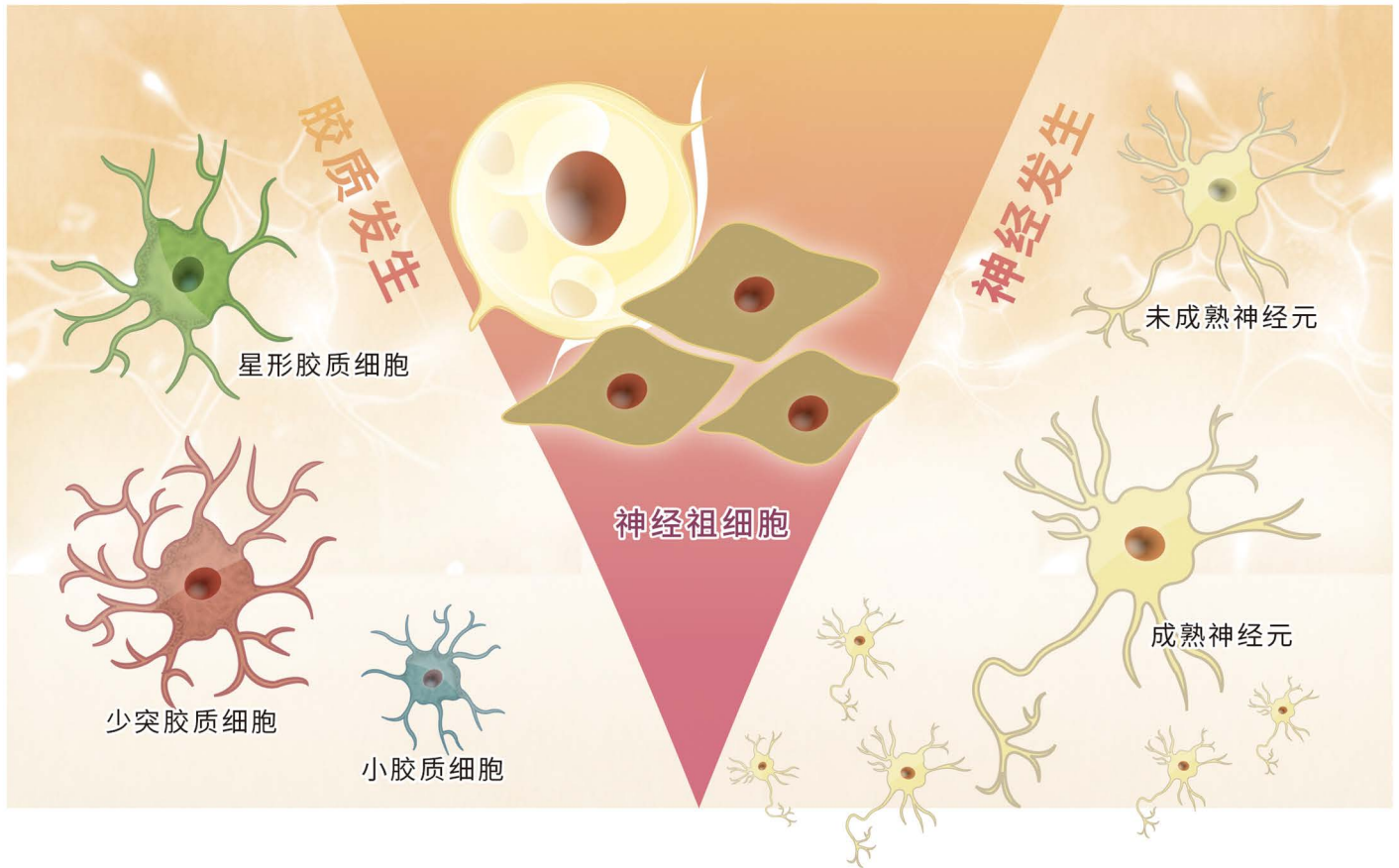
神经标记物

Your Expertise

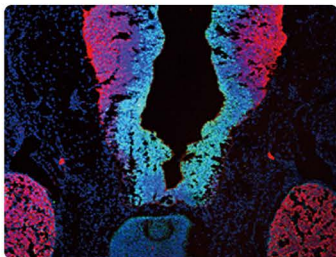
Our Antibodies

Accelerated Discovery

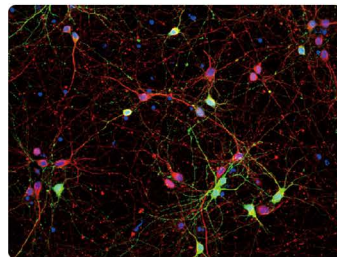
www.genetex.com



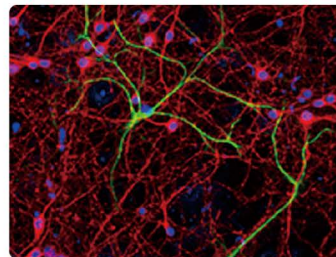
C 文献支持
K 基因敲除/敲弱
A 比较抗体策略
B 生物特性与正交策略
P 蛋白表达策略



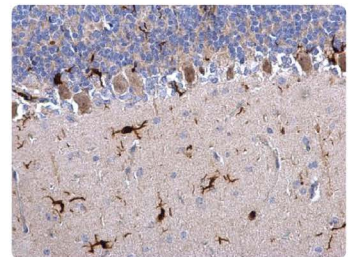
SOX2 antibody [N1C3] (GTX101507) C K A B



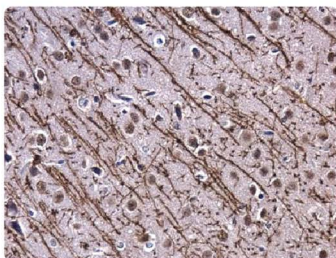
GABA antibody (GTX125988) C



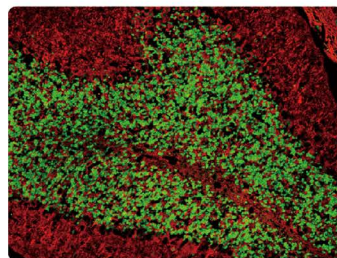
GFAP antibody (GTX108711) C B P



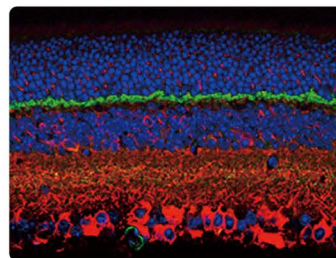
Iba1 antibody (GTX100042) C B



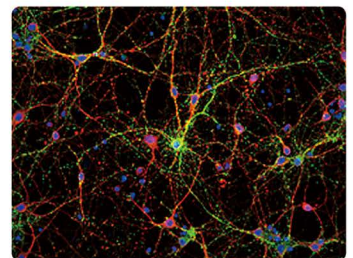
Myelin Basic Protein antibody (GTX133108) C



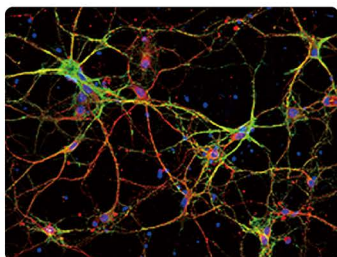
NeuN antibody (GTX132974) C



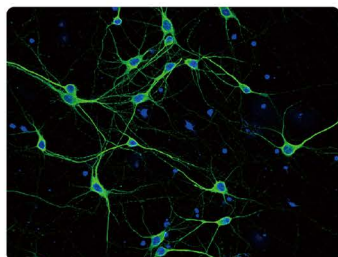
PSD95 antibody (GTX133091) C



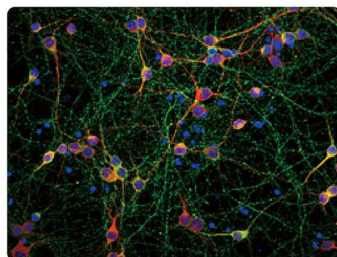
Synaptophysin antibody (GTX100865) C B



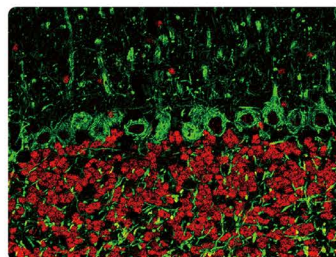
NCAM antibody (GTX133217)



MAP2 antibody (GTX133109)

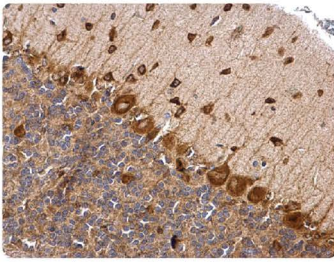


Tau antibody (GTX130462)

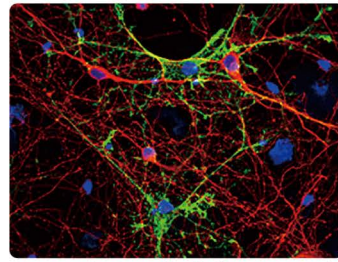


NF-H antibody [GT114] (GTX634289)

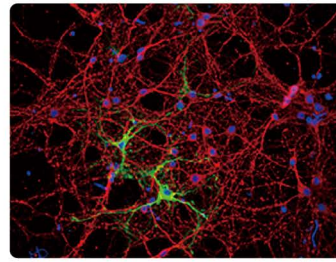
	目录号	产品名称	宿主与克隆		种属反应	应用
神经祖细胞	GTX129189	ASCL1 antibody	Rb pAb	Hu, Rat		IWB, ICC/IF, IHC-P
	GTX121467	FABP7 antibody [N1C3]	Rb pAb	Hu, Ms, Rat		WB, ICC/IF, IHC-Fr
	GTX633391	BRG1 antibody [GT2712]	Ms mAb	Hu, Ms, Rat		WB, ICC/IF, IHC-P, IHC-Fr
	GTX132121	BRG1 antibody	Rb pAb	Hu		WB, ICC/IF
	GTX114650	Brn2 antibody	Rb pAb	Hu, Ms, Rat, Chmp		WB, ICC/IF, IHC-P, IHC-Fr, IP, ChIP assay, IHC
	GTX133272	CASPR antibody	Rb pAb	Ms, Rat		WB, IHC-P
	GTX101540	Musashi 1 antibody [N3C3]	Rb pAb	Hu, Ms		WB, ICC/IF, IHC-Fr, IP
	GTX634485	Musashi 1 antibody [GT2377]	Ms mAb	Hu, Ms		WB
	GTX117808	Musashi 2 antibody [N1C1]	Rb pAb	Hu, Ms, Rat		WB, ICC/IF, IHC-P, IHC-Fr, IP
	GTX127345	N-Cadherin antibody	Rb pAb	Hu, Ms, Rat		WB, ICC/IF, IHC-P, IHC-Fr
	GTX82992	N-Cadherin antibody [5D5]	Ms mAb	Hu, Ms, Rat		WB, ICC/IF, IHC-P, FACS, ELISA
	GTX116066	Nestin antibody	Rb pAb	Hu, Rb		WB, ICC/IF
	GTX630201	Nestin antibody [GT623]	Ms mAb	Hu, Ms, Rat		WB, ICC/IF, IHC-P, IHC-Fr
	GTX114949	Occludin antibody	Rb pAb	Hu, Rat		WB, ICC/IF, IHC-P, IHC-Fr
	GTX634390	PAX3 antibody [GT1210]	Ms mAb	Hu		WB, IHC-P
	GTX113241	PAX6 antibody	Rb pAb	Hu, Ms, Rat		WB, ICC/IF, IHC-P, IHC-Fr, IP
	GTX59876	SOX1 antibody	Rb pAb	Hu, Ms, Rat		WB
	GTX627404	SOX2 antibody [GT1876]	Ms mAb	Hu, Ms, Rat, Zfsh		WB, IHC-Fr, FACS, IP
	GTX101507	SOX2 antibody [N1C3]	Rb pAb	Hu, Ms, Rat		WB, ICC/IF, IHC-P, IHC-Fr, FACS, IP
	未成熟神经元	GTX134052	Doublecortin antibody	Rb pAb	Hu, Ms, Rat	
GTX133217		NCAM antibody	Rb pAb	Ms, Rat		WB, ICC/IF, IHC-P
GTX634792		NCAM antibody [GT135]	Ms mAb	Hu, Ms, Rat		WB, ICC/IF, IHC-P
GTX134069		NeuroD1 antibody	Rb pAb	Hu, Ms, Rat		WB, ICC/IF, IHC-P
GTX101553		NSE antibody [N1C1]	Rb pAb	Hu, Ms, Rat		WB, IHC-P, IHC-Fr
GTX133249		NSE antibody	Rb pAb	Ms, Rat		WB, ICC/IF, IHC-P, IHC-Fr
GTX104707		Stathmin 1 antibody	Rb pAb	Hu, Ms, Rat		WB, ICC/IF, IHC-P, IHC-Fr
GTX133228		TBR1 antibody	Rb pAb	Ms, Rat		WB, ICC/IF, IHC-P
GTX30195		alpha Internexin antibody	Rb pAb	Hu, Ms, Rat		WB, ICC/IF, IP, IHC
GTX133356		alpha Internexin antibody	Rb pAb	Ms, Rat		WB, ICC/IF, IHC-P, IHC-Fr
成熟神经元	GTX631836	beta Tubulin 3/ Tuj1 antibody [GT11710]	Ms mAb	Hu, Ms, Rat		WB, ICC/IF, IHC-P, IHC-Fr, IP
	GTX130245	beta Tubulin 3/ Tuj1 antibody	Rb pAb	Hu, Ms, Rat		WB, ICC/IF, IHC-P, IHC-Fr, IP
	GTX127937	GAP43 antibody	Rb pAb	Hu, Ms, Rat		WB, ICC/IF, IHC-P, IHC-Fr
	GTX11267	MAP2 antibody [HM-2]	Ms mAb	Hu, Ms, Chk, Rat, Ql, Bov		WB, ICC/IF, IHC-P, IHC-Fr, IHC
	GTX634471	MAP2 antibody [GT378]	Ms mAb	Ms, Rat		WB, ICC/IF, IHC-P
	GTX133109	MAP2 antibody	Rb pAb	Ms, Rat		WB, ICC/IF, IHC-P, IHC-Fr
	GTX30773	NeuN antibody [2Q158]	Ms mAb	Hu, Ms, Rat, Frt, Slm, Crocodile		WB, ICC/IF, IHC-P, IHC-Fr
	GTX132974	NeuN antibody	Rb pAb	Ms, Rat		WB, ICC/IF, IHC-P, IHC-Fr
	GTX101142	NF-L antibody	Rb pAb	Hu, Ms, Rat		WB, ICC/IF, IHC-P, IHC-Fr, ELISA, sELISA
	GTX133218	NF-M antibody	Rb pAb	Ms, Rat		WB, ICC/IF, IHC-Fr
	GTX634483	NF-M antibody [GT883]	Ms mAb	Ms, Rat		WB, IHC-P, IHC-Fr, IHC
	GTX85461	NF-M antibody	Chk pAb	Hu, Ms, Rat		WB, ICC/IF, IHC
	GTX110065	NF-H antibody	Rb pAb	Hu, Ms, Rat		WB, ICC/IF, IHC-P, IHC-Fr
	GTX634289	NF-H antibody [GT114]	Ms mAb	Hu, Ms, Rat		WB, ICC/IF, IHC-P, IHC-Fr
	GTX133091	PSD95 antibody	Rb pAb	Hu, Ms, Rat		WB, ICC/IF, IHC-P, IHC-Fr
	GTX80682	PSD95 antibody [7E3-1B8]	Ms mAb	Hu, Ms, Rat, Zfsh, Rb, Bov, Chk, Mrsp, Xenopus, Primate		WB, ICC/IF, IHC-Fr, FACS, IP, IHC, Neut
	GTX100865	Synaptophysin antibody	Rb pAb	Hu, Ms, Rat		WB, ICC/IF, IHC-P, IHC-Fr
	GTX633972	Synaptophysin antibody [GT2589]	Ms mAb	Hu, Ms, Rat		WB, ICC/IF, IHC-P
	GTX130462	Tau antibody	Rb pAb	Hu, Ms, Rat		WB, ICC/IF, IHC-P, IHC-Fr, IHC
	GTX49353	Tau antibody	Chk pAb	Hu, Ms, Rat		WB, ICC/IF, IHC-Fr
GTX130456	Tau (phospho Ser198) antibody	Rb pAb	Hu, Ms, Rat		WB	
GTX24858	Tau (phospho Ser396) antibody	Rb pAb	Hu, Ms, Rat, Bov		WB, IHC-P, ELISA, IHC, Neutralizing/Blocking, IHC (Free Floating)	
GTX86147	Tau (phospho Ser422) antibody	Rb pAb	Hu, Ms		WB, IHC-P	



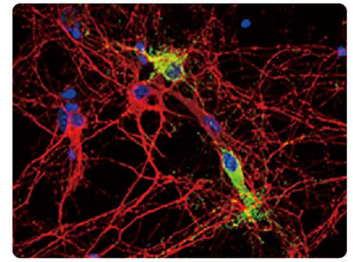
Musashi 2 antibody [N1C1]
(GTX117808)



Aquaporin 4 antibody (GTX133151)

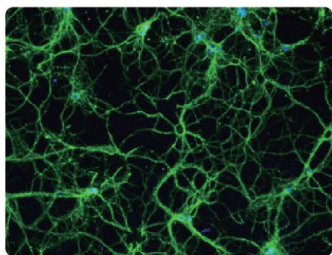





Glutamine synthetase antibody
(GTX109121)

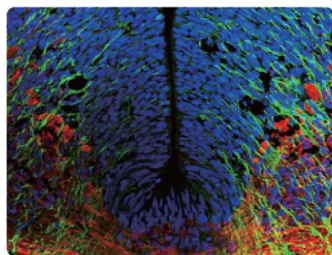



MOG antibody [C2C3], C-term
(GTX106283)

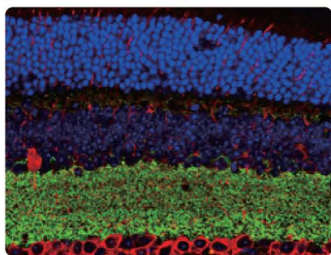
	目录号	产品名称	宿主与克隆	种属反应	应用
中间神经元	GTX130856	Calbindin antibody	Rb pAb	Hu, Ms, Rat	WB, ICC/IF, IHC-P, IHC-Fr
	GTX103261	Calretinin antibody	Rb pAb	Hu, Ms, Rat	WB, ICC/IF, IHC-P, IHC-Fr
	GTX134110	Parvalbumin antibody	Rb pAb	Ms, Rat	WB, IHC-Fr
	GTX133119	Somatostatin antibody	Rb pAb	Ms, Rat	ICC/IF, IHC-P, IHC-Fr
	GTX71935	Somatostatin antibody [SOM-018]	Ms mAb	Hu, Ms, Rat	ICC/IF, IHC-P, IHC-Fr, IHC
	GTX133138	Neuropeptide Y antibody	Rb pAb	Ms, Rat	IHC-P, IHC-Fr
	GTX10980	Neuropeptide Y antibody	Rb pAb	Hu, Ms, Pig, Rat, Shp	IHC-Fr, ELISA
	GTX133219	Nkx2.2 antibody	Rb pAb	Rat	WB, ICC/IF, IHC-Fr
	GTX31470	Nkx2.2 antibody	Rb pAb	Hu, Ms, Rat	WB, IHC-P, ELISA
	GTX129461	VIP antibody	Rb pAb	Hu, Ms, Rat	WB, ICC/IF, IHC-P, IHC-Fr
小胶质细胞	GTX76060	CD11b antibody [OX-42]	Ms mAb	Rat	ICC/IF, IHC-P, IHC-Fr, FACS, IP
	GTX134493	CD11b antibody	Rb pAb	Ms, Rat	WB, IHC-P
	GTX134007	C1qA antibody	Rb pAb	Hu, Ms, Rat	WB, ICC/IF, IHC-P
	GTX628507	CD45 antibody [GT0014]	Ms mAb	Hu	WB, ICC/IF, FACS
	GTX116018	CD45 antibody	Rb pAb	Hu, Ms, Rat, Rb	WB, ICC/IF, FACS
	GTX26640	F4/80 antibody [CI:A3-1]	Rat mAb	Hu, Ms	WB, ICC/IF, IHC-P, IHC-Fr, FACS, IP, EM, IHC-R, IHC, RIA
	GTX101895	F4/80 antibody [C2C3], C-term	Rb pAb	Hu, Ms, Rat	WB, IHC-P
	GTX100042	Iba1 antibody	Rb pAb	Hu, Ms, Rat	WB, ICC/IF, IHC-P, IHC-Fr, FACS, IHC
	GTX632426	Iba1 antibody [GT10312]	Ms mAb	Hu, Ms, Rat	WB, ICC/IF, IHC-P, FACS
	GTX134087	TMEM119 antibody	Rb pAb	Ms	IHC-P, IHC-Fr
少突胶质细胞	GTX130246	iNOS antibody	Rb pAb	Hu, Ms, Rat	WB, ICC/IF, IHC-P
	GTX60599	iNOS antibody [4E5]	Ms mAb	Hu, Ms, Rat	WB, IHC-P, FACS, ELISA
	GTX103954	CNPase antibody	Rb pAb	Hu, Ms, Rat	WB, IHC-P, IHC-Fr
	GTX72341	CNPase antibody [11-5B]	Ms mAb	Hu, Ms, Dog, Mk, Pig, Rat, Cat, Goat, Rb, Shp, Bov	WB, ICC/IF, IHC-P, IHC
	GTX114542	MAG antibody	Rb pAb	Hu, Ms, Rat	WB, IHC-P, IHC-Fr
	GTX133108	Myelin basic Protein antibody	Rb pAb	Hu, Ms, Rat	WB, IHC-P, IHC-Fr, IHC
	GTX634292	Myelin basic Protein antibody [GT3412]	Ms mAb	Ms, Rat	WB, IHC-P, IHC-Fr
	GTX106283	MOG antibody [C2C3], C-term	Rb pAb	Ms, Rat	WB, ICC/IF, IHC-Fr
	GTX104823	OLIG1 antibody [C2C3], C-term	Rb pAb	Hu, Ms, Rat	WB, ICC/IF, IHC-Fr
	GTX132732	OLIG2 antibody	Rb pAb	Hu, Ms, Pig, Rat	WB, ICC/IF, IHC-P, IHC-Fr
星形胶质细胞	GTX114599	OMG antibody	Rb pAb	Hu, Ms, Rat	WB, IHC-P
	GTX128699	Olig2 antibody	Rb pAb	Zfsh	WB
	GTX131047	ALDH1L1 antibody	Rb pAb	Ms, Rat	WB, IHC-Fr
	GTX84892	ALDH1L1 antibody [5G8]	Ms mAb	Hu, Dog	WB, ICC/IF, IHC-P, FACS
	GTX102284	Aldolase C antibody [N1C1]	Rb pAb	Hu, Ms, Rat	WB, IHC-Fr
	GTX133151	Aquaporin 4 antibody	Rb pAb	Ms, Rat	WB, ICC/IF, IHC-P, IHC-Fr
	GTX106424	Coronin 1A antibody [C3], C-term	Rb pAb	Hu, Ms, Rat	WB, ICC/IF, IHC-P, IHC-Fr
	GTX106469	Coronin 1C antibody [C3], C-term	Rb pAb	Hu, Ms	WB, ICC/IF, IHC-P
	GTX134059	EAAT1 antibody	Rb pAb	Hu, Ms, Rat	WB, IHC-P, IHC-Fr
	GTX134060	EAAT1 antibody	Rb pAb	Ms, Rat	WB, ICC/IF, IHC-P, IHC-Fr
星形胶质细胞	GTX20262	EAAT1 antibody	Rb pAb	Hu, Ms, Rat, Bov	WB, ICC/IF, IHC-P, IHC-Fr, FACS, ELISA
	GTX134062	EAAT2 antibody	Rb pAb	Ms, Rat	WB, IHC-P
	GTX128741	Gfap antibody	Rb pAb	Zfsh	WB, IHC-Fr, IHC-Wm
	GTX108711	GFAP antibody	Rb pAb	Hu, Ms, Rat	WB, ICC/IF, IHC-P, IHC-Fr, IHC
	GTX109121	Glutamine synthetase antibody	Rb pAb	Hu, Ms, Rat	WB, ICC/IF, IHC-P, IHC-Fr, IP
	GTX630654	Glutamine synthetase antibody [GT1055]	Ms mAb	Hu, Ms, Rat	WB, ICC/IF, IHC-P, IHC-Fr
	GTX100454	IGFBP3 antibody [N2C3]	Rb pAb	Hu, Ms, Rat	WB, IHC-Fr
	GTX10733	IGFBP3 antibody [84728.111]	Ms mAb	Hu	WB, IHC-P, ELISA, IHC
	GTX129573	S100 beta antibody	Rb pAb	Hu, Ms, Rat, Squirrel	WB, ICC/IF, IHC-P, IHC-Fr
	GTX11179	S100 beta antibody [SH-B4]	Ms mAb	Hu, Dog, Pig, Rat, Cat, Goat, Rb, Shp, Bov	WB, ICC/IF, IHC-P, IHC-Fr, ELISA





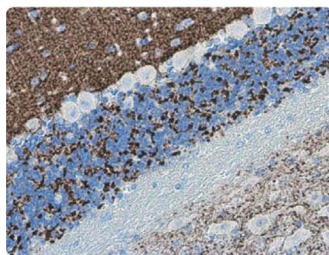
beta Tubulin 3/ Tuj1 antibody
[GT11710] (GTX631836)   

































GAD65 antibody (GTX133096)




VGAT antibody [N1N2], N-term
(GTX101908)  



VGLuT1 antibody (GTX133148)


	目录号	产品名称	宿主与克隆	种属反应	应用
胆碱能神经元	 GTX113653	AChR alpha 4 antibody [N1C1]	Rb pAb	Hu, Hamster	WB, IHC-P
	 GTX113654	AChR beta 2 antibody [N1C1]	Rb pAb	Ms, Rat	WB, IHC-P
	 GTX111637	mAChR M3 antibody	Rb pAb	Hu, Ms	WB, ICC/IF, IHC-Fr, FACS
	 GTX113164	Choline Acetyltransferase antibody [N1N3]	Rb pAb	Hu, Ms, Rat	IWB, ICC/IF, IHC-P, IHC-Fr
	 GTX133251	Vesicular Acetylcholine Transporter antibody	Rb pAb	Ms	WB, IHC-P, IHC-Fr
多巴胺能神经元	GTX133350	DARPP-32 antibody	Rb pAb	Ms, Rat	WB, ICC/IF, IHC-P, IHC-Fr
	GTX55025	DARPP-32 (phospho Thr34) antibody	Rb pAb	Hu, Ms, Rat	WB, ICC/IF, IHC-P
	 GTX133152	Dopamine Transporter antibody	Rb pAb	Ms, Rat, Zfsh	WB, ICC/IF, IHC-P
	 GTX101616	Dopamine beta Hydroxylase antibody	Rb pAb	Hu, Ms, Rat	WB, IHC-P
	 GTX100309	FOXA2 antibody	Rb pAb	Hu, Ms	WB, ICC/IF, IHC-Fr
	 GTX84485	FOXA2 antibody [3C10]	Rb pAb	Hu, Ms	WB, ICC/IF, IHC-P, FACS
	GTX129831	LMX1B antibody	Rb pAb	Ms, Rat	WB, IHC-Fr
	GTX133225	Nurr1 antibody	Rb pAb	Ms, Rat	WB
	GTX114045	Nurr1 antibody	Rb pAb	Hu	ICC/IF
	 GTX102424	Tyrosine Hydroxylase antibody [N1C1]	Rb pAb	Hu, Ms, Rat, Zfsh	WB, ICC/IF, IHC-P, IHC-Fr, IHC-Wm
	 GTX113016	Tyrosine Hydroxylase antibody	Rb pAb	Hu, Ms, Rat, Vole, Calf	WB, ICC/IF, IHC-P, IHC-Fr
GTX634481	Tyrosine Hydroxylase antibody [GT234]	Ms mAb	Ms, Rat	WB, IHC-P	
 GTX10372	Tyrosine Hydroxylase antibody [185]	Ms mAb	Hu, Ms, Rat	WB, ICC/IF, IHC-P, IHC-Fr	
r-氨基酸神经元	 GTX125988	GABA antibody	Rb pAb	Hu, Ms, Dm, Rat	ICC/IF, IHC-P, IHC-Fr, Dot, IHC
	 GTX133150	GABA Transporter 1 / GAT1 antibody	Rb pAb	Ms, Rat	WB, ICC/IF, IHC-P, IHC-Fr
	 GTX100281	GAD65 antibody [C2C3], C-term	Rb pAb	Ms, Rat	WB, ICC/IF, IHC-P, IHC-Fr
	 GTX133096	GAD65 antibody	Rb pAb	Hu, Rat	WB, IHC-Fr
	GTX133156	GAD65 antibody	Rb pAb	Ms, Rat	WB, IHC-P
	 GTX101881	GAD67 antibody	Rb pAb	Hu, Ms, Rat	WB, ICC/IF, IHC-P, IHC-Fr, IHC
	 GTX633816	GAD67 antibody [GT1982]	Ms mAb	Ms, Rat	WB, IHC-P
	 GTX101908	VGAT antibody [N1N2], N-term	Rb pAb	Hu, Ms, Rat	WB, ICC/IF, IHC-P, IHC-Fr
谷氨酸能神经元	 GTX131263	Glutaminase C antibody	Rb pAb	Hu, Ms	WB, ICC/IF, IHC-P, IP
	GTX632317	Glutaminase C antibody [GT3211]	Ms mAb	Hu, Ms	WB, ICC/IF, IHC-P
	 GTX109121	Glutamine synthetase antibody	Rb pAb	Hu, Ms, Rat	WB, ICC/IF, IHC-P, IHC-Fr, IP
	 GTX630654	Glutamine synthetase antibody [GT1055]	Ms mAb	Hu, Ms, Rat	WB, ICC/IF, IHC-P, IHC-Fr
	 GTX133148	vGLuT1 antibody	Rb pAb	Ms, Rat	WB, ICC/IF, IHC-P, IHC-Fr
	GTX133142	vGLuT2 antibody	Rb pAb	Ms, Rat	WB, ICC/IF, IHC-Fr
	GTX134103	vGluT3 antibody	Rb pAb	Ms, Rat	WB, ICC/IF
	GTX133267	vGluT3 antibody	Rb pAb	Ms	IHC-P
	 GTX133097	NMDAR1 antibody	Rb pAb	Ms, Rat, Dog	WB, ICC/IF, IHC-P, IHC-Fr
	GTX50168	NMDAR1 (phospho Ser896) antibody	Rb pAb	Ms	WB
	 GTX103558	NMDAR2A antibody	Rb pAb	Hu, Ms, Rat	WB, ICC/IF, IHC-P
	 GTX109713	NMDAR2B antibody [C2C3], C-term	Rb pAb	Hu, Ms, Rat	WB, ICC/IF
	GTX130184	NMDAR2B antibody	Rb pAb	Ms, Rat	WB, ICC/IF, IHC-P
 GTX130183	NMDAR2B (phospho Tyr1472) antibody	Rb pAb	Ms, Rat	WB	
血清神经元	 GTX31099	Serotonin antibody [5-HT-H209]	Ms mAb	Hu, Ms, Chk, Pig, RMK	ICC/IF, IHC-P, IHC-Fr, IHC
	GTX133101	Serotonin Transporter antibody	Rb pAb	Rat	WB, ICC/IF
	GTX31103	Serotonin Transporter antibody, Internal	Gt pAb	Hu, Rat	WB, ICC/IF
	 GTX109027	TPH1 antibody	Rb pAb	Hu	WB, ICC/IF
	GTX101962	TPH2 antibody [N3C3]	Rb pAb	Hu, Ms, Rat	WB, ICC/IF