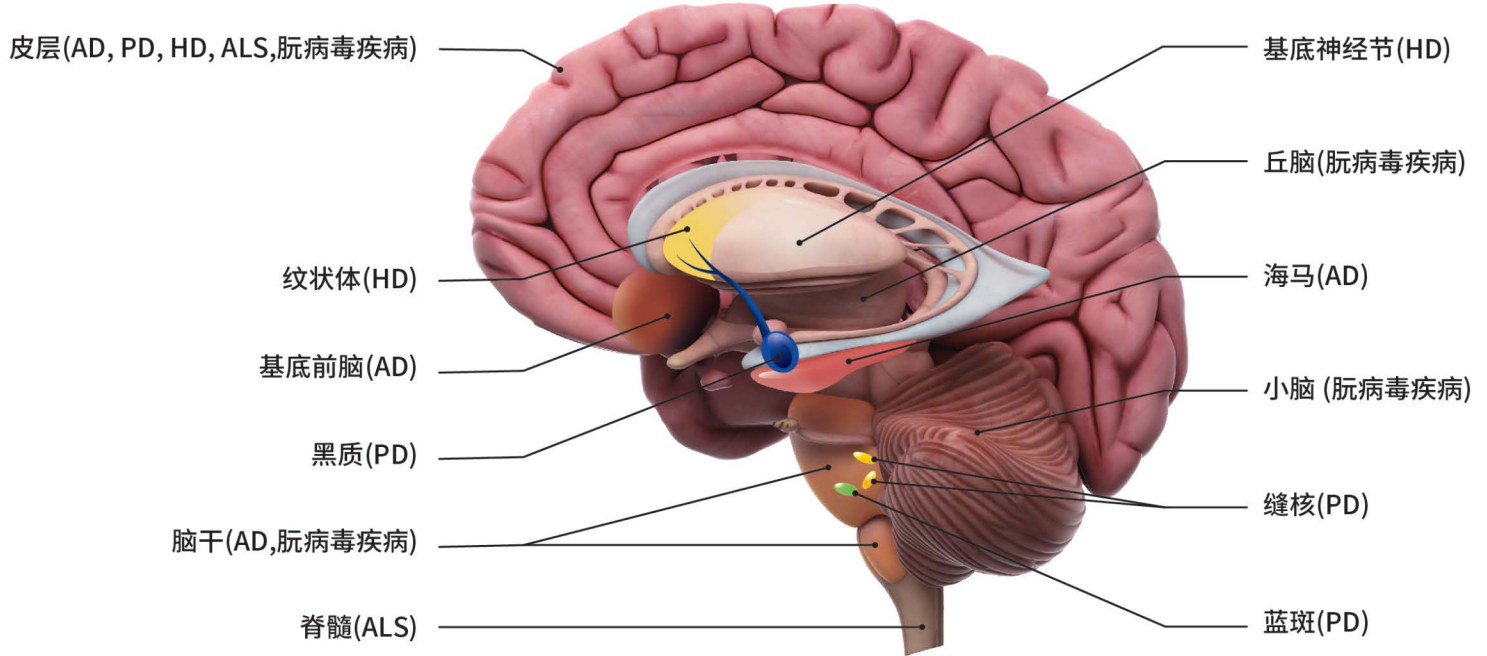


神经退行性疾病

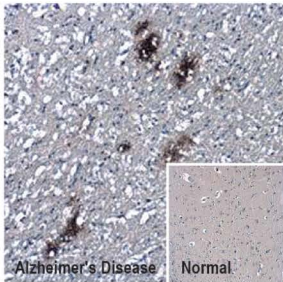
- Your Expertise
- Our Antibodies
- Accelerated Discovery

www.genetex.com

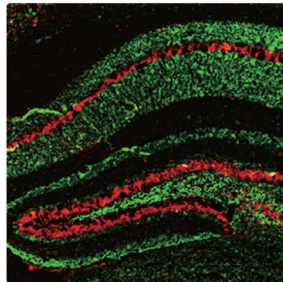


热门指标

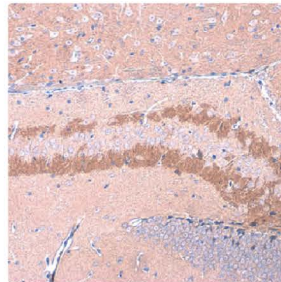
- 文献支持
- 基因敲除/敲弱
- 比较抗体策略
- 蛋白表达策略



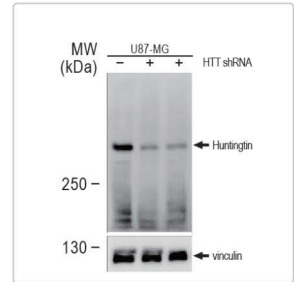
beta Amyloid (1-42) antibody – Conformation Specific (GTX134510)



alpha Synuclein antibody (GTX133367)



C9orf72 antibody [GT779] (GTX632041)



Huntingtin antibody (GTX132433)

疾病	聚集类性	亚细胞定位	受影响的蛋白质	受影响的大脑区域
阿尔茨海默氏病 (AD)	神经斑 神经纤维	细胞外 细胞内	淀粉样β肽 过度磷酸化的tau	皮层、海马、基底前脑、脑干
帕金森氏病 (PD)	路易体	细胞内 (细胞质)	α-突触核蛋白	黑质、皮层、蓝斑、 缝核(多巴胺能神经元)
亨廷顿氏病(HD)	细胞内包涵体 与细胞质聚集	细胞内	扩展且重复聚谷氨酸 的亨廷顿蛋白	纹状体、基底神经节、皮层和其他
肌萎缩性侧索硬化 (ALS)	博尼纳体与轴突球	细胞内 (细胞质)	各种ALS基因	脊髓运动神经元和运动皮层
朊病毒疾病	淀粉样斑	细胞内与细胞外	朊蛋白	皮层、脑干、丘脑、小脑和其他

目录号	产品名称	宿主与克隆	种属反应	应用	
	GTX134510	beta Amyloid (1-42) antibody – Conformation Specific	Rb pAb Hu	Dot, IHC-P, ELISA	
		GTX635160	Beta amyloid (1-42) antibody – Conformation Specific antibody [GT622]	Ms mAb Hu, Ms	IHC-P, Dot, ELISA
β-淀粉样前蛋白 &β-淀粉样蛋白		GTX60998	beta Amyloid (1-42) antibody	Rb pAb Hu, Rat	ELISA, IHC-P
		GTX112677	APP antibody	Rb pAb Hu, Ms, Rat	WB, ICC/IF, IHC-P, ELISA
α分泌酶		GTX130081	ADAM9 antibody	Rb pAb Hu, Ms	WB
		GTX104940	ADAM10 antibody [N2C1], Internal	Rb pAb Hu	WB, IHC-P
		GTX101358	ADAM17 antibody [C2C3], C-term	Rb pAb Hu, Ms, Rat	WB, IHC-P
		GTX64665	ADAM19 antibody	Rb pAb Hu, Ms, Rat	WB
β分泌酶		GTX17545	BACE1 antibody	Rb pAb Hu, Ms	WB, ICC/IF, IHC-P, ELISA
		GTX113951	BACE2 antibody [C1C3]	Rb pAb Hu, Rat	WB, ICC/IF, IHC-P
γ分泌酶		GTX115930	Nicastrin antibody	Rb pAb Hu	WB, ICC/IF
		GTX85063	PEN2 antibody	Rb pAb Hu, Ms, Rat	WB, ELISA, IHC-P
		GTX116016	Presenilin 1 antibody [C1C2], Internal	Rb pAb Hu, Ms	WB, ICC/IF, IHC-P
分泌酶		GTX134724	Cathepsin B antibody	Rb pAb Hu	WB
		GTX52577	Cathepsin B antibody [1J37]	Ms mAb Hu	WB
		GTX112847	Cathepsin D antibody [N2C2], Internal	Rb pAb Hu	WB
		GTX103988	Cathepsin S antibody	Rb pAb Hu, Rat	WB, IHC-P
		GTX114350	Cathepsin S antibody	Rb pAb Hu	WB, ICC/IF, IHC-P
β-淀粉样前蛋白 降解酶		GTX100923	ACE antibody	Rb pAb Hu, Ms, Rat	WB
		GTX111680	CD10 antibody [N2C1], Internal	Rb pAb Hu, Ms, Rat	WB, IHC-P
		GTX54043	ECE1 antibody	Rb pAb Hu, Ms, Rat	WB
		GTX111664	IDE antibody [N3C1], Internal	Rb pAb Hu, Ms, Rat	WB, ICC/IF, IHC-P
		GTX633625	IDE antibody [GT286]	Ms mAb Hu, Ms, Rat	WB, IHC-P
		GTX104577	MMP2 antibody	Rb pAb Hu, Ms	WB, ICC/IF, IHC-P, IP
		GTX634832	MMP2 antibody [GT185]	Ms mAb Hu	WB
		GTX100458	MMP9 antibody [N2C1], Internal	Rb pAb Hu, Bov	WB, ICC/IF, IHC-P
		GTX102340	Calpain 1 antibody [N3C2], Internal	Rb pAb Hu, Ms, Squirrel	WB, ICC/IF, IHC-P, IP
		GTX102499	Calpain 2 antibody [N2C1], Internal	Rb pAb Hu, Ms	WB, FACS, ICC/IF, IHC-P
钙蛋白酶		GTX103453	tPA antibody	Rb pAb Hu, Ms, Rat	WB, IHC-P
		GTX100465	Urokinase antibody	Rb pAb Hu	WB, IHC-P
纤溶酶原系统		GTX130462	Tau antibody	Rb pAb Hu, Ms, Rat	WB, ICC/IF, IHC-P, IHC-Fr, IHC
		GTX634809	Tau antibody [GT287]	Ms mAb Ms, Rat	WB, ICC/IF
Tau蛋白		GTX130456	Tau (phospho Ser198) antibody	Rb pAb Hu, Ms, Rat	WB
		GTX24846	Tau (phospho Ser214) antibody	Rb pAb Hu, Ms, Rat, Dog	WB, ICC/IF, IHC-P, FACS, IP, ELISA, IHC
		GTX50175	Tau (phospho Ser262) antibody	Rb pAb Hu, Ms, Rat, Bov, Dog	WB, IHC-P, FACS, ELISA, IHC, IHC (Free Floating)
		GTX24858	Tau (phospho Ser396) antibody	Rb pAb Hu, Ms, Rat, Bov	WB, IHC-P, ELISA, IHC, Neutralizing/Blocking, IHC (Free Floating)
		GTX86147	Tau (phospho Ser422) antibody	Rb pAb Hu, Ms	WB, IHC-P
CDK蛋白 与调节因子		GTX108328	CDK5 antibody [C2C3], C-term	Rb pAb Hu, Ms, Rat	WB, ICC/IF, IHC, IHC-P
		GTX130416	CDK5 (phospho Tyr15) antibody	Rb pAb Hu	WB
		GTX60441	CDK5 antibody [4E4]	Ms mAb Hu, Mk, Rat	WB, ELISA, FACS, ICC/IF, IHC-P
其他相关蛋白		GTX133713	p35 antibody	Rb pAb Hu, Ms, Rat	WB, ICC/IF, IHC-P
		GTX100053	Apolipoprotein E antibody [C2C3], C-term	Rb pAb Hu	WB, ICC/IF, IHC-P, IP, ELISA
		GTX60446	Apolipoprotein E antibody [1H4]	Ms mAb Hu	WB, ELISA, FACS, IHC-P
		GTX110271	APBB2 antibody	Rb pAb Hu	WB, ICC/IF
		GTX109699	APBB3 antibody [N3C3]	Rb pAb Hu	WB, IHC-P
		GTX100301	ERAB antibody	Rb pAb Hu, Ms, Rat	WB, ICC/IF, IHC-P
		GTX129086	LRP1 (85kDa subunit) antibody	Rb pAb Hu	WB
		GTX64220	LRP1 antibody [GT1028]	Rb pAb Hu, Ms	WB, ICC/IF, IHC-P, FACS
		GTX103712	Seladin 1 antibody [N1C2]	Rb pAb Hu, Ms, Rat	WB, ICC/IF, IHC-P
		GTX119423	TRAK2 antibody [N1N2], N-term	Rb pAb Hu, Ms, Rat	WB
	GTX121628	TRAK2 antibody	Rb pAb Hu, Ms	WB, ICC/IF	

目录号	产品名称	宿主与克隆	种属反应	应用
GTX113098	alpha Tubulin 4a antibody	Rb pAb	Hu, Ms	WB, ICC/IF, IHC-P
GTX120076	ALS2CR12 antibody	Rb pAb	Hu	WB, ICC/IF, IHC-P
GTX130329	ATXN2 antibody	Rb pAb	Hu, Ms	WB, IHC-P
GTX119046	C21orf2 antibody [N1C2]	Rb pAb	Hu	WB, ICC/IF, IHC-P
GTX632041	C9orf72 antibody [GT779]	Ms mAb	Hu, Ms, Rat	WB, ICC/IF, IHC-P, IP
GTX100231	DCTN1 antibody [C3], C-term	Rb pAb	Hu, Ms, Rat	WB, ICC/IF, IHC-P
GTX110048	FIG4 antibody	Rb pAb	Hu	WB, ICC/IF, IHC-P
GTX125897	Galectin 3 antibody	Rb pAb	Hu, Ms, Rat	WB, ELISA, IHC-P
GTX635155	Galectin 3 antibody [GT12712]	Ms mAb	Hu	WB, ICC/IF, ELISA
GTX130498	Gemin 5 antibody	Rb pAb	Hu, Ms	WB, ICC/IF, IHC-P, IP
GTX101277	HMGB1 antibody	Rb pAb	Hu, Ms, Pig, Rat	WB, ICC/IF, IHC, IHC-P
GTX628835	HMGB1 antibody [GT348]	Ms mAb	Hu, Ms, Rat	WB, ICC/IF, IHC-Fr, IHC-P
GTX111069	HSC70 antibody [N2C1], Internal	Rb pAb	Hu, Ms	WB, ICC/IF, IHC-P
GTX113057	NAK antibody [N2C1], Internal	Rb pAb	Hu, Ms	WB, ICC/IF, IHC-P
GTX121116	NAK antibody [108A429]	Ms mAb	Human, Mouse, Rat, Bov, Dog	WB, ICC/IF, IHC-P
GTX30202	Sodium Potassium ATPase alpha 1 antibody [464.6(6H)]	Ms mAb	Hu, Ms, Dog, Dm, Pig, Rat, Yeast, Gpig, Primate, Rb, Bov, Xenopus	WB, ICC/IF, IHC-Fr, IHC-P, IP
GTX130828	Nek1 antibody	Rb pAb	Hu, Ms	WB, ICC/IF
GTX105447	Optineurin antibody	Rb pAb	Hu	WB, ICC/IF, IHC-P, IP
GTX132575	Optineurin antibody	Rb pAb	Hu, Ms	WB, ICC/IF, IHC-P
GTX102005	Peripherin antibody	Rb pAb	Hu	WB, IHC-P
GTX101047	SMN1 antibody	Rb pAb	Hu	WB, ICC/IF
GTX134791	SMN1 antibody	Rb pAb	Ms, Rat	WB
GTX100554	SOD1 antibody	Rb pAb	Hu, Ms, Rat, Bird	WB, ICC/IF, IHC-P, ELISA, sELISA
GTX83012	SOD1 antibody [6F5]	Ms mAb	Hu, Ms	WB, ICC/IF, FACS, ELISA
GTX100685	SQSTM1 / P62 antibody [N3C1], Internal	Rb pAb	Hu, Ms, Rat, Zfsh, Bov, Honeybee	WB, ICC/IF, IHC-P, FACS, IP
GTX629890	SQSTM1 / P62 antibody [GT1478]	Ms mAb	Hu, Ms	WB, ICC/IF, IHC-Fr, FACS
GTX128171	SQSTM1 / P62 (phospho Ser403) antibody	Rb pAb	Hu, Ms, Rat	WB, ICC/IF, IHC-P, FACS, IHC
GTX114210	TDP43 antibody	Rb pAb	Hu, Ms, Rat	WB, ICC/IF, IHC-P, IP, ChIP-seq
GTX630197	TDP43 antibody [GT733]	Ms mAb	Hu, Ms, Rat	WB, ICC/IF, IHC-P
GTX101089	VCP antibody	Rb pAb	Hu, Ms, Rat	WB, ICC/IF, IHC-P, IHC-Fr, IP

亨廷顿氏病

目录号	产品名称	宿主与克隆	种属反应	应用
GTX132433	Huntingtin antibody	Rb pAb	Hu, Rat	WB, ICC/IF, IHC-P
GTX31045	Huntingtin antibody [HDB4E10]	Ms mAb	Hu, Ms, Rb	WB, IHC-Fr, IP
GTX112099	CA150 antibody	Rb pAb	Hu, Ms, Rat	WB, ICC/IF, IHC-P
GTX131449	HIP1 antibody	Rb pAb	Hu, Ms, Rat	WB
GTX117072	HIP1R antibody [N1N2], N-term	Rb pAb	Hu, Rat	WB, ICC/IF, IHC-P
GTX114469	HIP2 antibody	Rb pAb	Hu, Ms	WB, ICC/IF
GTX114192	ZDHHC17 antibody	Rb pAb	Hu, Ms	WB
GTX106273	ZDHHC13 antibody [C3], C-term	Rb pAb	Hu	WB, ICC/IF
GTX84310	HIPPI antibody [4F6]	Ms mAb	Hu, Ms, Rat, Mk	WB, ICC/IF, IHC-P
GTX111125	HIPPI antibody [C1C3]	Rb pAb	Hu	WB, ICC/IF, IHC-P
GTX108567	PACSIN1 antibody	Rb pAb	Hu, Ms, Rat	WB, ICC/IF, IHC-P
GTX104204	PACSIN2 antibody [N2C3]	Rb pAb	Hu	WB, IHC-P
GTX66537	PACSIN3 antibody	Rb pAb	Hu, Ms, Rat	WB
GTX129144	REST antibody	Rb pAb	Hu	WB, IHC-P
GTX37363	REST antibody	Rb pAb	Hu, Ms, Rat, Zfsh	WB, IHC-P
GTX114758	SH3GL3 antibody	Rb pAb	Ms, Rat	WB, IHC-P
GTX129156	SIN3A antibody	Rb pAb	Hu, Ms, Rat	WB, ICC/IF, IHC-P, IP, ChIP assay
GTX110593	SP1 antibody	Rb pAb	Hu, Ms, Rat	WB, ICC/IF, IHC-P, IP, ChIP assay
GTX634352	SP1 antibody [GT2574]	Ms mAb	Hu	WB, ICC/IF, IHC-P
GTX50710	SP1 (phospho Thr739) antibody	Rb pAb	Hu, Ms, Rat	WB
GTX22731	Clathrin heavy chain antibody [X22]	Ms mAb	Hu, Ms, Dog, Rat, Hm, Primate, Bov	WB, Blocking, FACS, ICC/IF, IHC, IHC-Fr, IHC-P, IM, IP
GTX132976	Clathrin Heavy chain antibody	Rb pAb	Hu, Ms, Rat	WB, ICC/IF
GTX100231	DCTN1 antibody [C3], C-term	Rb pAb	Hu, Ms, Rat	WB, ICC/IF, IHC-P
GTX115435	DCTN2 antibody	Rb pAb	Hu	WB, ICC/IF, IHC-P
GTX134514	BDNF antibody	Rb pAb	Hu, Ms, Rat	WB, IHC-P
GTX115247	NPEPPS antibody [N3C2-2], Internal	Rb pAb	Hu, Ms	WB, ICC/IF
GTX630148	Ubiquitin antibody [GT7811]	Ms mAb	Hu, Ms, Rat	WB, IHC-P

	目录号	产品名称	宿主与克隆	种属反应	应用
PARK1 (α-突触核蛋白)	GTX112799	alpha Synuclein antibody	Rb pAb	Hu, Ms, Rat	WB, ICC/IF, IHC-Fr, IHC-P
	GTX21904	alpha Synuclein antibody [4B12]	Ms mAb	Hu	WB, Dot, ELISA, IHC, IHC-Fr, IHC-P
	GTX50284	alpha Synuclein (phospho Tyr125) antibody	Rb pAb	Hu, Ms	WB, ICC/IF
	GTX50222	alpha Synuclein (phospho Ser129) antibody	Rb pAb	Hu, Ms, Rat	WB, ICC/IF, IHC
	GTX50305	alpha Synuclein (phospho Tyr133) antibody	Rb pAb	Hu, Ms	WB, ICC/IF
	GTX50306	alpha Synuclein (phospho Tyr136) antibody	Rb pAb	Hu, Ms	WB, ICC/IF
PARK2 (Parkin蛋白)	GTX31927	Parkin antibody	Rb pAb	Hu	WB, ELISA, IHC-P
PARK5 (蛋白基因产物9.5)	GTX109637	PGP9.5 antibody	Rb pAb	Hu, Ms, Rat	WB, ICC/IF, IHC-Fr, IHC-P
	GTX634797	PGP9.5 antibody [GT448]	Ms mAb	Hu, Rat	WB, ICC/IF, IHC-P
	GTX10410	PGP9.5 antibody	Gp pAb	Hu, Ms, Mk, Rat	ICC/IF, IHC, IHC-Fr
PARK6 (PINK1蛋白)	GTX107851	PINK1 antibody [N3C3]	Rb pAb	Hu, Ms	WB, ICC/IF
PARK7 (DJ1蛋白)	GTX132574	Park7 / DJ-1 antibody	Rb pAb	Hu, Ms, Rat	WB, IHC-P
	GTX634831	Park7 / DJ-1 antibody [GT136]	Ms mAb	Hu, Ms, Rat	WB, ICC/IF
PARK8 (2型富亮氨酸重复激酶)	GTX113067	LRRK2 antibody [N3], Internal	Rb pAb	Hu, Ms	WB, ICC/IF, IHC-P
Parkin 底物	GTX23927	Cyclin E antibody [HE12]	Ms mAb	Hu, Ms	WB, IHC, IHC-P
	GTX103045	Cyclin E1 antibody	Rb pAb	Hu	WB, ICC/IF
	GTX50722	Cyclin E1 (phospho Thr395) antibody	Rb pAb	Hu	WB
	GTX118561	SEPT5 antibody [N3C3]	Rb pAb	Hu, Ms	WB, IHC-P
	GTX32905	SYT11 antibody	Rb pAb	Hu, Ms, Rat	WB, IHC-P
	GTX109676	STUB1 antibody [C1C3]	Rb pAb	Hu, Ms	WB, ICC/IF, IHC-P
	GTX122827	STUB1 antibody [N1C3]	Rb pAb	Hu, Ms, Rat	WB, IHC-P
其他相关蛋白	GTX115032	Ataxin 3 antibody	Rb pAb	Hu, Ms	WB, ICC/IF, IHC-P
	GTX123973	ALDH1A1 antibody	Rb pAb	Hu, Ms, Rat	WB, ICC/IF, IHC-P
	GTX101616	Dopamine beta Hydroxylase antibody	Rb pAb	Hu, Ms, Rat	WB, IHC-P
	GTX30448	DOPA Decarboxylase antibody	Rb pAb	Hu, Ms, Rat, Bov	WB, ICC/IF, IHC, IHC-Fr, IHC-P
	GTX134053	DOPA Decarboxylase antibody	Rb pAb	Ms, Rat	WB, ICC/IF, IHC-P, IHC-Fr
	GTX100354	Dopamine Receptor D1 antibody [C2C3], C-term	Rb pAb	Hu, Ms, Rat	WB, ICC/IF, IHC-P, IHC-Fr
	GTX110703	HTRA2 antibody	Rb pAb	Hu	WB, IHC-P
	GTX132456	HTRA2 antibody	Rb pAb	Hu	WB
	GTX133351	MFN1 antibody	Rb pAb	Hu, Ms, Rat	WB, IHC-P
	GTX134774	MFN2 antibody	Rb pAb	Hu, Ms	WB
	GTX102055	MFN2 antibody [N1N2], N-term	Rb pAb	Hu, Ms	WB, IHC-P
	GTX133225	Nurr1 antibody	Rb pAb	Ms, Rat	WB
	GTX114045	Nurr1 antibody	Rb pAb	Hu	ICC/IF
	GTX111702	Transglutaminase 2 antibody [N3C3]	Rb pAb	Hu, Ms	WB, ICC/IF, IHC-P
	GTX102424	Tyrosine Hydroxylase antibody [N1C1]	Rb pAb	Hu, Ms, Rat, Zfsh	WB, ICC/IF, IHC-Fr, IHC-P, IHC-Wm
	GTX113016	Tyrosine Hydroxylase antibody	Rb pAb	Hu, Ms, Rat, Vole, Calf	WB, ICC/IF, IHC-Fr, IHC-P
	GTX10372	Tyrosine Hydroxylase antibody [185]	Ms mAb	Hu, Ms, Rat	WB, ICC/IF, IHC-Fr, IHC-P,
	GTX634481	Tyrosine Hydroxylase antibody [GT234]	Ms mAb	Ms, Rat	WB, IHC-P

朊病毒疾病

	目录号	产品名称	宿主与克隆	种属反应	应用
PrP朊蛋白	GTX101063	Prion Protein (PrP) antibody	Rb pAb	Hu, Ms	WB, IHC-P
其他相关蛋白	GTX113719	ERp57 antibody	Rb pAb	Hu, Ms, Rat	WB, ICC/IF, IHC-P
	GTX113340	Grp78 antibody	Rb pAb	Hu, Ms, Chk, Rat	WB, ICC/IF, IHC-P
	GTX102580	Grp78 antibody [N2C1], Internal	Rb pAb	Hu, Ms, Rat	WB, ICC/IF, IHC-P, IP
	GTX103232	GRP94 antibody	Rb pAb	Hu, Ms, Rat	WB, ICC/IF, IHC-P, IP
	GTX102049	Hsp40 antibody [N1C1]	Rb pAb	Hu	WB
	GTX54013	HSP40 antibody	Rb pAb	Hu, Ms	WB, ICC/IF
	GTX111069	HSC70 antibody [N2C1], Internal	Rb pAb	Hu, Ms	WB, ICC/IF, IHC-P
	GTX111150	HSC70 antibody [C1C3]	Rb pAb	Hu, Ms, Pig	WB, IHC-P
	GTX13494	Hsp90 antibody [16F1]	Rat mAb	Hu, Ms, Rat, Shp, Drosophila, Bov, Dog, Hm, Gpig, Pig, Mk, Carp, Rainbow trout	WB, ICC/IF, IHC-P, IP, EIA, IHC
	GTX109753	Hsp90 alpha antibody	Rb pAb	Hu, Ms, Rat, Nematode	WB, ICC/IF, IHC-P, IP
GTX101448	HSP90 beta antibody	Rb pAb	Hu, Ms, Rat	WB, ICC/IF, IHC-P, IP, ELISA-Ag	
GTX103322	NRF2 antibody [N2C2], Internal	Rb pAb	Hu, Ms, Rat, Bird, Allg, Plant	WB, ICC/IF, IHC, IHC-P, IP, ChIP assay	



GeneTex 独家代理

北京: 010-88594029
Hotline: 4006-800-892

深圳: 0755-26755892
www.neobioscience.com

上海: 021-34613729
market@neobioscience.com

广州: 18024516375
tech@neobioscience.com

