

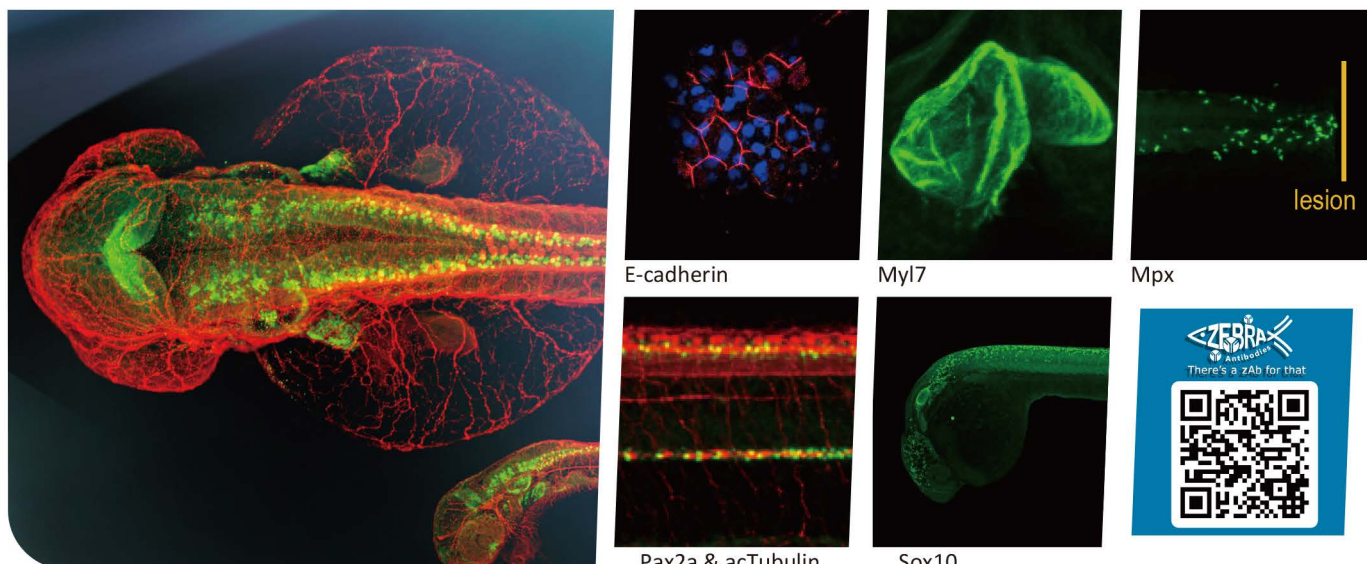
# The Leader in Zebrafish-Validated Antibodies

[www.genetex.com](http://www.genetex.com)

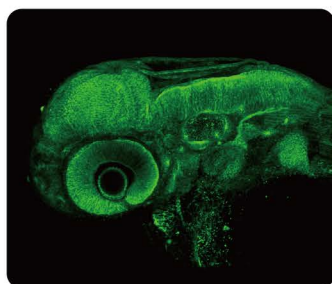
Your Expertise

Our Antibodies

Accelerated Discovery



Elavl3+4 antibody (GTX128365)



Cdh2 (N-cadherin) antibody (GTX125962)



Pax6 antibody (GTX128843)



GFAP antibody (GTX128741)

## Zebrafish

| Cat. No.  | Product Name           | Reactivity | Application               |
|-----------|------------------------|------------|---------------------------|
| GTX124484 | Acta1b antibody        | Zfsh       | WB, IHC-P, IHC-Wm, IHC    |
| GTX124302 | Aldh1a2 antibody       | Zfsh       | WB, IHC-Fr, IHC-Wm        |
| GTX124482 | Aldh2a antibody        | Zfsh       | WB, IHC-P, IHC-Wm         |
| GTX124303 | alpha Tubulin antibody | Zfsh       | WB, IHC-P, IHC-Wm, IHC    |
| GTX129736 | Atp6v1a1 antibody      | Zfsh       | IHC-Wm                    |
| GTX130820 | ATP6V1B2 antibody      | Zfsh       | WB, IHC-Wm                |
| GTX124388 | Bactin1 antibody       | Zfsh       | WB, IHC-P, IHC-Fr, IHC-Wm |
| GTX128348 | Bmp4 antibody          | Zfsh       | WB                        |
| GTX124357 | Cat antibody           | Zfsh       | WB, IHC-P                 |
| GTX133053 | Ccnd1 antibody         | Zfsh       | WB                        |
| GTX125962 | Cdh2 antibody          | Zfsh       | WB, IHC-P, IHC-Wm         |
| GTX124405 | Ckma antibody          | Zfsh       | IHC-P, IHC-Wm, IHC        |
| GTX133063 | Col1a1a antibody       | Zfsh       | WB                        |
| GTX128202 | Col1a2 antibody        | Zfsh       | WB                        |

# Zebrafish

| Cat. No.   | Product Name                                  | Reactivity                                       | Application                            |
|--|---|--|--|
| GTX127988  | Col2a1a antibody                              | Zfsh   | IHC-Wm                                 |
|  GTX124479   | Cox4i1 antibody                               | Zfsh   | WB, IHC-P, IHC-Wm                      |
|  GTX124481   | Ctnnb1 antibody                               | Zfsh   | WB, IHC-P, IHC-Wm, IHC                 |
|  GTX132244   | Cxcr4b antibody                               | Zfsh   | WB                                     |
|  GTX124387   | Cyfp2 antibody                                | Hu, Ms, Zfsh                                     | WB, IHC-P                              |
|  GTX128377   | Cyp1a antibody                                | Zfsh   | WB                                     |
| GTX128986  | Cyth1a antibody                               | Zfsh   | IHC-Wm                                 |
| GTX129001  | Dcp2 antibody                                 | Zfsh   | WB                                     |
| GTX128344  | Dlx2a antibody                                | Zfsh   | IHC-Wm                                 |
|  GTX129968   | Dvl2 antibody                                 | Zfsh   | WB, IHC                                |
| GTX129967  | Dvl3 antibody                                 | Zfsh   | IHC                                    |
|  GTX124538   | Ef1a antibody                                 | Zfsh   | WB, IHC-P                              |
| GTX128929  | Eif4a2 antibody                               | Zfsh   | IHC-Wm                                 |
|  GTX128365   | Elavl3+4 antibody                             | Zfsh   | IHC-Fr, IHC-Wm                         |
| GTX124467  | Eno1 antibody                                 | Zfsh   | WB, IHC-P, IHC-Wm                      |
| GTX128484  | Etf1 antibody                                 | Zfsh   | IHC                                    |
|  GTX124324   | Etfalpha antibody                             | Zfsh   | WB, IHC-Fr, IHC-Wm, IHC                |
| GTX128647  | Etv4 antibody                                 | Zfsh   | WB                                     |
| GTX128989  | Ezrb antibody                                 | Zfsh   | IHC-Wm                                 |
| GTX124466  | Fbl antibody                                  | Zfsh   | WB, IHC-P, IHC-Wm                      |
| GTX128304  | Flh antibody                                  | Zfsh   | IHC-Wm                                 |
| GTX128273  | Foxa2 antibody                                | Zfsh   | WB, IHC-Wm                             |
| GTX128926  | Fyna antibody                                 | Zfsh   | WB, IHC-Wm                             |
|  GTX124355  | Gad1b antibody                                | Zfsh   | WB, IHC-P, IHC-Wm                      |
|  GTX124502 | Gapdh antibody                                | Hu, Ms, Rat, Zfsh, Drosophila, Cat, Dog, E. coli | WB, ICC/IF, IHC-P                      |
|  GTX128333 | Gata1a antibody                               | Zfsh   | WB, IHC-Wm                             |
|  GTX128741 | Gfap antibody                                 | Zfsh, Fsh  | WB, ICC/IF, IHC-Fr, IHC-Wm             |
| GTX124403  | Glul antibody                                 | Zfsh   | WB, IHC-Wm                             |
| GTX124354  | Gpia antibody                                 | Zfsh   | WB, IHC-P, IHC-Fr                      |
| GTX132571  | Gsc antibody                                  | Zfsh   | IHC-Wm                                 |
| GTX128636  | Hbae1 antibody                                | Zfsh   | WB, IHC-Wm                             |
|  GTX124349 | Hdac3 antibody                                | Zfsh   | WB, IHC-P, IHC-Wm                      |
| GTX132238  | Her6 antibody                                 | Zfsh   | WB                                     |
|  GTX124425 | Hk1 antibody                                  | Zfsh, Teleost                                    | WB, IHC-P, IHC-Wm                      |
|  GTX131826 | Hif1ab antibody                               | Zfsh   | WB                                     |
|  GTX127342 | Histone H2A.XS139ph (phospho Ser139) antibody | Hu, Zfsh   | WB, ICC/IF, IHC-P, IHC-Fr, IHC-Wm, IHC |
| GTX124486  | Hmgb1 antibody                                | Zfsh   | WB, IHC-P, IHC-Wm                      |
| GTX124465  | Hnrnpab antibody                              | Zfsh   | WB, IHC-Wm                             |
| GTX128403  | Hsp70l antibody                               | Zfsh   | WB                                     |
| GTX124483  | Hsp90ab1 antibody                             | Zfsh   | WB, IHC-P, IHC-Wm                      |
|  GTX124472 | Ilk antibody                                  | Zfsh   | WB, IHC-P, IHC-Wm, IHC                 |
| GTX129970  | Inhbb antibody                                | Zfsh   | IHC-Fr, IHC                            |
|  GTX128490 | Ins antibody                                  | Zfsh   | IHC-Wm                                 |
|  GTX128201 | Isl1 antibody                                 | Zfsh   | WB, IHC-Wm                             |
| GTX131944  | Klf8 antibody                                 | Zfsh   | IHC-Wm                                 |
| GTX128002  | Krt18 antibody                                | Zfsh   | IHC-Wm                                 |
| GTX124361  | Krt8 antibody                                 | Zfsh   | WB                                     |
|  GTX124420 | Lcp1 antibody                                 | Zfsh   | IHC-P, IHC-Fr, IHC-Wm, IHC             |
|  GTX131406 | leptin b antibody                             | Zfsh   | WB                                     |
| GTX124290  | Lin7a antibody                                | Zfsh   | WB, IHC-P, IHC-Wm                      |
| GTX132379  | Lyz antibody                                  | Zfsh   | WB, IHC-Wm                             |
| GTX124289  | Mab21l antibody                               | Zfsh   | WB, IHC-P, IHC-Wm                      |

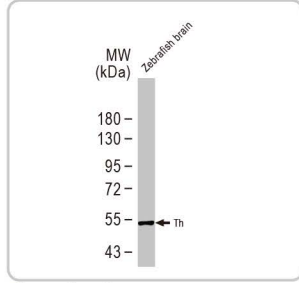
| Cat. No.   | Product Name           | Reactivity   | Application                                |
|--|------------------------|--|--|
|  GTX132692  | Mfap4 antibody         | Zfsh   | IHC-Wm                                     |
|   GTX128379     | Mpx antibody           | Zfsh, Atlantic salmon                              | IHC-P, IHC-Fr, IHC-Wm, IHC                 |
| GTX132039  | Mt1+Mt2 antibody       | Zfsh   | IHC-Wm                                     |
| GTX128851  | Mtmr2 antibody         | Zfsh   | IHC-Wm                                     |
|  GTX124771  | Mtor antibody          | Zfsh   | WB, IHC-P, IHC-Wm                          |
|  GTX128816  | Myl2 antibody          | Zfsh   | WB, IHC-Fr, IHC-Wm, IHC                    |
|  GTX128346  | Myl7 antibody          | Zfsh, Japanese Medaka                              | WB, IHC-Fr, IHC-Wm                         |
|  GTX132491  | Nanog antibody         | Zfsh   | WB   |
| GTX124288  | Nat10 antibody         | Zfsh   | WB, IHC-P                                  |
| GTX124285  | Nfyba antibody         | Zfsh   | WB, IHC-P, IHC-Wm                          |
|  GTX128357  | Nkx2.5 antibody        | Zfsh   | IHC-Wm                                     |
| GTX124295  | Nme2b.1 antibody       | Zfsh   | WB, IHC-P, IHC-Wm                          |
| GTX128699  | Olig2 antibody         | Zfsh   | WB   |
|   GTX128135     | p53 antibody           | Zfsh   | WB, IHC-P, IHC-Wm                          |
|  GTX128127  | Pax2a antibody         | Zfsh, Japanese Medaka                              | WB, IHC-Wm                                 |
|  GTX128843  | Pax6a+b antibody       | Zfsh   | IHC-Wm                                     |
| GTX128328  | Pcdh8 antibody         | Zfsh   | WB, IHC-Wm                                 |
|   GTX124496     | Pcna antibody          | Zebrafish, Japanese Medaka, Nothobranchius furzeri | WB, IHC-P, IHC-Fr, IHC-Wm, Immunostaining  |
| GTX124432  | Pdha1a antibody        | Zfsh   | WB, IHC-P, IHC-Wm                          |
| GTX132376  | Plk1 antibody          | Zfsh   | WB   |
| GTX132245  | Pou5f3 (Oct4) antibody | Zfsh   | WB   |
|  GTX128354  | Prox1 antibody         | Zfsh   | IHC-Wm                                     |
|  GTX128266   | PU.1/Spi1 antibody     | Zfsh   | WB, IHC-Wm                                 |
| GTX124464  | Rpl3 antibody          | Zfsh   | IHC-P, WB, IHC-Wm                          |
| GTX131425  | Rspo3 antibody         | Zfsh   | WB   |
|  GTX124294  | Sod2 antibody          | Zfsh   | WB, IHC-P, IHC-Wm                          |
|  GTX128374  | Sox10 antibody         | Zebrafish, Chicken, Japanese Medaka                | WB, IHC-P, IHC-Fr, IHC-Wm, IHC             |
|  GTX124477  | Sox2 antibody          | Zfsh, Japanese Medaka, Fish                        | WB, ICC/IF, IHC-P, IHC-Fr, IHC-Wm          |
|   GTX132494 | Sox3 antibody          | Zfsh   | WB, IHC-Fr, IHC-Wm, ChIP assay             |
| GTX132380  | Sox32 antibody         | Zfsh   | WB   |
| GTX133062  | Sox4a antibody         | Zfsh   | WB   |
| GTX133068  | Sox4b antibody         | Zfsh   | WB   |
| GTX128406  | Tbx16 antibody         | Zfsh   | IHC-Wm                                     |
| GTX128302  | Tbx6 antibody          | Zfsh   | IHC-Wm                                     |
| GTX128757  | Tfap2a antibody        | Zfsh   | WB   |
| GTX124360  | Th antibody            | Zfsh   | WB   |
|  GTX125869  | Thbs4b antibody        | Zfsh   | WB, IHC-Wm                                 |
|  GTX124660  | Tp63 antibody          | Zfsh, Fish   | WB, IHC-P, IHC-Fr, IHC-Wm, ChIP assay, IHC |
| GTX133007  | Trpm7 antibody         | Zfsh   | WB   |
|  GTX124965  | Tuba1 antibody         | Zfsh   | WB, IHC-P, IHC-Wm                          |
| GTX124485  | Tubb5 antibody         | Zfsh   | WB, IHC-P, IHC-Wm                          |
|  GTX124352  | Tubg1 antibody         | Zfsh   | WB, IHC-P, IHC-Fr, IHC-Wm, IHC             |
| GTX128845  | Tyms antibody          | Zfsh   | WB   |
| GTX132034  | Usp1 antibody          | Zfsh   | IHC-Wm                                     |
| GTX131403  | Usp13 antibody         | Zfsh   | WB   |
|  GTX128306  | Vasa antibody          | Zfsh, Japanese Medaka, Fish                        | WB, IHC-P, IHC-Wm, IHC                     |
|  GTX124821  | Vcp antibody           | Zfsh   | WB, IHC-P, IHC-Wm                          |
| GTX128356  | Vegfaa antibody        | Zfsh   | IHC-Wm                                     |
| GTX133061  | Vimentin antibody      | Zfsh   | WB, IHC-Wm                                 |

# Zebrafish

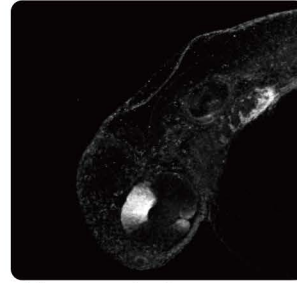
Citation Support KO/KD Validation Orthogonal Validation



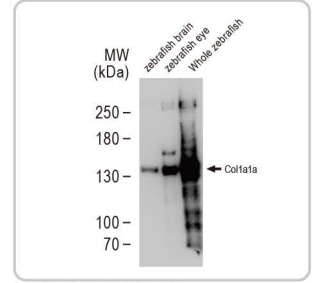
Isl1 antibody  
(GTX128201)



Th antibody  
(GTX124360)



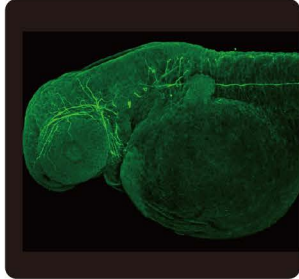
Aldh1a2 antibody  
(GTX124302)



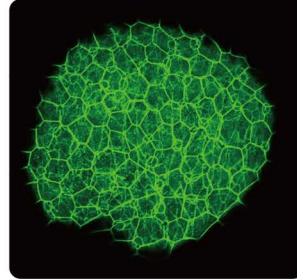
Col1a1a antibody  
(GTX133063)



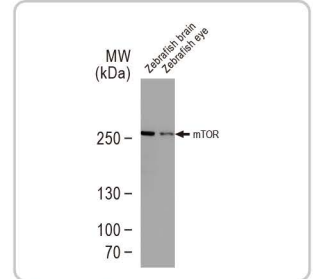
PcnA antibody  
(GTX124496)



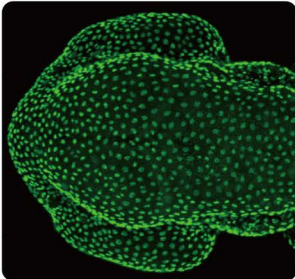
Vimentin antibody  
(GTX133061)



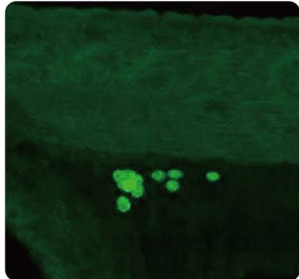
Ctnnb1 (beta-catenin)  
antibody (GTX124481)



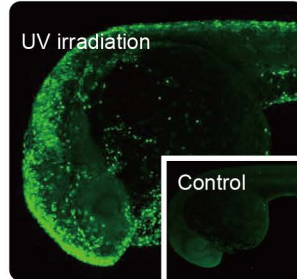
Mtor antibody  
(GTX124771)



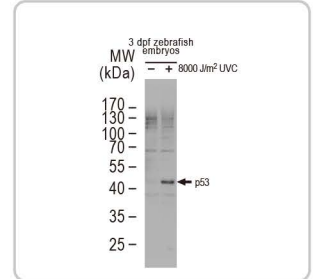
Tp63 antibody  
(GTX124660)



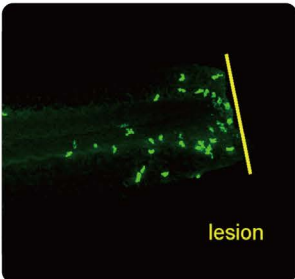
Vasa antibody  
(GTX128306)



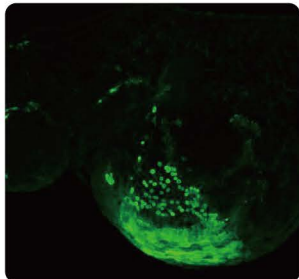
γH2A.X antibody  
(GTX127342)



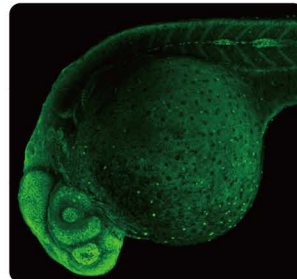
p53 antibody  
(GTX128135)



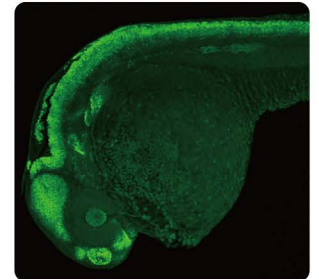
Lyz antibody  
(GTX132379)



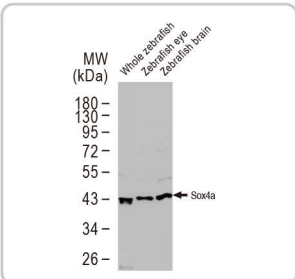
Hbae1 antibody  
(GTX128636)



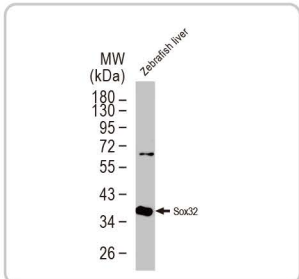
Sox2 antibody  
(GTX124477)



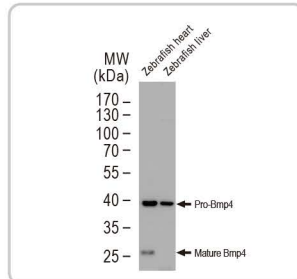
Sox3 antibody  
(GTX132494)



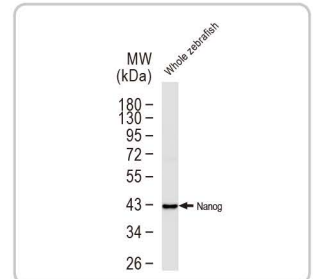
Sox4a antibody  
(GTX133062)



Sox32 antibody  
(GTX132380)



Bmp4 antibody  
(GTX128348)



Nanog antibody  
(GTX132491)



GeneTex 独家代理

北京: 010-88594029 深圳: 0755-26755892  
Hotline: 4006-800-892 www.nbs-bio.com

上海: 021-34613729 market@neobioscience.com

广州: 020-87615159 tech@neobioscience.com



www.genetex.com

PD-Z001-220415