

# 体外诊断原料

## IVD-related Products

### 高质量重组单克隆抗体

- 高度再现性
- 高度特异性
- 批次性能一致
- 可大量供应
- 国际质量体系认证
- 严格的验证和评估

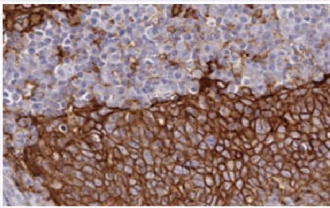


 Citation Support
  Recombinant
  KO/KD Validation
  Comparable Abs
  Orthogonal Validation
  Protein Overexpression

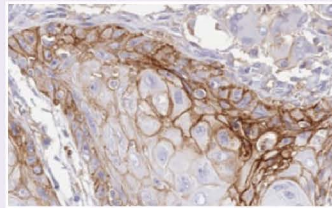
### 石蜡切片免疫组织化学染色 Immunohistochemistry Staining – Paraffin (IHC-P)

- 人类正常与相关肿瘤组织石蜡切片染色验证

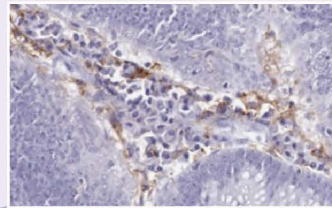
#### PD-L1 antibody [HL1041] (GTX635975)



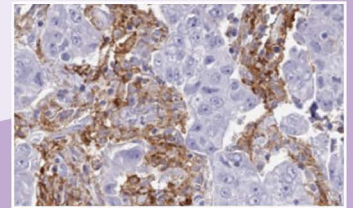
Squamous cell carcinoma (oral cavity) & PD-L1+ inflammatory cells



Squamous cell carcinoma (pharynx)

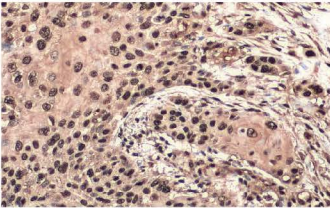


PD-L1- colorectal adenocarcinoma & PD-L1+ inflammatory cells



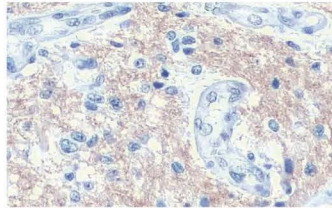
PD-L1- esophageal adenocarcinoma & PD-L1+ tumor-associated macrophages

#### 食管癌



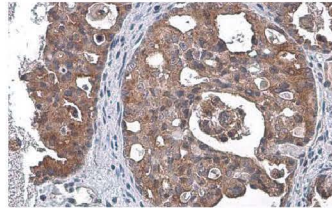
PAX3 antibody [HL160] (GTX635463)   

#### 胶质母细胞瘤



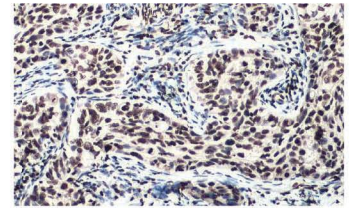
SNAP91 antibody [HL1657] (GTX637255) 

#### 卵巢癌



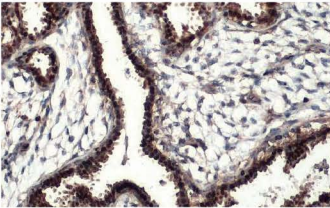
TSG101 antibody [4A10] (GTX70255)     

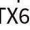

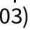
#### 子宫颈癌



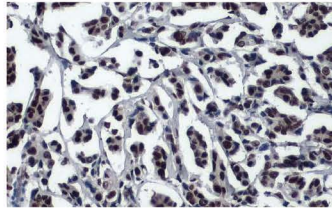
ATM (phospho Ser1981) antibody [HL1062] (GTX636086)   


#### 乳腺癌



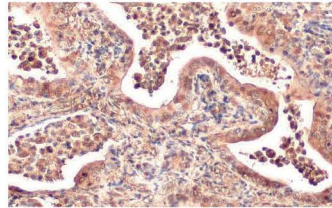
Estrogen Receptor alpha antibody [HL1082] (GTX636203)   

#### 乳腺癌



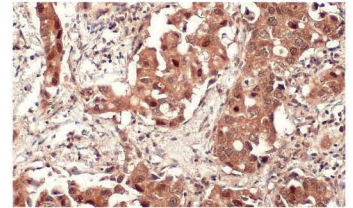
53BP1 antibody [HL275] (GTX635479)    

#### 肺癌



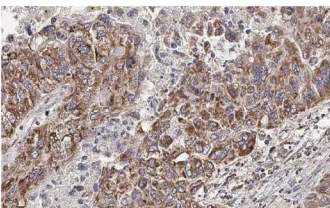
AKT1 antibody [HL1142] (GTX636413)    


#### 肺癌



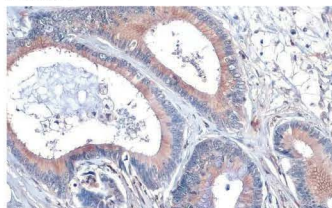
SQSTM1 / P62 antibody [HL1113] (GTX636328)    


#### 肝细胞癌



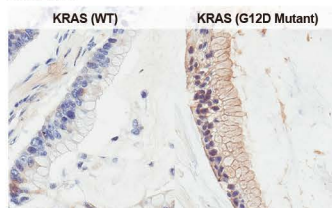
HCK antibody [HL1673] (GTX637272) 

#### 大肠癌



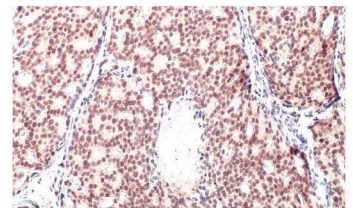
SCRIB antibody [HL1639] (GTX637220) 



#### 胰脏癌



RAS (G12D Mutant) antibody [HL10] (GTX635362)    

#### 前列腺癌



Androgen Receptor antibody [HL1049] (GTX636021)  

更多精选验证抗体与蛋白请至GeneTex官网、联系全国总代理欣博盛生物或当地省级代理商







## 酶联免疫吸附试验 Enzyme-linked Immunosorbent Assay (ELISA)

### 夹心ELISA

|           | ANP                               | Enterovirus D68 VP1                                | IL6                               | Tau (p Thr181)                                     |
|-----------|-----------------------------------|----------------------------------------------------|-----------------------------------|----------------------------------------------------|
|           |                                   |                                                    |                                   |                                                    |
| Capture   | ANP antibody [GT1068] (GTX634219) | Enterovirus D68 VP1 antibody [GT11610] (GTX633688) | IL6 antibody [GT1535] (GTX636571) | Tau (phospho Thr181) antibody [HL2497] (GTX638855) |
| Detection | ANP antibody [HL2617] (GTX639071) | Enterovirus D68 VP1 antibody [HL1997] (GTX637898)  | IL6 antibody [HL2389] (GTX638598) | Tau (phospho Thr181) antibody [HL2498] (GTX638856) |

### 间接ELISA

|         | Apolipoprotein B                               | EPO                               | IL18                               | Pepsinogen I                               |
|---------|------------------------------------------------|-----------------------------------|------------------------------------|--------------------------------------------|
|         |                                                |                                   |                                    |                                            |
| Capture | Apolipoprotein B antibody [HL1962] (GTX637799) | EPO antibody [HL1794] (GTX637446) | IL18 antibody [HL1859] (GTX637584) | Pepsinogen I antibody [HL2137] (GTX638109) |

## 侧向层析检测 Lateral Flow Assay (LFA)



|           | Influenza A Virus (Flu A)<br>H1N1 H3N2 N                                                    | Influenza B Virus (Flu B)<br>VIC SYD N                                                            | Respiratory Syncytial Virus (RSV)<br>RSV A RSV B N                                      | Human Papillomavirus type 16 (HPV 16)<br>HPV16 HPV18 N                        | Enterovirus D68<br>EVD68 N                                        |
|-----------|---------------------------------------------------------------------------------------------|---------------------------------------------------------------------------------------------------|-----------------------------------------------------------------------------------------|-------------------------------------------------------------------------------|-------------------------------------------------------------------|
|           |                                                                                             |                                                                                                   |                                                                                         |                                                                               |                                                                   |
| Capture   | Flu A NP antibody [HL1078] (GTX636199)                                                      | Flu B NP antibody [HL1069] (GTX636100)                                                            | RSV NP antibody [HL1248] (GTX636650)                                                    | HPV type 16 E7 antibody [HL1647] (GTX637228)                                  | Enterovirus D68 VP1 antibody [HL1997] (GTX637898)                 |
| Detection | Flu A NP antibody [HL1953] (GTX637790)                                                      | Flu B NP antibody [HL1068] (GTX636099)                                                            | RSV NP antibody [HL1246] (GTX636648)                                                    | HPV type 16 E7 antibody [HL1821] (GTX637546)                                  | Enterovirus D68 VP1 antibody [GT1843] (GTX633770)                 |
| Samples   | 1. Flu A NP (H1N1) (GTX135904-pro)<br>2. Flu A NP (H3N2) (GTX136317-pro)<br>3. Lysis buffer | 1. Flu B NP (B/Victoria/02/1987) (GTX136277-pro)<br>2. Flu B NP (B/Sydney/3/2004) (GTX135867-pro) | 1. RSV type A NP (GTX136751-pro)<br>2. RSV type B NP (GTX136931-pro)<br>3. Lysis buffer | 1. HPV16 E7 (GTX133411-pro)<br>2. HPV18 E7 (GTX133412-pro)<br>3. Lysis buffer | 1. Enterovirus D68 VP1 protein (GTX138561-pro)<br>2. Lysis buffer |

更多精选验证抗体与蛋白请至GeneTex官网、联系全国总代理欣博盛生物或当地省级代理商

PD-I008-240111