

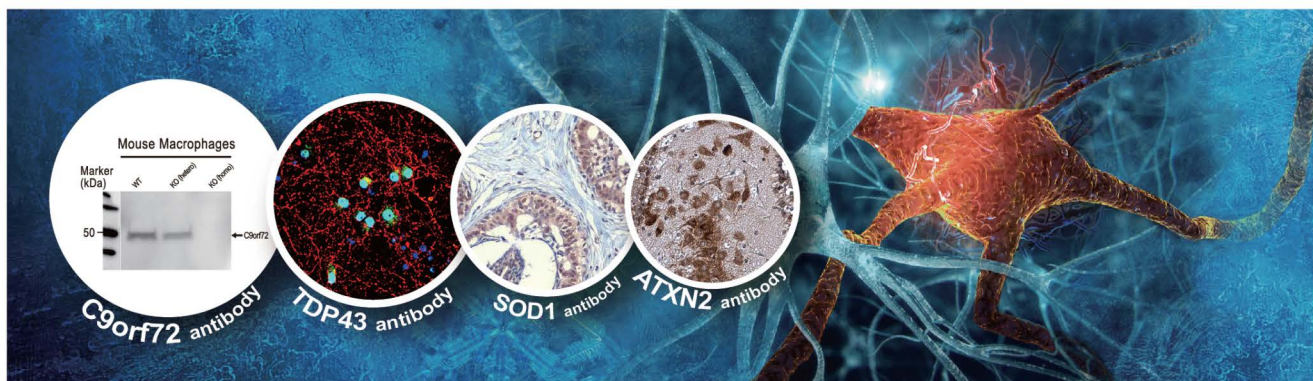
# Amyotrophic Lateral Sclerosis

Your Expertise

Our Antibodies

Accelerated Discovery

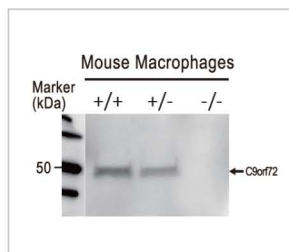
[www.genetex.com](http://www.genetex.com)





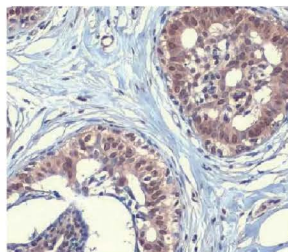
Amyotrophic lateral sclerosis (ALS) is an invariably fatal adult-onset neurodegenerative disorder characterized by the progressive loss of both upper and lower motor neurons. The major clinical presentation of ALS is muscle weakness and atrophy affecting speech, swallowing, and movement, with respiratory failure being the most common reason for death usually within 3-5 years of diagnosis. Though the cause is unknown, recent studies have identified several genes associated with the disease including *SOD1*, *TARDBP*, *FUS*, *C9orf72*, *C21orf2*, and most recently *NEK1*.


GeneTex is proud to offer exceptional antibodies against these targets relevant to ALS. Please see the examples highlighted below and the accompanying table to find the reagent that facilitates your ALS research.

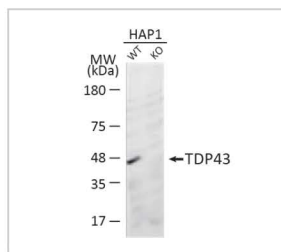
## Highlighted Products




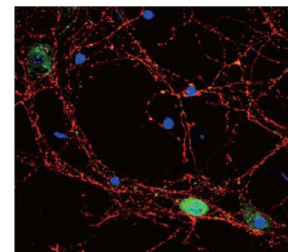
C9orf72 antibody  
(GTX632041)  





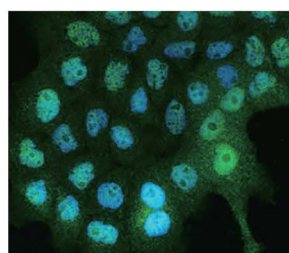
SOD1 antibody [HL1652]  
(GTX637250) 




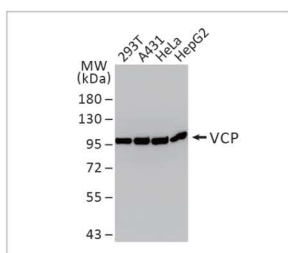
TDP43 antibody [GT733]  
(GTX630197) 






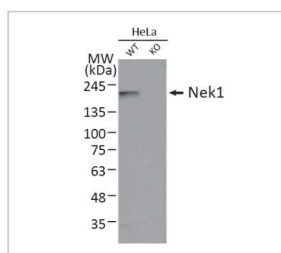
VAPB antibody  
(GTX131631)  






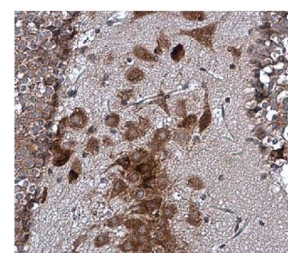
C21orf2 antibody [N1C2]  
(GTX119046) 





VCP antibody  
(GTX101089)   



Nek1 antibody  
(GTX130828)   



ATXN2 antibody  
(GTX130329)  

 Recombinant  Citation Support  KO/KD Validation  Orthogonal Validation  Protein Overexpression

# Highlighted Products

| Cat. No.  | Product Name   | Clonality  | Reactivity  | Applications                             |
|-----------|--|------------|---|--|
| GTX130329 | ATXN2 antibody                                       | Rb pAb     | Hu,Ms   | WB, IHC-P, IP                            |
| GTX119046 | C21orf2 antibody [N1C2]                              | Rb pAb     | Hu  | WB, ICC/IF, IHC-P                        |
| GTX634482 | C9orf72 antibody [GT1553]                            | Ms mAb     | Hu,Ms   | WB, IHC-P                                |
| GTX635398 | C9orf72 antibody [GT1553-RB]                         | Rec Rb mAb | Hu,Ms,Rat   | WB, ICC/IF                               |
| GTX632041 | C9orf72 antibody [GT779]                             | Ms mAb     | Hu,Ms,Rat   | WB, ICC/IF, IHC-P, IP                    |
| GTX635397 | C9orf72 antibody [GT779-RB]                          | Rec Rb mAb | Hu,Ms,Rat   | WB, ICC/IF, IHC-P                        |
| GTX100231 | DCTN1 antibody [C3], C-term                          | Rb pAb     | Hu,Ms,Rat   | WB, ICC/IF, IHC-P                        |
| GTX110048 | FIG4 antibody  | Rb pAb     | Hu  | WB, ICC/IF, IHC-P                        |
| GTX113486 | Galectin 3 antibody                                  | Rb pAb     | Hu,Rat,Dog  | WB, ICC/IF, IHC-P, ELISA, Sandwich ELISA |
| GTX125897 | Galectin 3 antibody                                  | Rb pAb     | Hu,Ms,Rat   | WB, IHC-P, IHC-Fr, ELISA, Sandwich ELISA |
| GTX635155 | Galectin 3 antibody [GT12712]                        | Ms mAb     | Hu  | WB, ICC/IF, IHC-P, ELISA, Sandwich ELISA |
| GTX114078 | Gelsolin antibody                                    | Rb pAb     | Hu,Ms,Rat   | WB, ICC/IF, IHC-P, IP                    |
| GTX101185 | Gelsolin antibody [C2C3], C-term                     | Rb pAb     | Hu,Ms,Rat   | WB, ICC/IF, IHC-P                        |
| GTX633690 | Gelsolin antibody [GT1656]                           | Ms mAb     | Hu,Ms,Rat   | WB, IHC-P                                |
| GTX130498 | Gemin 5 antibody                                     | Rb pAb     | Hu,Ms   | WB, ICC/IF, IHC-P, IP                    |
| GTX101277 | HMGB1 antibody                                       | Rb pAb     | Hu,Ms,Rat,Pig   | WB, ICC/IF, IHC-P, IHC                   |
| GTX127344 | HMGB1 antibody                                       | Rb pAb     | Hu,Ms,Rat   | WB, ICC/IF, IHC-P, IHC-Fr, IP            |
| GTX629445 | HMGB1 antibody [GT427]                               | Ms mAb     | Hu,Ms,Rat   | WB, ICC/IF, IHC-Fr                       |
| GTX628834 | HMGB1 antibody [GT383]                               | Ms mAb     | Hu,Ms,Rat   | WB, ICC/IF, IHC-P, IHC-Fr                |
| GTX101144 | HSC70 antibody                                       | Rb pAb     | Hu,Ms,Rat   | WB, ICC/IF, IHC-P                        |
| GTX111069 | HSC70 antibody [N2C1], Internal                      | Rb pAb     | Hu,Ms   | WB, ICC/IF, IHC-P                        |
| GTX635461 | Sodium/Potassium ATPase alpha 1 antibody [HL114]     | Rec Rb mAb | Hu,Ms,Rat   | WB, ICC/IF, IHC-P                        |
| GTX30202  | Sodium/Potassium ATPase alpha 1 antibody [464.6(6H)] | Ms mAb     | Hu,Ms,Rat,Yeast,Rb,Dm,Bov, Dog,Gpig,Pig,Xenopus,Primate | WB, ICC/IF, IHC-P, IHC-Fr, IP            |
| GTX130828 | Nek1 antibody  | Rb pAb     | Hu,Ms   | WB, ICC/IF, IP                           |
| GTX105447 | Optineurin antibody                                  | Rb pAb     | Hu  | WB, ICC/IF, IHC-P, IP                    |
| GTX132575 | Optineurin antibody                                  | Rb pAb     | Hu,Ms   | WB, ICC/IF, IHC-P, IP                    |
| GTX102005 | Peripherin antibody                                  | Rb pAb     | Hu  | WB, ICC/IF, IHC-P                        |
| GTX120605 | SCFD1 antibody [N2C1], Internal                      | Rb pAb     | Hu  | WB, IHC-P                                |
| GTX101047 | SMN1 antibody  | Rb pAb     | Hu  | WB, ICC/IF                               |
| GTX118263 | SMNDC1 antibody [N1C3-2]                             | Rb pAb     | Hu,Ms   | WB, ICC/IF, IHC-P                        |
| GTX100554 | SOD1 antibody  | Rb pAb     | Hu,Ms,Rat,Allg,Bird                                     | WB, IHC-P, ELISA, Sandwich ELISA         |
| GTX100659 | SOD1 antibody  | Rb pAb     | Hu,Ms,Rat   | WB, IHC-Fr                               |
| GTX637250 | SOD1 antibody [HL1652]                               | Rec Rb mAb | Rat   | IHC-P                                    |
| GTX100685 | SQSTM1 / P62 antibody [N3C1], Internal               | Rb pAb     | Hu,Ms,Rat,Bov,Honeybee,Mosq                             | WB, ICC/IF, IHC-P, FACS, IP, PLA         |
| GTX636328 | SQSTM1 / P62 antibody [HL1113]                       | Rec Rb mAb | Hu,Ms,Rat   | WB, ICC/IF, IHC-P                        |
| GTX629890 | SQSTM1 / P62 antibody [GT1478]                       | Ms mAb     | Hu,Ms,Rat   | WB, ICC/IF, IHC-Fr, FACS                 |
| GTX134001 | SQSTM1 / P62 (phospho Ser349) antibody               | Rb pAb     | Hu  | WB                                       |
| GTX128171 | SQSTM1 / P62 (phospho Ser403) antibody               | Rb pAb     | Hu,Ms,Rat   | WB, ICC/IF, IHC-P, FACS, IHC             |
| GTX114210 | TDP43 antibody                                       | Rb pAb     | Hu,Ms,Rat   | WB, ICC/IF, IHC-P, IP, ChIP-seq, RIP     |
| GTX630197 | TDP43 antibody [GT733]                               | Ms mAb     | Hu,Ms,Rat   | WB, ICC/IF, IHC-P                        |
| GTX101089 | VCP antibody   | Rb pAb     | Hu,Ms,Rat   | WB, ICC/IF, IHC-P, IHC-Fr, IP            |
| GTX113030 | VCP antibody [N1N2], N-term                          | Rb pAb     | Hu,Ms,Rat,Dog   | WB, ICC/IF, IHC-P, IP                    |

Recombinant 
 Citation Support 
 KO/KD Validation 
 Comparable Abs 
 Orthogonal Validation 
 Protein Overexpression



GeneTex

International  
USA

Tel: 886.3.6208988  
Tel: 1.949.553.1900

Toll-free: 1.877.436.3839

www.genetex.com

PD - A006 - 220907