

细胞生物学抗体

Your Expertise

Our Antibodies

Accelerated Discovery



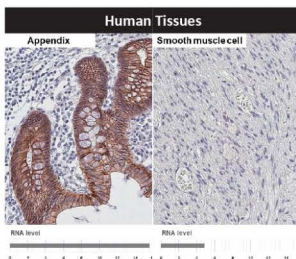
更多产品信息

8个领域

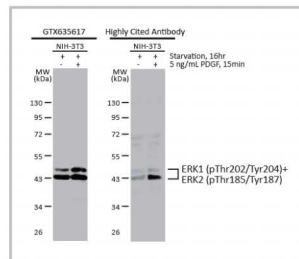
- 细胞周期
- 细胞自噬
- 细胞死亡
- 细胞坏死
- 细胞凋亡
- 细胞器标记
- 细胞焦亡
- 细胞粘附与迁移

热门研究抗体

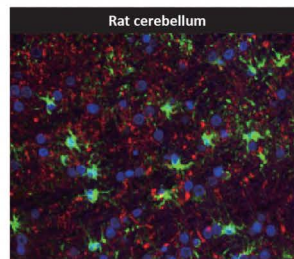
R 重组抗体
 C 文献支持
 K 基因敲除/敲弱
 A 比较抗体策略
 B 生物特性与正交策略
 E 蛋白表达策略



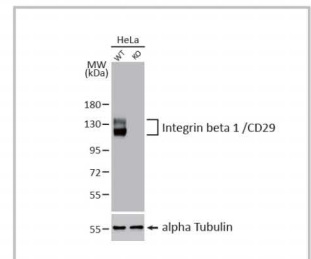
E-Cadherin antibody [HL1229] (GTX636577) CRKAB



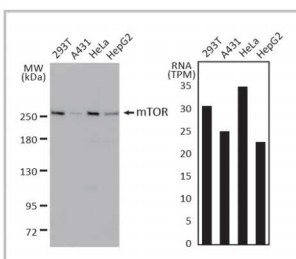
ERK1 (phospho Thr202/Tyr204) + ERK2 (phospho Thr185/Tyr187) antibody [HL173] (GTX635617) CRKAB



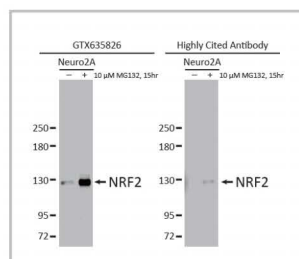
IL1 beta antibody (GTX74034) CB



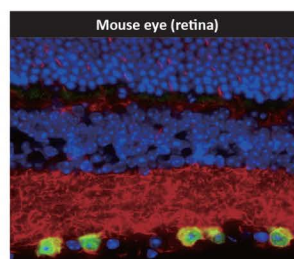
Integrin beta 1 / CD29 antibody [HL1255] (GTX636657) CRKABE



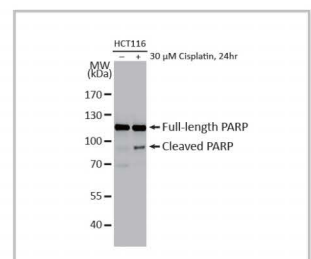
mTOR antibody [HL2216] (GTX638220) CRKAB



NRF2 antibody [HL1021] (GTX635826) CRABE

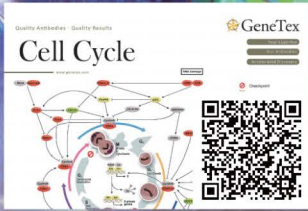


RBPM5 antibody [HL3090] (GTX640536) R



PARP antibody [HL1365] (GTX636805) RKABE

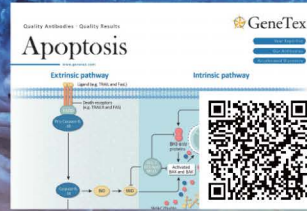
细胞科学精选单页



细胞周期



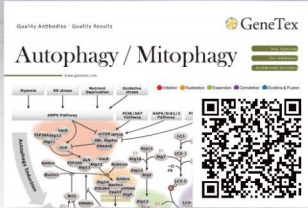
细胞死亡



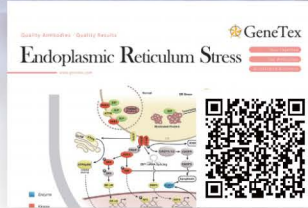
细胞凋亡



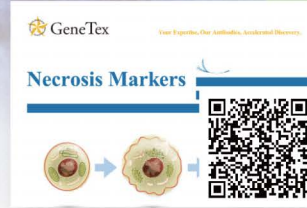
细胞焦亡



细胞自噬



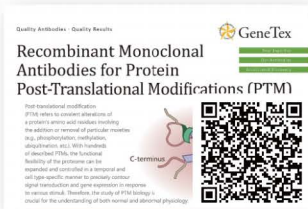
内质网应激



细胞坏死



RNA 结合蛋白



转译后修饰



DNA损伤与修复



线粒体

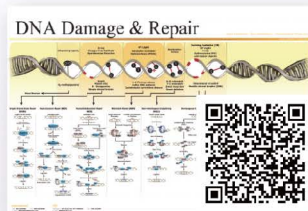


外泌体和微泡标记

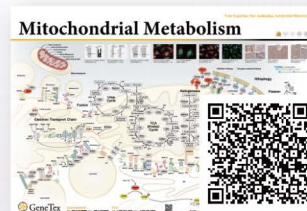
细胞科学精选挂图



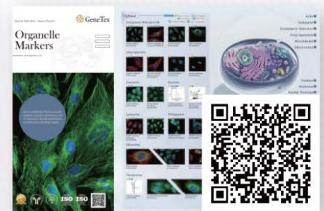
细胞器标记



DNA损伤与修复



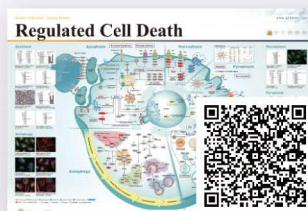
线粒体代谢



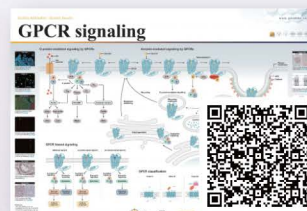
细胞器标记



外泌体和微泡标记



调节细胞死亡



GPCR 信号转导



Featured Antibody Reagents from GeneTex

细胞科学精选折页



GeneTex 独家代理

北京: 010-88594029
Hotline: 4006-800-892

深圳: 0755-26755892
www.nbs-bio.com

上海: 021-34613729
market@neobioscience.com

广州: 020-87615159
tech@neobioscience.com