

神经科研抗体

Your Expertise

Our Antibodies

Accelerated Discovery



Since 1997 USA



完整收录

>8,000个神经科研抗体



更多产品信息

3大方向

- 神经标记
- 神经轴突和突触
- 神经退行性疾病

8个领域

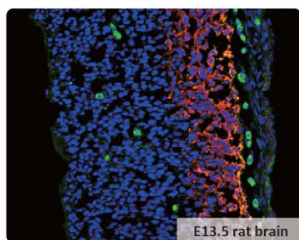
- 神经传递
- 感觉
- 神经轴突和突触
- 生物钟
- 神经标记
- 神经炎症
- 神经学疾病
- 离子通道

GeneTex神经科研抗体的优势

- 通过原代培养神经元的ICC/IF染色验证
- 通过神经组织的IHC验证
- 多种宿主来源抗体,可搭配样品物种进行共同染色
- 5大策略验证抗体和文献支持

热门研究抗体

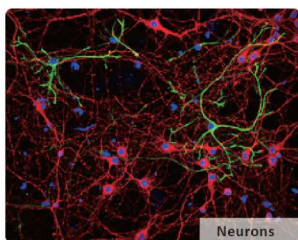
 重组抗体
  文献支持
  基因敲除/敲弱
  比较抗体策略
  免疫捕获及质谱分析
  生物特性与正交策略
  蛋白表达策略



E13.5 rat brain

Green: Vimentin (GTX629744)

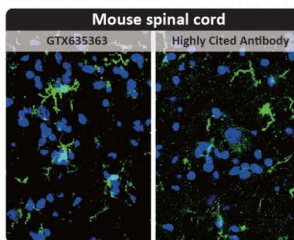
Red: Tuj1 (GTX130245)



Neurons

Green: GFAP (GTX108711)

Red: Tuj1 (GTX631836)



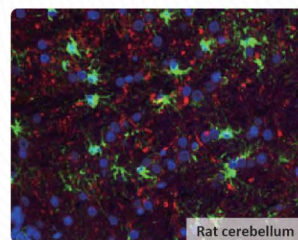
Mouse spinal cord

GTX635363

Highly Cited Antibody

Iba1 antibody (GTX635363)

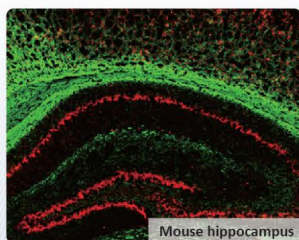
Highly Cited Antibody



Rat cerebellum

Green: IL1 beta (GTX74034)

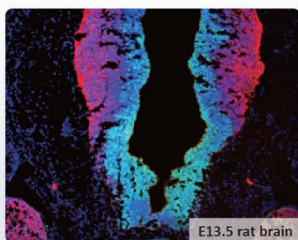
Red: NF-H (GTX634289)



Mouse hippocampus

Green: Myelin basic protein (GTX133108)

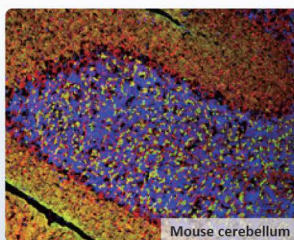
Red: NeuN antibody (GTX30773)



E13.5 rat brain

Green: SOX2 (GTX101507)

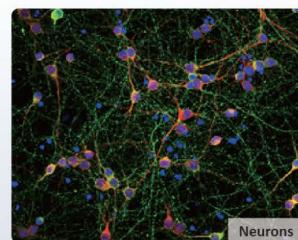
Red: Tuj1 (GTX631836)



Mouse cerebellum

Green: alpha Synuclein (GTX112799)

Red: Tuj1 (GTX631836)



Neurons

Green: Tau (GTX130462)

Red: MAP2 (GTX11267)

神经科学精选挂图单页

Quality Antibodies - Quality Results

神经标记物

GeneTex

单页 - 神经标记物

Quality Antibodies - Quality Results

神经递质

GeneTex

单页 - 神经递质

Quality Antibodies - Quality Results

神经退行性疾病

GeneTex

单页 - 神经退行性疾病

Quality Antibodies - Quality Results

Neuroinflammation

GeneTex

单页 - 神经炎症

Quality Antibodies - Quality Results

Neuropeptides

Neuropeptides are small polypeptides (1-50 residues) which are generally packaged in large dense core vesicles (LDCV) that can be targeted to both axons and dendrites. They are key signaling factors involved in neurotransmission through functional interaction with neurotransmitters, neurotransceptors, neuropeptide receptors.

GeneTex

单页 - 神经肽

Quality Antibodies - Quality Results

Vision and Retina

GeneTex

单页 - 视觉与视网膜

Quality Antibodies - Quality Results

Neurites and Synapses

GeneTex

单页 - 神经轴突和突触

Quality Antibodies - Quality Results

生物钟

GeneTex

单页 - 生物钟

Quality Antibodies - Quality Results

Ion Channels

GeneTex

单页 - 离子通道

Quality Antibodies - Quality Results

Amyotrophic Lateral Sclerosis

Amyotrophic lateral sclerosis (ALS) is an invariably fatal adult-onset neurodegenerative disease of both upper and lower motor neurons. The major clinical and anatomic findings are progressive weakness, atrophy, and paralysis of skeletal muscles, usually within 5-6 years of diagnosis. Though histologic evidence is associated with the disease including SOD1, TARDBP, FUS, C9orf72, C21orf19.

GeneTex

单页 - 肌萎缩侧索硬化症

Quality Antibodies - Quality Results

Neural Markers

GeneTex

挂图 - 神经元标记

Quality Antibodies - Quality Results

Neurodegenerative Disorders

GeneTex

挂图 - 神经退行性疾病

折页 - 神经研究领域



Quality Antibodies - Quality Results

Neuroscience Research

GeneTex



GeneTex 独家代理

北京: 010-88594029
Hotline: 4006-800-892

深圳: 0755-26755892
www.nbs-bio.com

上海: 021-34613729
market@neobioscience.com

广州: 020-87615159
tech@neobioscience.com